



**EURLEY**

**DEĐIŐTİRİLEBİLİR TUNGSTEN  
KARBÜR FREZE**

**INTERCHANGEABLE TUNGSTEN CARBIDE MILLING**



**2022/10-1**



## 4 AĞIZLI DÜZ KARBÜR FREZE FLUTES SQUARE CARBIDE MILLING



### T-S4Z



Çap(Diameter) ØD	Kesme Boyu (Flute Length)	Boyun Çapı (Neck Dia) Ød	Tam Boy (O.A.L)	Diş Ölçüsü (Thread Size) M	EUROLOY KOD EUROLOY CODE
8,0	8,0	7,8	12,1	M4/M5	T-S4Z0804
10,0	10,0	9,8	16,1	M5/M7	T-S4Z1004
12,0	12,0	11,7	20,3	M6/M8	T-S4Z1204
16,0	16,0	15,6	26,2	M8/M10	T-S4Z1604
20,0	20,0	19,5	31,1	M10/M12	T-S4Z-2004
25,0	25,0	24,4	39,3	M12/M16	T-S4Z2504
32,0	32,0	31,2	48,0	M16/M20	T-S4Z3204

## 6 AĞIZLI DÜZ KARBÜR FREZE 6 FLUTES SQUARE CARBIDE MILLING



### T-S6Z



Çap(Diameter) ØD	Kesme Boyu (Flute Length)	Boyun Çapı (Neck Dia) Ød	Tam Boy (O.A.L)	Diş Ölçüsü (Thread Size) M	EUROLOY KOD EUROLOY CODE
8,0	8,0	7,8	12,1	M4/M5	T-S6Z0806
10,0	10,0	9,8	16,1	M5/M7	T-S6Z1006
12,0	12,0	11,7	20,3	M6/M8	T-S6Z1206
16,0	16,0	15,6	26,2	M8/M10	T-S6Z1606
20,0	20,0	19,5	31,1	M10/M12	T-S6Z2006
25,0	25,0	24,4	39,3	M12/M16	T-S6Z2506
32,0	32,0	31,2	48,0	M16/M20	T-S6Z3206

## 4 AĞIZLI DÜZ KARBÜR FREZE 4 FLUTES SQUARE CARBIDE MILLING



Çap(Diameter) ØD	Kesme Boyu (Flute Length)	Boyun Çapı (Neck Dia) Ød	Tam Boy (O.A.L)	Diş Ölçüsü (Thread Size) M	EUROLOY KOD EUROLOY CODE
8,0	8,5	7,8	12,1	M4/M5	T-H4Z0804
10,0	10,0	9,8	16,1	M5/M7	T-H4Z1004
12,0	12,0	11,7	20,3	M6/M8	T-H4Z1204
16,0	16,0	15,6	26,2	M8/M10	T-H4Z1604
20,0	20,0	19,5	31,1	M10/M12	T-H4Z2004
25,0	25,0	24,4	39,3	M12/M16	T-H4Z2504
32,0	32,0	31,2	48,0	M16/M20	T-H4Z3204

## 4 AĞIZLI DÜZ KARBÜR KÜRE FREZE 4 FLUTES BALL NOSE CARBIDE MILLING



Çap(Diameter) ØD	Kesme Boyu (Flute Length)	Boyun Çapı (Neck Dia) Ød	Tam Boy (O.A.L)	Diş Ölçüsü (Thread Size) M	EUROLOY KOD EUROLOY CODE
R4,0	8,5	7,8	12,1	M4/M5	T-BZ40804
R5,0	10,0	9,8	16,1	M5/M7	T-BZ41004
R6,0	12,0	11,7	20,3	M6/M8	T-BZ41204
R8,0	16,0	15,6	26,2	M8/M10	T-BZ41604
R10,0	20,0	19,5	31,1	M10/M12	T-BZ42004
R12,5	25,0	24,4	39,3	M12/M16	T-BZ42504

## 2 AĞIZLI KARBÜR KÜRE FREZE 2 FLUTES BALL NOSE CARBIDE MILLING



### T-B2Z



Çap(Diameter) ØD	Kesme Boyu (Flute Length)	Boyun Çapı (Neck Dia) Ød	Tam Boy (O.A.L)	Diş Ölçüsü (Thread Size) M	Tornavida Tip No (Screw Driver Type No)	EUROLOY KOD EUROLOY CODE
R4,0	8,5	7,8	12,1	M4/M5	K08	T-B2Z0802
R5,0	10,0	9,8	16,1	M5/M7	K10	T-B2Z1002
R6,0	12,0	11,7	20,3	M6/M8	K12	T-B2Z1202
R8,0	16,0	15,6	26,2	M8/M10	K16	T-B2Z1602
R10,0	20,0	19,5	31,1	M10/M12	K20	T-B2Z2002
R12,5	25,0	24,4	39,3	M12/M16	K25	T-B2Z2502
32,0	32,0	31,2	48,0	M16/M20	K32	T-B2Z3204

## 2 AĞIZLI KARBÜR KÜRE FREZE İÇİN DEMİR DİŞİ METALLER 2 FLUTES BALL NOSE CARBIDE MILLING FOR GRASS AND ALUMINUM



### T-B2ZA



Çap(Diameter) ØD	Kesme Boyu (Flute Length)	Boyun Çapı (Neck Dia) Ød	Tam Boy (O.A.L)	Diş Ölçüsü (Thread Size) M	Tornavida Tip No (Screw Driver Type No)	EUROLOY KOD EUROLOY CODE
R4,0	8,5	7,8	12,1	M4/M5	K08	T-B2ZA0802
R5,0	10,0	9,8	16,1	M5/M7	K10	T-B2ZA1002
R6,0	12,0	11,7	20,3	M6/M8	K12	T-B2ZA1202
R8,0	16,0	15,6	26,2	M8/M10	K16	T-B2ZA1602
R10,0	20,0	19,5	31,1	M10/M12	K20	T-B2ZA2002
R12,5	25,0	24,4	39,3	M12/M16	K25	T-B2ZA2502
R16,0	32,0	31,2	48,0	M16/M20	K32	T-B2ZA3202

# DEĞİŞTİRİLEBİLİR TUNGSTEN KARBÜR FREZE

## INTERCHANGEABLE TUNGSTEN CARBIDE MILLING



## 4 AĞIZLI KÖŞE RADYUSLU KARBÜR FREZE

### 4 FLUTES CORNER RADIUS CARBIDE MILLING

0.2  
µm



HRc  
65



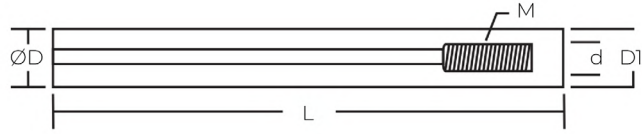
### T-S4ZR



Çap(Diameter) ØD	Kesme Boyu (Flute Length)	Boyun Çapı (Neck Dia) Ød	Tam Boy (O.A.L)	Diş Ölçüsü (Thread Size) M	Tornavida Tip No (Screw Driver Type No)	EUROLOY KOD EUROLOY CODE
8,0	8,0	0,3	12,1	M4/M5	K08	T-S4ZR0803
8,0	8,0	0,5	12,1	M4/M5	K08	T-S4ZR0805
8,0	8,0	1,0	12,1	M4/M5	K08	T-S4ZR0810
10,0	10,0	9,8	16,1	M5/M7	K10	T-S4ZR1005
10,0	10,0	9,8	16,1	M5/M7	K10	T-S4ZR1010
12,0	12,0	11,7	20,3	M6/M8	K12	T-S4ZR1205
12,0	12,0	11,7	20,3	M6/M8	K12	T-S4ZR1210
12,0	12,0	11,7	20,3	M6/M8	K12	T-S4ZR1220
16,0	16,0	15,6	26,2	M8/M10	K16	T-S4ZR1610
16,0	16,0	15,6	26,2	M8/M10	K16	T-S4ZR1620
16,0	16,0	15,6	26,2	M8/M10	K16	T-S4ZR1630
20,0	20,0	19,5	31,1	M10/M12	K20	T-S4ZR2010
20,0	20,0	19,5	31,1	M10/M12	K20	T-S4ZR2020
20,0	20,0	19,5	31,1	M10/M12	K20	T-S4ZR2030
25,0	25,0	24,4	39,3	M12/M16	K25	T-S4ZR2510
25,0	25,0	24,4	39,3	M12/M16	K25	T-S4ZR2530
25,0	25,0	24,4	39,3	M12/M16	K25	T-S4ZR2550
32,0	32,0	31,2	48,0	M16/M20	K32	T-S4ZR3230
32,0	32,0	31,2	48,0	M16/M20	K32	T-S4ZR3250

# ANTİ VİBRASYON FREZELEME AVS TAKIMLARI

## ANTI-VIBRATION CARBIDE MILLING AVS SERIES



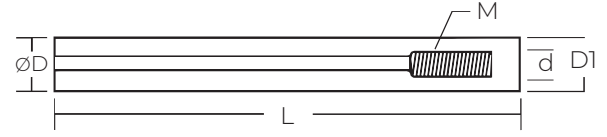
⊥ 0.005MM

⊙ 0.005MM

○ 0.005MM

BİRİM: MM  
(UNIT)

ØD (mm)	L (mm)	D1 (mm)	M	EUROLOY KOD EUROLOY CODE
8	100	8	M4	AVS-08-100-M4
10	100	10	M5/M6	AVS-10-100-M5/M6
10	150	10	M5/M6	AVS-10-150-M5/M6
12	100	12	M6	AVS-12-100-M6
12	150	12	M6	AVS-12-150-M6
12	200	12	M8	AVS-12-200-M6
15	100	15	M8	AVS-15-100-M8
15	150	15	M8	AVS-15-150-M8
15	200	15	M8	AVS-15-200-M8
15,6	150	15,6	M8	AVS-15.6-150-M8
15,6	200	15,6	M8	AVS-15.6-200-M8
15,6	250	15,6	M8	AVS-15.6-250-M8
16	100	16	M8	AVS-16-100-M8
16	150	16	M8	AVS-16-150-M8
16	200	16	M8	AVS-16-200-M8
16	250	16	M8	AVS-16-250-M8
16	300	16	M8	AVS-16-300-M8
19	150	19	M10	AVS-19-150-M10
19	200	19	M10	AVS-19-200-M10
19	250	19	M10	AVS-19-250-M10
20	100	20	M10	AVS-20-100-M10
20	150	20	M10	AVS-20-150-M10
20	200	20	M10	AVS-20-200-M10
20	250	20	M10	AVS-20-250-M10
20	300	20	M10	AVS-20-300-M10



⊥ 0.005MM

⊙ 0.005MM

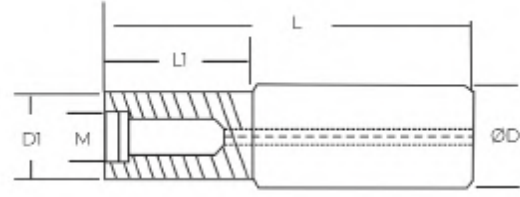
○ 0.005MM

BİRİM: MM  
(UNIT)

ØD (mm)	L (mm)	D1 (mm)	M	EUROLOY KOD EUROLOY CODE
24	150	24	M12	AVS-24-150-M12
24	200	24	M12	AVS-24-200-M12
24	250	24	M12	AVS-24-250-M12
24	300	24	M12	AVS-24-300-M12
25	100	25	M12	AVS-25-100-M12
25	150	25	M12	AVS-25-150-M12
25	200	25	M12	AVS-25-200-M12
25	250	25	M12	AVS-25-250-M12
25	300	25	M12	AVS-25-300-M12
25	350	25	M12	AVS-25-350-M12
30	150	30	M16	AVS-30-150-M16
30	200	30	M16	AVS-30-200-M16
30	300	30	M16	AVS-30-300-M16
30	350	30	M16	AVS-30-350-M16
30	400	30	M16	AVS-30-400-M16
32	150	32	M16	AVS-32-150-M16
32	200	32	M16	AVS-32-200-M16
32	250	32	M16	AVS-32-250-M16
32	300	32	M16	AVS-32-300-M16
32	350	32	M16	AVS-32-350-M16
32	400	32	M16	AVS-32-400-M16
40	300	40	M16/M20	AVS-40-300-M16/M20
40	350	40	M16/M20	AVS-40-350-M16/M20
40	400	40	M16/M20	AVS-40-400-M16/M20
42	200	42	M16/M20	AVS-42-200-M16/M20
42	250	42	M16/M20	AVS-42-250-M16/M20
42	300	42	M16/M20	AVS-42-300-M16/M20
42	350	42	M16/M20	AVS-42-350-M16/M20
42	400	42	M16/M20	AVS-42-400-M16/M20
42	450	42	M16/M20	AVS-42-450-M16/M20
42	500	42	M16/M20	AVS-42-500-M16/M20

# ANTİ VİBRASYON AVL FREZELEME TAKIMLARI

## ANTI-VIBRATION CARBIDE MILLING AVL SERIES



⊥ 0.005MM

⊙ 0.005MM

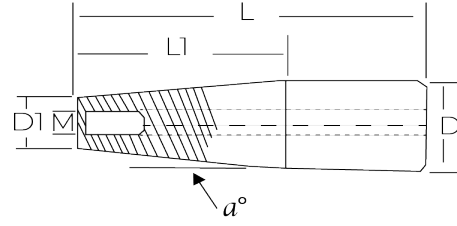
○ 0.005MM

BİRİM: MM  
(UNIT)

ØD (mm)	D1 (mm)	L (mm)	L1 (mm)	M	EUROLOY KOD EUROLOY CODE
10	9,5	100	30	M6	AVL10/9.5-100/30-M6
10	9,5	150	50	M6	AVL10-50-150-M6
12	11,5	150	50	M6	AVL12-50-150-M6
16	15,5	150	50	M8	AVL16-50-150-M8
16	15,5	200	50	M8	AVL16-50-200-M8
16	15,5	250	70	M8	AVL16-70-250-M8
16	15,6	120	85	M8	AVL16-85-120-M8
16	15,6	150	95	M8	AVL16-95-150-M8
16	15,6	200	145	M8	AVL16-145-200-M8
20	19,6	100	40	M10	AVL20-40-100-M10
20	19,6	150	90	M10	AVL20-90-150-M10
20	19,6	200	140	M10	AVL20-140-200-M10
24	23,5	100	40	M12	AVL24/23.5-100/40-M12
24	23,5	150	70	M12	AVL24/23.5-150/70-M12
24	23,5	200	100	M12	AVL24/23.5-200/100-M12
24	23,5	250	150	M12	AVL24/23.5-250/150-M12
24	23,5	300	200	M12	AVL24/23.5-300/200-M12
25	24,6	100	40	M12	AVL25-40-100-M12
25	24,6	150	85	M12	AVL25-85-150-M12
25	24,6	200	135	M12	AVL25-135-200-M12
32	31	200	70	M16	AVL32-70-200-M16
32	31	300	130	M16	AVL32-130-300-M16
32	31	350	150	M16	AVL32-150-350-M16







⊥ 0.005MM

⊙ 0.005MM

○ 0.005MM

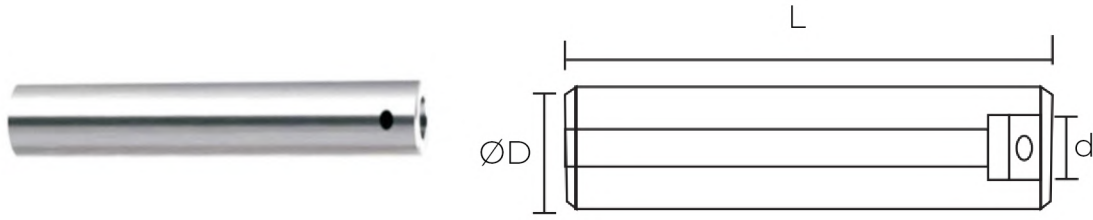
BİRİM: MM  
(UNIT)

ØD (mm)	D1 (mm)	L (mm)	L1 (mm)	M	Koniklik	EUROLOY KOD EUROLOY CODE
12	9,5	100	35	M6	1°30'	AFV12/9.5-100/35-M6 1°30'
12	9,5	150	70	M6	1°45'	AFV12/9.5-150/70-M6 1°45'
16	11,5	150	70	M8	1°45'	AFV16/11.2-150/70-M8 1°45'
20	14,5	100	40	M10	3°30'	AFV20/14.5-100/40-M10 3°30'
20	14,5	150	77	M10	1°45'	AFV20/14.5-150/77-M10 1°45'
16	15,5	200	150	M8	0° 43'	AFV16/15.5-200/150-M8 0° 43'
20	18,5	100	40	M10	0° 43'	AFV20/18.5-100/40-M10 0° 43'
25	18,5	150	70	M12	1° 43'	AFV25/18.5-150/70-M12 1° 43'
20	18,5	150	90	M10	0°19'	AFV20/18.5-150/90-M10 0°19'
20	18,5	200	140	M10	0°12'	AFV20/18.5-200/140-M10 0°12'
32	23,5	200	120	M16	1° 45'	AFV32/23.5-200/120-M16 1°45'
32	29	250	170	M16	0° 28'	AFV32/29-250/170-M16 0° 28'
32	29	300	200	M16	0° 28'	AFV32/29-300/200-M16 0° 28'



# ANTİ VİBRASYON DELİK İŞLEME TAKIMLARI

## ANTI-VIBRATION CARBIDE TURNING BORING HOLDER



⊥ 0.005MM

⊙ 0.005MM

○ 0.005MM

BİRİM: MM  
(UNIT)

ØD (mm)	d	L	Uygun Kafa (Suite Head)	Delik Aralığı (Hole Range)	EUROLOY KOD EUROLOY CODE
19	11	150	CBH20	20-26	AVC-19-LBK1-150
19	11	200	CBH20	20-26	AVC-19-LBK1-200
19	11	250	CBH20	20-26	AVC-19-LBK1-250
24	14	200	CBH25	25-33	AVC-24-LBK2-200
24	14	250	CBH25	25-33	AVC-24-LBK2-250
24	14	300	CBH25	25-33	AVC-24-LBK2-300
31	18	250	CBH32	33-42	AVC-31-LBK3-250
31	18	300	CBH32	33-42	AVC-31-LBK3-300
31	18	400	CBH32	33-42	AVC-31-LBK3-400
32	18	250	CBH32	33-42	AVC-32-LBK3-250
32	18	300	CBH32	33-42	AVC-32-LBK3-300
32	18	400	CBH32	33-42	AVC-32-LBK3-400