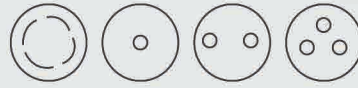




# TUNGSTEN KARBÜR ÇUBUKLAR

## *CEMENTED CARBIDE RODS*



# KALİTE BİLGİSİ

## GRADE INFORMATION



Kalite	Co (%)	Sertlik HRA	Yoğunluk (g/cm <sup>3</sup> )	(Çapraz Kırılma Dayancı)	Tane Boyutu (µm)	Uygulama Alanı
KH60U	6	93.8	14.8	3900	Superince Ultrafine	PCB matkapları, freze bıçakları ve gravür kamler dahil olmak üzere yüksek sertlikte malzeme işlemeye uygulanabilir. Applicable to the high hardness material processing, including PCB drills, milling cutters and gravers.
KH060S	6	92.5	14.85	3000	Mikronaltı Submicron	Elyaf takviyeli malzeme (karbon elyafı ve cam elyafı), kompozit malzeme, yüksek silikonlu alüminyum alaşımı ve grafit ürünleri için uygun elmas kaplama için en iyi malzeme. The best material for diamond coating, suitable for fiber reinforced material (carbon fiber and glass fiber), composite material, high-silicon aluminum alloy and graphite products.
KH103S	10.3	92.2	14.43	3800	Superince Ultrafine	Alaşımli çelik, paslanmaz çelik, dökme demir, demir dışı metal, süper alaşım vb. için geçerli olan yüksek hızlı frezeleme ve delmenin genel kullanımı için. For general use of high-speed milling and drilling, applicable to alloy steel, stainless steel, cast iron, non-ferrous metal, süper alloy etc.
KH102S	10	91.8	14.45	3700	Mikronaltı Submicron	Alaşımli çelik, paslanmaz çelik, demir dışı metal, süper alaşım vb. için geçerli olan frezeleme ve delme işlemlerinin genel kullanımı için. For general use of milling and drilling, applicable to alloy steel, stainless steel, non-ferrous metal, süper alloy etc.
KH100S	10	91.8	14.45	3700	Mikronaltı Submicron	Alaşımli çelik, paslanmaz çelik, demir dışı metal, süper alaşım vb. için geçerli ekonomik frezeleme ve delmenin genel kullanımı için. For general use of economic milling and drilling, applicable to alloy steel, stainless steel, non-ferrous metal, süper alloy etc.
KH120U	12.0	92.6	14.12	4200	Süperince Ultrafine	Alaşımli çelik (HRC50-60), paslanmaz çelik, demir dışı metal, titanyum alaşımı, süper alaşım vb. için geçerli olan yüksek hızlı frezelemenin özel karbür malzemesi. Special carbide material of high-speed milling, applicable to alloy steel (HRC50-60), stainless steel, non-ferrous metal, titanium alloy, süper alloy etc.
KH100SR	10.0	91.8	14.45	3700	Mikronaltı Submicron	Alaşımli çelik, demir dışı metal vb. için geçerli frezeleme için ekonomik kalite. Economic grade for milling, applicable to alloy steel, non-ferrous metal etc.
KH090U	9.0	93.0	14.50	3900	Süperince Ultrafine	Sertlik ve işlenmesi zor malzemelerin işlenmesi, paslanmaz işleme ve mikro kesici için geçerlidir. Applicable to processing the hardness and difficult-to-machine materials, stainless machining and micro cutter.

Nano < 0.2 µm	Ultra Fine 0.2 - 0.5 µm	Submicron 0.5 - 0.9 µm	Fine 1.0 - 1.3 µm	Medium 1.4 - 2.0 µm	Medium Coarse 2.1 - 3.4 µm	Coarse 3.5 - 5.0 µm	Extra Coarse > 5.0 µm

 **DOLU ÇUBUKLAR**

 **SOLID RODS**



 **EURELOY**  
CUTTING TOOLS





# DOLU ÇUBUKLAR

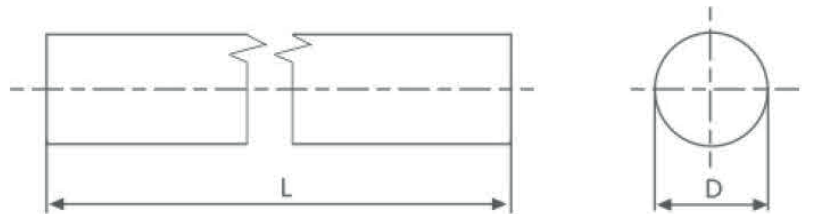
## SOLID RODS

Metrik Tip  
Metric Type

Taşlanmamış Unground	ØD(mm)		L(mm) (0,+5)
	Tolerans Tolerance	Taşlanmış Ground h6/h5	
1,3	+0/+0.15	1.0	310/330
2,3	+0/+0.15	2.0	310/330
3,3	+0/+0.15	3.0	310/330
3,8	+0/+0.20	3.5	310/330
4,3	+0/+0.20	4.0	310/330
4,8	+0/+0.20	4.5	310/330
5,3	+0/+0.20	5.0	310/330
5,8	+0/+0.20	5.5	310/330
6,3	+0/+0.20	6.0	310/330
6,8	+0/+0.30	6.5	310/330
7,3	+0/+0.30	7.0	310/330
7,8	+0/+0.30	7.5	310/330
8,3	+0/+0.30	8.0	310/330
8,8	+0/+0.30	8.5	310/330
9,3	+0/+0.30	9.0	310/330
9,8	+0/+0.30	9.5	310/330
10,3	+0/+0.30	10.0	310/330
10,8	+0/+0.30	10.5	310/330
11,3	+0/+0.30	11.0	310/330
11,8	+0/+0.30	11.5	310/330
12,3	+0/+0.30	12.0	310/330
12,8	+0/+0.40	12.5	310/330
13,3	+0/+0.40	13.0	310/330
13,8	+0/+0.40	13.5	310/330
14,3	+0/+0.40	14.0	310/330
14,8	+0/+0.40	14.5	310/330
15,3	+0/+0.40	15.0	310/330
15,8	+0/+0.40	15.5	310/330
16,3	+0/+0.40	16.0	310/330

Metrik Tip  
Metric Type

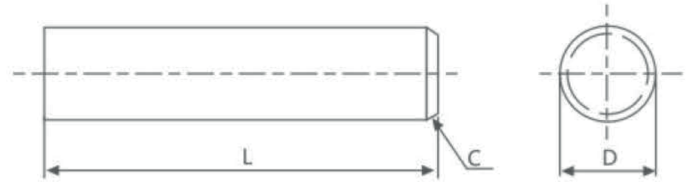
Taşlanmamış Unground	ØD(mm)		L(mm) (0,+5)
	Tolerans Tolerance	Taşlanmış Ground h6/h5	
16,8	+0/+0.50	16.5	310/330
17,3	+0/+0.50	17.0	310/330
17,8	+0/+0.50	17.5	310/330
18,3	+0/+0.50	18.0	310/330
18,8	+0/+0.50	18.5	310/330
19,3	+0/+0.50	19.0	310/330
20,3	+0/+0.50	20.0	310/330
21,3	+0/+0.50	21.0	310/330
22,3	+0/+0.50	22.0	310/330
23,3	+0/+0.50	23.0	310/330
24,3	+0/+0.50	24.0	310/330
25,3	+0/+0.50	25.0	310/330
26,3	+0/+0.50	26.0	310/330
27,3	+0/+0.50	27.0	310/330
28,3	+0/+0.50	28.0	310/330
29,3	+0/+0.50	29.0	310/330
30,3	+0/+0.50	30,0	310/330
31,3	+0/+0.50	31,0	310/330
32,3	+0/+0.50	32,0	310/330
33,3	+0/+0.50	33,0	310/330
34,3	+0/+0.50	34,0	310/330
35,3	+0/+0.50	35,0	310/330
36,3	+0/+0.50	36,0	310/330
37,3	+0/+0.50	37,0	310/330
38,3	+0/+0.50	38,0	310/330
39,3	+0/+0.50	39,0	310/330
40,3	+0/+0.50	40.0	310/330
45,3	+0.20/+0.70	45.0	310/330
50,3	+0.20/+0.70	50.0	310/330



**BOYU KESİLMİŞ DOLU ÇUBUKLAR****SOLID RODS CUT TO LENGTH**

Metrik Tip  
Metric Type

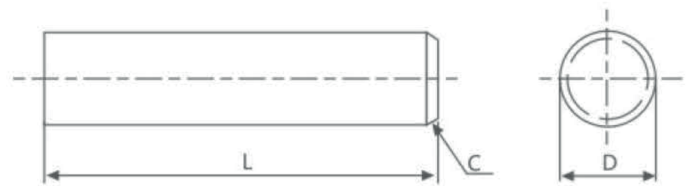
ØD(mm)		Taşlanmış Ground h6/h5	C(mm) (±0.1;45°±3°)	L(mm) (0,+1)
Taşlanmamış Unground	Tolerans Tolerance			
3,3	+0/+0.15	3	0,4	50
3,3	+0/+0.15	3	0,4	70
3,3	+0/+0.15	3	0,4	100
4,3	-0.10/+0.10	4	0,4	50
4,3	-0.10/+0.10	4	0,4	70
4,3	-0.10/+0.10	4	0,4	100
5,3	-0.10/+0.10	5	0,5	50
5,3	-0.10/+0.10	5	0,5	70
5,3	-0.10/+0.10	5	0,5	80
6,3	-0.10/+0.10	6	0,6	50
6,3	-0.10/+0.10	6	0,6	60
6,3	-0.10/+0.10	6	0,6	100
8,3	-0.05/+0.20	8	0,6	60
8,3	-0.05/+0.20	8	0,6	80
8,3	-0.05/+0.20	8	0,6	100
10,3	-0.05/+0.20	10	0,8	70
10,3	-0.05/+0.20	10	0,8	90



**BOYU KESİLMİŞ DOLU ÇUBUKLAR****SOLID RODS CUT TO LENGTH**

Metrik Tip  
Metric Type

ØD(mm)		Taşlanmış Ground h6/h5	C(mm) (±0.1;45°±3°)	L(mm) (0,+1)
Taşlanmamış Unground	Tolerans Tolerance			
10,3	-0.05/+0.20	10	0,8	100
11,3	-0.05/+0.25	11	0,8	110
12,3	-0.05/+0.25	12	0,8	75
12,3	-0.05/+0.25	12	0,8	90
12,3	-0.05/+0.25	12	0,8	100
12,3	-0.05/+0.25	12	0,8	120
14,3	+0/+0.40	14	0,8	75
14,3	+0/+0.40	14	0,8	110
14,3	+0/+0.40	14	0,8	125
16,3	+0/+0.40	16	0,8	100
16,3	+0/+0.40	16	0,8	125
18,3	+0/+0.50	18	1,0	100
18,3	+0/+0.50	18	1,0	150
20,3	+0/+0.50	20	1,0	100
20,3	+0/+0.50	20	1,0	120
20,3	+0/+0.50	20	1,0	150
25,3	+0/+0.50	25	1,0	100
25,3	+0/+0.50	25	1,0	150

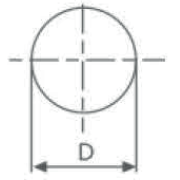
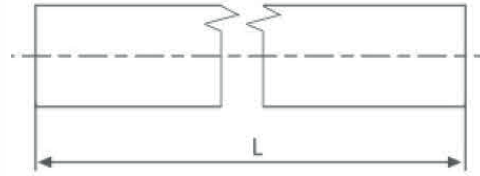


# DOLU ÇUBUKLAR

## SOLID RODS

Inç Tip  
Inch Type

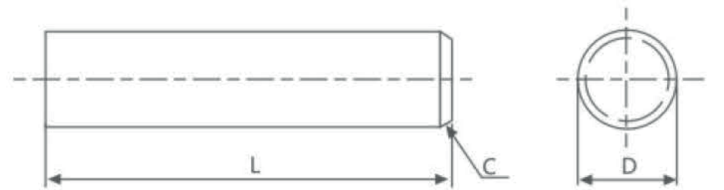
ØD(inch)	Taşlanmamış Tolerans <i>Unground Tol.</i>	Taşlanmış Tolerans <i>Ground Tol.</i>	L(inch) (0,+0.197)
1/8	+0.0118/+0.0177	h6/h5	13
3/16	+0.0118/+0.0196	h6/h5	13
1/4	+0.0118/+0.0236	h6/h5	13
5/16	+0.0118/+0.0236	h6/h5	13
3/8	+0.0118/+0.0236	h6/h5	13
1/2	+0.0118/+0.0275	h6/h5	13
5/8	+0.0118/+0.0275	h6/h5	13
3/4	+0.0118/+0.0314	h6/h5	13
1	+0.0118/+0.0314	h6/h5	13
1-1/4	+0.0118/+0.0314	h6/h5	13
1-1/2	+0.0118/+0.0314	h6/h5	13



**BOYU KESİLMİŞ DOLU ÇUBUKLAR****SOLID RODS CUT TO LENGTH**

Inç Tip  
Inch Type

ØD(inch)	Taşlanmamış Tolerans Unground tol.	Taşlanmış Tolerans Ground tol.	C(inch) (±0.004;45°±3°)	L(inch) (0,+0.003)
1/8	+0.0118/+0.0177	h6/h5	0,012	2-1/4
1/8	+0.0118/+0.0177	h6/h5	0,012	2-1/2
1/8	+0.0118/+0.0177	h6/h5	0,012	2
1/8	+0.0118/+0.0177	h6/h5	0,012	1-1/2
1/8	+0.0118/+0.0177	h6/h5	0,012	3
1/8	+0.0118/+0.0177	h6/h5	0,012	4
3/16	+0.0078/+0.0157	h6/h5	0,016	1-1/2
3/16	+0.0078/+0.0157	h6/h5	0,016	2
3/16	+0.0078/+0.0157	h6/h5	0,016	2-1/2
3/16	+0.0078/+0.0157	h6/h5	0,016	3
3/16	+0.0078/+0.0157	h6/h5	0,016	4
3/16	+0.0078/+0.0157	h6/h5	0,016	6
1/4	+0.009B+0.0196	h6/h5	0,024	2
1/4	+0.0098/+0.0196	h6/h5	0,024	2-1/2
1/4	+0.0098/+0.0196	h6/h5	0,024	3
1/4	+0.0098/+0.0196	h6/h5	0,024	3-1/4
1/4	+0.009B+0.0196	h6/h5	0,024	4
1/4	+0.0098/+0.0196	h6/h5	0,024	6
5/16	+0.0098/+0.0196	h6/h5	0,024	2
5/16	+0.0098/+0.0196	h6/h5	0,024	2-1/2
5/16	+0.009B+0.0196	h6/h5	0,024	3
5/16	+0.0098/+0.0196	h6/h5	0,024	3-1/2
5/16	+0.0098/+0.0196	h6/h5	0,024	4
5/16	+0.0098/+0.0196	h6/h5	0,024	6
3/8	+0.009B+0.0196	h6/h5	0,024	2
3/8	+0.0098/+0.0196	h6/h5	0,024	2-1/2
3/8	+0.0098/+0.0196	h6/h5	0,024	3
3/8	+0.0098/+0.0196	h6/h5	0,024	3-1/2
3/8	+0.009B+0.0196	h6/h5	0,024	4

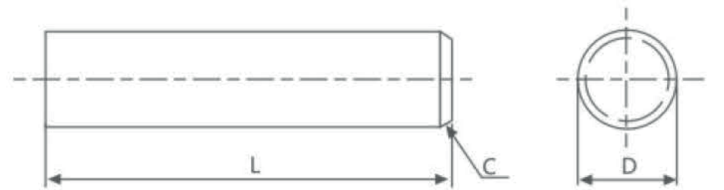




**BOYU KESİLMİŞ DOLU ÇUBUKLAR****SOLID RODS CUT TO LENGTH**

Inç Tip  
Inch Type

ØD(inch)	Taşlanmamış Tolerans Unground tol.	Taşlanmış Tolerans Ground tol.	C(inch) (±0.004;45°±3°)	L(inch) (0,+0.003)
3/8	+0.009B+0.0196	h6/h5	0,024	5
3/8	+0.0098/+0.0196	h6/h5	0,024	6
1/2	+0.0118/+0.0275	h6/h5	0,031	2-1/2
1/2	+0.0118/+0.0275	h6/h5	0,031	3
1/2	+0.0118/+0.0275	h6/h5	0,031	3-1/2
1/2	+0.0118/+0.0275	h6/h5	0,031	4
1/2	+0.0118/+0.0275	h6/h5	0,031	4-1/2
1/2	+0.0118/+0.0275	h6/h5	0,031	5
1/2	+0.0118/+0.0275	h6/h5	0,031	6
1/2	+0.0118/+0.0275	h6/h5	0,031	8
5/8	+0.0118/+0.0275	h6/h5	0,031	3
5/8	+0.0118/+0.0275	h6/h5	0,031	3-1/2
5/8	+0.0118/+0.0275	h6/h5	0,031	4
5/8	+0.0118/+0.0275	h6/h5	0,031	5
5/8	+0.0118/+0.0275	h6/h5	0,031	6
5/8	+0.0118/+0.0275	h6/h5	0,031	8
3/4	+0.0118/+0.0314	h6/h5	0,039	4
3/4	+0.0118/+0.0314	h6/h5	0,039	5
3/4	+0.0118/+0.0314	h6/h5	0,039	6
3/4	+0.0118/+0.0314	h6/h5	0,039	8
1	+0.0118/+0.0314	h6/h5	0,039	3
1	+0.0118/+0.0314	h6/h5	0,039	4
1	+0.0118/+0.0314	h6/h5	0,039	5
1	+0.0118/+0.0314	h6/h5	0,039	6



-  **MERKEZİ SOĞUTMA**
-  **DELİKLİ ÇUBUKLAR**
-  **RODS WITH CENTRAL**
-  **COOLANT HOLE**

 **EUROLOY**  
CUTTING TOOLS



# MERKEZİ SOĞUTMA DELİKLİ ÇUBUKLAR

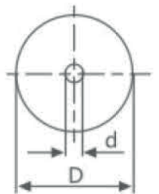
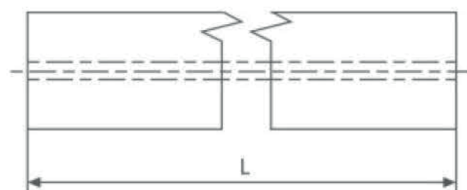
## RODS WITH CENTRAL COOLANT HOLE

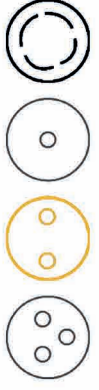
Metrik Tip  
Metric Type

Taşlanmamış Unground	ØD(mm)		Çap Diameter	Ød(mm)		L(inch) (0,+5)
	Tolerans Tolerance	Taşlanmış Ground		Tolerans Tolerance	Delik Sapması Hole Deviation	
4.3	+0/+0.2	h6/h5	0.6	±0.1	0.07	330
5.3	+0/+0.2	5	1.0	±0.1	0.07	330
6.3	+0/+0.2	6	1.0	±0.1	0.07	330
8.3	+0/+0.3	8	1.2	±0.15	0.07	330
10.3	+0/+0.3	10	2.0	±2	0.10	330
12.3	+0/+0.3	12	2.0	±2	0.10	330
14.3	+0/+0.4	14	2.0	±2	0.12	330
16.3	+0/+0.4	16	2.0	±2	0.12	330
18.3	+0/+0.5	18	3.0	±0.25	0.15	330
20.3	+0/+0.5	20	3.0	±0.25	0.15	330
22.3	+0/+0.5	22	3.0	±0.25	0.15	330
24.3	+0/+0.5	24	4.0	±0.25	0.15	330
26.3	+0/+0.5	26	4.0	±0.25	0.15	330
28.3	+0/+0.5	28	4.0	±0.25	0.15	330
30.3	+0/+0.5	30	5.0	±0.25	0.15	330
32.3	+0/+0.5	32	5.0	±0.25	0.15	330

Inç Tip  
Inch Type

ØD(inch)	Taşlanmamış Tolerans Unground Tol.	Taşlanmış Ground	Ød(inch)		Hole Deviation Delik Sapması	L(inch) (0,+0.197)
			Çap Diameter	Tolerans Tolerance		
1/4	+0.0118/+0.0236	h6/h5	3/77	±0.0039	0.0027	13
9/32	+0.0118/+0.0236	h6/h5	3/77	±0.0039	0.0027	13
5/16	+0.0118/+0.0236	h6/h5	4/85	±0.0059	0.0027	13
25/64	+0.0118/+0.0236	h6/h5	1/16	±0.0059	0.0039	13
13/32	+0.0118/+0.0236	h6/h5	1/16	±0.0059	0.0039	13
277/64	+0.0118/+0.0236	h6/h5	1/16	±0.0059	0.0039	13
31/64	+0.0118/+0.0275	h6/h5	3	±0.0098	0.0047	13
1/2	+0.0118/+0.0275	h6/h5	3/38	±0.0098	0.0047	13
9/16	+0.0118/+0.0275	h6/h5	5/51	±0.0098	0.0047	13
5/8	+0.0118/+0.0275	h6/h5	2/17	±0.0098	0.0047	13
3/4	+0.0118/+0.0314	h6/h5	2/17	±0.0098	0.0059	13
13/16	+0.0118/+0.0314	h6/h5	2/17	±0.0098	0.0059	13





**İKİ DÜZ SOĞUTMA**

**DELİKLİ ÇUBUKLAR**

**RODS WITH TWO**

**STRAIGHT COOLANT HOLES**

**EUROLOY**  
CUTTING TOOLS



# İKİ DÜZ SOĞUTMA DELİKLİ ÇUBUKLAR

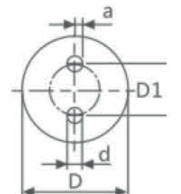
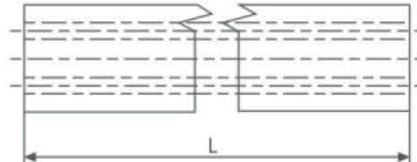
## RODS WITH TWO STRAIGHT COOLANT HOLES

Metrik Tip  
Metric Type

ØD(mm)		Taşlanmış Ground h6/h5	Ød(mm)		TkØ(mm)		Delik Sapması Hole Deviation	L(inch) (0,+5)
Taşlanmamış Unground	Tolerans Tolerance		Çap Diameter	Tolerans Tolerance	İki Delik Merkezinin Uzaklığı Bolt Core	Tolerans Tolerance		
6,3	+0/+0.2	6	1,0	30,10	2,90	+0/-0.2	0,15	330
7,3	+0/+0.3	7	1,0	+0,10	3,40	+0/-0.2	0,15	330
8,3	+0/+0.3	8	1,0	+0,10	3,85	+0/-0.2	0,15	330
9,3	+0/+0.3	9	1,0	+0,10	2,45	+0/-0.2	0,20	330
10,3	+0/+0.3	10	1,4	30,15	4,85	+0/-0.3	0,20	330
11,3	+0/+0.3	11	1,4	+0,15	4,85	+0/-0.3	0,30	330
12,3	+0/+0.3	12	1,8	+0,20	5,85	+0/-0.3	0,30	330
13,3	+0/+0.4	13	1,8	+0,20	5,85	+0/-0.3	0,34	330
14,3	+0/+0.4	14	1,8	30,20	6,85	+0/-0.3	0,37	330
15,3	+0/+0.4	15	2,0	+0,20	6,85	+0/-0.3	0,40	330
16,3	+0/+0.4	16	2,0	+0,20	7,85	+0/-0.3	0,45	330
17,3	+0/+0.5	17	2,0	+0,20	7,85	+0/-0.3	0,47	330
18,3	+0/+0.5	18	2,0	+0,20	8,85	+0/-0.3	0,50	330
19,3	+0/+0.5	19	2,0	+0,20	8,85	+0/-0.3	0,50	330
20,3	+0/+0.5	20	2,5	+0,25	9,80	+0/-0.3	0,50	330
21,3	+0/+0.5	21	2,5	+0,25	9,80	+0/-0.3	0,50	330
22,3	+0/+0.5	22	2,5	30,25	10,80	+0/-0.4	0,50	330
23,3	+0/+0.5	23	2,5	+0,25	10,80	+0/-0.4	0,50	330
24,3	+0/+0.5	24	3,0	+0,25	11,75	+0/-0.4	0,50	330
25,3	+0/+0.5	25	3,0	+0,25	11,75	+0/-0.4	0,50	330
26,3	+0/+0.5	26	3,0	30,25	13,00	+0/-0.5	0,50	330
28,3	+0/+0.5	28	3,0	+0,25	14,00	+0/-0.5	0,50	330
30,3	+0/+0.5	30	3,0	+0,25	14,00	+0/-0.5	0,50	330
32,3	+0/+0.5	32	3,0	+0,25	14,00	+0/-0.5	0,50	330

İnç Tip  
Inch Type

ØD(inch)	Taşlanmamış Unground	Taşlanmış Ground	Ød(inch)		TkØ(mm)		Delik Sapması Hole Deviation	L(inch) (0,+0.197)
			Çap Diameter	Tolerans Tolerance	İki Delik Merkezinin Uzaklığı Bolt Core	Tolerans Tolerance		
1/4	+0.0118/+0.023	h6/h5	3/77	+0,0039	4/35	+0/-0.0078	0,0059	13
9/32	+0.0118/+0.023	h6/h5	3/77	+0,0039	2/15	+0/-0.0078	0,0059	13
5/16	+0.0118/+0.023	h6/h5	4/85	+0,0059	5/33	+0/-0.0078	0,0059	13
25/64	+0.0118/+0.023	h6/h5	1/16	+0,0059	17/89	+0/-0.0118	0,0079	13
13/32	+0.0118/+0.023	h6/h5	1/16	30,0059	17/89	+0/-0.0118	0,0118	13
27/64	+0.0118/+0.023	h6/h5	1/16	30,0059	3/13	+0/-0.0118	0,0118	13
31/64	+0.0118/+0.027	h6/h5	3/38	+0,0098	3/13	+0/-0.0118	0,0118	13
1/2	+0.0118/+0.027	h6/h5	3/38	+0,0098	3/13	+0/-0.0118	0,0134	13
9/16	+0.0118/+0.027	h6/h5	5/51	30,0098	24/89	+0/-0.0118	0,0146	13
5/8	+0.0118/+0.027	h6/h5	2/17	30,0098	17/55	+0/-0.0118	0,0177	13
3/4	+0.0118/+0.031	h6/h5	2/17	+0,0098	23/66	+0/-0.0118	0,0197	13
13/16	+0.0118/+0.031	h6/h5	2/17	+0,0098	27/70	+0/-0.0118	0,0197	13





- İKİ SPİRAL SOĞUTMA
- DELİKLİ ÇUBUKLAR
- RODS WITH 2 SPRIAL
- COOLANT HOLES

**EUROLOY**  
CUTTING TOOLS



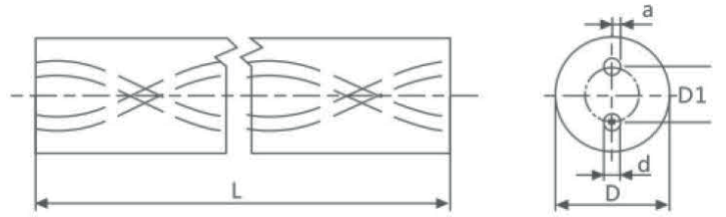
# İKİ SPRİTAL SOĞUTMA DELİKLİ ÇUBUKLAR (40°)

## RODS WITH TWO SPRİAL COOLANT HOLES(40°)

Metrik Tip

Metric Type

Taşlanmamış Unground	ØD(mm)		Ød(mm)		TkØ(mm)		Eğim Pitch (±0.5°)	Delik Sapması Hole Deviation	L(mm) (0,+5°)
	Tolerans Tolerance	Taşlanmış Ground h6/h5	Çap Diameter	Tolerans Tolerance	İki Delik Merkezinin Uzaklığı Bolt Core	Tolerans Tolerance			
6,0	+0.7/+1.1	6,0	0,70	+0,10	2,60	+0/-0.4	32,65	0,15	330
8,0	+0.8/+1.2	8,0	1,00	+0,15	4,00	+0/-0.4	43,53	0,15	330
10,0	+0.8/+1.2	10,0	1,40	+0,15	4,80	+0/-0.6	54,41	0,20	330
12,0	+0.9/+1.3	12,0	1,40	±-0.15	6,25	+0/-0.8	65,30	0,30	330
14,0	+0.9/+1.3	14,0	1,75	+0,20	7,10	+0/-0.8	76,18	0,40	330
15,0	+0.9/+1.3	15,0	1,75	+0,20	7,70	+0/-0.8	81,62	0,40	330
16,0	+1.0/+1.4	16,0	1,75	+0,20	8,30	+0/-0.8	87,06	0,40	330
18,0	+1.0/+1.4	18,0	2,00	±-0.25	9,55	+0/-0.8	97,95	0,50	330
20,0	+1.0/+1.4	20,0	2,00	+0,25	10,40	+0/-1.0	108,83	0,50	330
22,0	+1.0/+1.5	22,0	2,00	+0,25	11,60	+0/-1.0	119,71	0,50	330
25,0	+1.1/+1.6	25,0	2,00	1-0.25	13,30	+0/-1.0	136,03	0,50	330

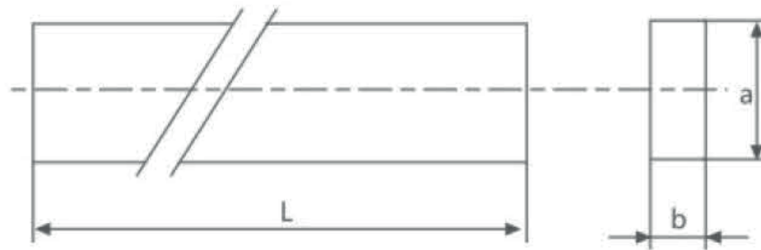


# DİKDÖRTGEN LAMALAR

## RECTANGULAR STRIPS

a(mm)	b(mm) (+0.15,+0.35)	L(mm) (0,+5)
3 +0.2/+0.4	2	330
4 +0.2/+0.4	3	330
5 +0.2/+0.4	2	330
5 +0.2/+0.4	3.5	330
5.5 +0.2/+0.4	1	330
6 +0.2/+0.4	3	330
8 +0.2/+0.4	2	330
8 +0.2/+0.4	3	330
10 +0.3/+0.5	2	330
10 +0.3/+0.5	2.5	330
10 +0.3/+0.5	3	330
10 +0.3/+0.5	3.5	330
12 +0.3/+0.5	2	330
12 +0.3/+0.5	2.5	330
12 +0.3/+0.5	3	330
12 +0.3/+0.5	3.5	330
12 +0.3/+0.5	4.5	330
12 +0.3/+0.5	5	330
14 +0.3/+0.5	3	330

a(mm)	b(mm) (+0.15,+0.35)	L(mm) (0,+5)
15 +0.4/+0.6	2	330
15 +0.4/+0.6	3.5	330
15 +0.4/+0.6	4	330
16 +0.4/+0.6	3	330
17 +0.4/+0.6	3	330
17 +0.4/+0.6	5	330
18 +0.4/+0.6	2	330
18 +0.4/+0.6	3.5	330
20 +0.4/+0.6	2	330
20 +0.4/+0.6	3	330
20 +0.4/+0.6	3.5	330
20 +0.4/+0.6	5	330
22 +0.4/+0.6	3.5	330
22 +0.4/+0.6	4	330
25 +0.4/+0.6	3.5	330
25 +0.4/+0.6	4	330
30 +0.4/+0.6	5	330
32 +0.4/+0.6	3	330
34 +0.4/+0.6	3	330



**DİĞER TEKNİK STANDARTLAR****OTHER TECHNICAL STANDARDS****Çap Toleransı h6/h5(mm)****Diameter Tolerance h6/h5(mm)**

Diameter $\emptyset$	h6	h5
$0 < \emptyset \leq 3$	+0/-0.006	+0/-0.004
$3 < \emptyset \leq 6$	+0/-0.008	+0/-0.005
$6 < \emptyset \leq 10$	+0/-0.009	+0/-0.006
$10 < \emptyset \leq 18$	+0/-0.011	+0/-0.008
$18 < \emptyset \leq 30$	+0/-0.013	+0/-0.009
$30 < \emptyset \leq 40$	+0/-0.016	+0/-0.0011

**Taşlanmamış Çubukların Doğrusallık Toleransları (mm)****Unground Rods Straightness Tolerances (mm)**

Diameter $\emptyset$	Tolerans / Tolerance
$\emptyset \leq 6$	0.60
$\emptyset < 6$	0.50

**Taşlanmış Çubukların Doğrusallık Toleransları (mm)****Ground Rods Straightness Tolerances (mm)**

L Dia $\emptyset$	$0 < L \leq 60$	$60 < L \leq 80$	$80 < L \leq 100$	$100 < L \leq 120$	$120 < L \leq 150$	$150 < L \leq 200$	$200 < L \leq 330$
$2 \leq \emptyset < 4$	0.005	0.008	0.012	0.020			
$4 \leq \emptyset < 6$	0.005		0.008	0.012	0.020		
$6 \leq \emptyset < 8$	0.005			0.008	0.015	0.020	
$8 \leq \emptyset < 10$	0.005				0.008	0.015	
$10 \leq \emptyset < 16$	0.005				0.008		0.015
$16 \leq \emptyset < 20$	0.005					0.008	0.015
$20 \leq \emptyset < 40$	0.005						0.008

**Taşlanmış Çubukların Dairesellik Toleransları (mm)****Ground Rods Roundness Tolerances (mm)**

L Dia $\emptyset$	$0 < L \leq 60$	$60 < L \leq 80$	$80 < L \leq 100$	$100 < L \leq 120$	$120 < L \leq 150$	$150 < L \leq 200$	$200 < L \leq 330$
$2 \leq \emptyset < 40$	0.003						



[info@euroloy.com](mailto:info@euroloy.com)  
[www.euroloy.com](http://www.euroloy.com)