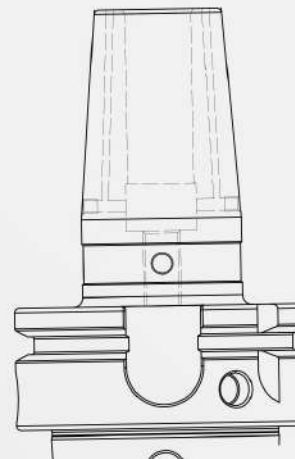
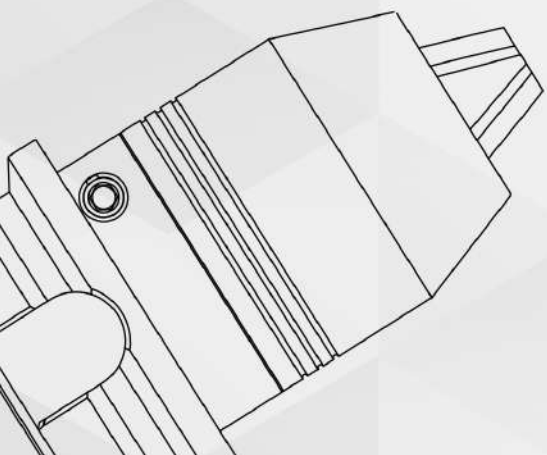
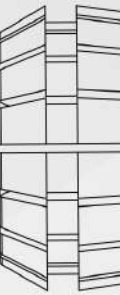


**EUROLOY**


**TAKIM TUTUCULAR**

*TOOL HOLDERS*

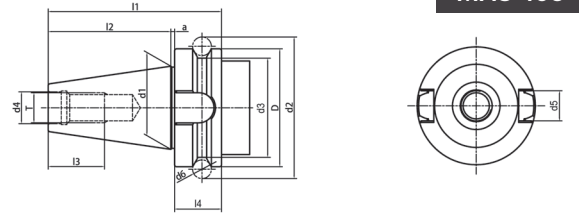


# TAKIM TUTUCULAR

## TOOL HOLDERS

 Standart Konik  
Taper Standard


MAS 403

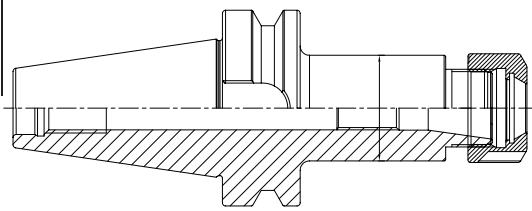


Model	D	d1	d2	d3	d4	d5	d6	l1	l2	l3	l4	a	T
BT30	46	31.75	56.14	38	12.5	16.1	8	70.4	48.4	24	20	2	M12X1.75P
BT40	63	44.45	75.679	53	17	16.1	10	92.4	65.4	30	25	2	M16X2.0P
BT50	100	69.85	119.02	83	25	25.7	15	139.8	101.8	45	35	3	M24X3.0P

Malzeme: Allied kasası sertleştirilmiş çelik,  
siyah yüzeyli ve hassas şekilde taşlanmış.  
Konik Tolerans: <AT3  
Sertlik: HRC 56-58  
Karbon Derinliği: 0.8mm±0.2mm  
Maksimum Tükenme: <0.005mm  
Yüzey Pürüzlülüğü: Ra>0.005mm  
Soğutma AD+B tipi isteğe göre yapılabilir.  
Sipariş verirken lütfen G6.3 veya G2.5 dengelemesini  
belirtin.  
Şaft gövdesi standardı: MAS 403 and B6339

Material: Allied case hardened steel,  
black-finished and precisely grinded  
Taper Tolerance: <AT3  
Hardness: HRC 56-58  
Carbon Depth: 0.8mm±0.2mm  
Max Run Out: <0.005mm  
Surface Roughness: Ra>0.005mm  
Cooling AD+B type can be made by request  
When Order, please specify balancing  
G6.3 or G2.5  
Shank body standard: MAS 403 and B6339

 Standart Konik  
Taper Standard




Form A: Soğutma kaynağı olmadan.  
Form A: Without cooling supply.

Form AD: Merkezi soğutma beslemesi.  
Form AD: Central cooling supply.

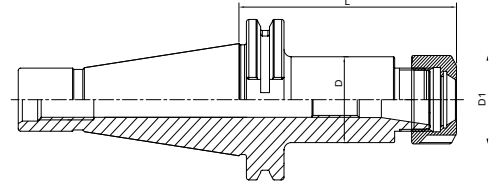
Form AD+B: Merkezi soğutma ve yaka boyunca dahili  
soğutma sıvısı.  
Form AD+B: Central cooling and internal coolant th-  
rough the collar.

# TAKIM TUTUCULAR

## TOOL HOLDERS

 ER Pens Tutucu DIN6499  
ER Collet Chuck DIN6499

MAS 403



Takım No Order No	Model	D	D1	L1	Sıkma Aralığı Clamping Range	Wt(kg)
11302070	BT30xER20-70	35	31.75	70	0.5-13	0.55
11302570	BT30xER25-70	42	31.75	70	0.5-16	0.58
11303270	BT30xER32-70	50	31.75	70	1-20	0.85
11304080	BT30xER40-80	63	31.75	80	2-26	1.10
11401670	BT40xER16-70	32	44.45	70	0.5-10	1.14
11402070	BT40xER20-70	35	44.45	70	0.5-13	1.16
114020100	BT40xER20-100	35	44.45	100	0.5-13	1.38
114020130	BT40xER20-130	35	44.45	130	0.5-13	1.76
11402570	BT40xER25-70	42	44.45	70	0.5-16	1.22
114025100	BT40xER25-100	42	44.45	100	0.5-16	1.52
114025130	BT40xER25-130	42	44.45	130	0.5-16	1.90
114025160	BT40xER25-160	42	44.45	160	0.5-16	2.10
11403270	BT40xER32-70	50	44.45	70	1-20	1.30
114032100	BT40xER32-100	50	44.45	100	1-20	1.72
114032130	BT40xER32-130	50	44.45	130	1-20	2.05
114032160	BT40xER32-160	50	44.45	160	1-20	2.58
11404080	BT40xER40-80	63	44.45	80	2-26	1.45
114040100	BT40xER40-100	63	44.45	100	2-26	2.01
114040160	BT40xER40-160	63	44.45	160	2-26	3.29
11501670	BT50xER16-70	28	69.85	70	0.5-10	3.64
11502070	BT50xER20-70	35	69.85	70	0.5-13	3.67
115020100	BT50xER20-100	35	69.85	100	0.5-13	3.84
11502570	BT50xER25-70	42	69.85	70	0.5-16	3.70
115025100	BT50xER25-100	42	69.85	100	0.5-16	4.54
11503270	BT50xER32-70	50	69.85	70	1-20	3.73
115032100	BT50xER32-100	50	69.85	100	1-20	5.20
115032160	BT50xER32-160	50	69.85	160	1-20	4.97
115032200	BT50xER32-200	50	69.85	200	1-20	5.48
11504080	BT50xER40-80	63	69.85	80	2-26	3.76
115040100	BT50xER40-100	63	69.85	100	2-26	4.44
115040160	BT50xER40-160	63	69.85	160	2-26	5.77
115040200	BT50xER40-200	63	69.85	200	2-26	6.66

Kullanım: DIN 6499 penslerinde düz saplı takımları sıkıştırmak için.

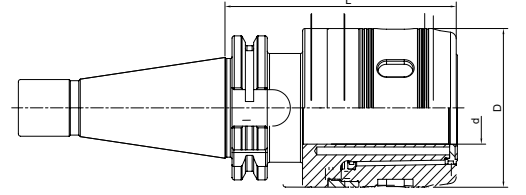
Use: For clamping tools with straight shank in collets of DIN 6499

# TAKIM TUTUCULAR

## TOOL HOLDERS

**Hassas Freze Tutucu**  
**Precision Milling Chuck**

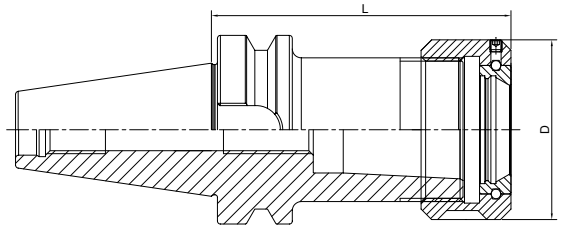
MAS 403



Takım No Order No	Model	d1	L2	Wt(kg)
11302075C	BT30-SC20-75	20	75	1.8
11302090C	BT30-SC20-90	20	90	2.0
11402080C	BT40-SC20-80	20	80	2.4
114020100C	BT40-SC20-100	20	100	2.5
114020135C	BT40-SC20-135	20	135	2.8
11403290C	BT40-SC32-90	32	90	2.6
114032105C	BT40-SC32-105	32	105	2.6
114032135C	BT40-SC32-135	32	135	3.0
115020105C	BT50-SC20-105	20	105	4.5
115020150C	BT50-SC20-150	20	150	4.9
115032110C	BT50-SC32-110	32	110	5.2
115032135C	BT50-SC32-135	32	135	5.9
115032165C	BT50-SC32-165	32	165	6.6
115032200C	BT50-SC32-200	32	200	6.0
115042110C	BT50-SC42-110	42	110	6.0
115042130C	BT50-SC42-130	42	130	6.5
115042165C	BT50-SC42-165	42	165	7.4

**OZ Pens Tutucu DIN6391**  
**OZ Collet Chuck DIN6391**

MAS 403



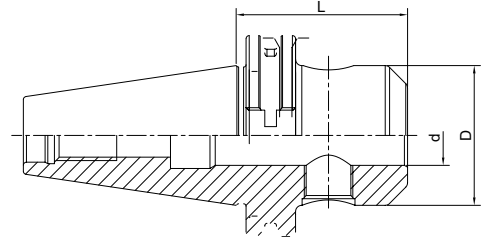
Takım No Order No	Model	D2	L	D	L1	Collets
114025800Z	BT40-OZ25-80	3-25	80	60	30	OZ25
1140251200Z	BT40-OZ25-120	3-25	120	60	30	OZ25
114032800Z	BT40-OZ32-80	6-32	80	72	33	OZ32
1140321500Z	BT40-OZ32-150	6-32	150	72	33	OZ32
115025900Z	BT50-OZ25-90	3-25	90	60	30	OZ25
1150251300Z	BT50-OZ25-130	3-25	130	60	30	OZ25
1150321050Z	BT50-OZ32-105	6-32	105	72	33	OZ32
1150321500Z	BT50-OZ32-150	6-32	150	72	33	OZ32

# TAKIM TUTUCULAR

## TOOL HOLDERS

### TG Pens Tutucu TG Collet Chuck

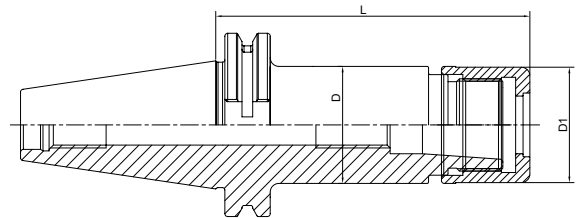
MAS 403



Takim No Order No	Model	L	I1	D	d1	t2	T	Wt(kg)
11307570TG	BT30xTG75-70	118.4	70	46	50	M16x2.0P	TW1-1/2"-12	1.10
113075100TG	BT30xTG75-100	148.4	100	46	50	M16x2.0P	TW1-1/2"-12	1.15
1130100100TG	BT30xTG100-100	148.4	100	46	6	-	TW1-7/8"-12UN	1.20
114010070TG	BT40xTG100-70	135.4	70	63	60	M16x2.0P	TW1-7/8"-12UN	1.36
1140100100TG	BT40xTG100-100	165.4	100	63	60	M16x2.0P	TW1-7/8"-12UN	1.90
1140100120TG	BT40xTG100-120	185.4	120	63	60	M16x2.0P	TW1-7/8"-12UN	2.38
1140150105TG	BT40xTG150-105	170.4	105	63	82	M24x2.0P	TW2-5/8"-12	2.70
1140150120TG	BT40xTG150-120	185.4	120	63	82	M24x2.0P	TW2-5/8"-12	2.90
115010085TG	BT50xTG100-85	186.8	85	100	60	M24x2.0P	TW1-7/8"-12UN	3.40
1150100100TG	BT50xTG100-100	201.8	100	100	60	M24x2.0P	TW1-7/8"-12UN	4.40
1150100120TG	BT50xTG100-120	221.8	120	100	60	M24x2.0P	TW1-7/8"-12UN	5.10
115015090TG	BT50xTG150-90	191.8	90	100	82	M24x2.0P	TW2-5/8"-12	5.70
1150150105TG	BT50xTG150-105	206.8	105	100	82	M24x2.0P	TW2-5/8"-12	6.10
1150150120TG	BT50xTG150-120	221.8	120	100	82	M24x2.0P	TW2-5/8"-12	6.50

### SK Pens Tutucu SK Collet Chuck


MAS 403



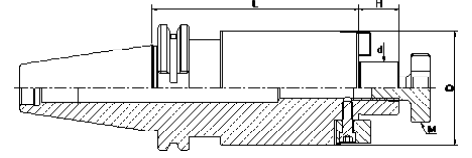
Takim No Order No	Model	L	D	d	d1	d2	Wt(kg)
11300645SK	BT30-SK6-45	93.4	46	9.946	18	18	0.49
11300660SK	BT30-SK6-60	108.4	46	9.946	18	18	0.90
11301045SK	BT30-SK10-45	93.4	46	14.981	30	27.6	0.80
11301060SK	BT30-SK10-60	108.4	46	14.981	30	27.6	0.56
11301080SK	BT30-SK10-90	138.4	46	14.981	30	27.6	0.58
11301660SK	BT30-SK16-60	108.4	46	23.939	40	52	0.59
11400690SK	BT40--SK6-90	155.4	63	9.946	18	32	1.16
114006120SK	BT40-SK6-120	185.4	63	9.946	18	32	1.21
11401090SK	BT40-SK10-90	155.4	63	14.981	30	40	1.29
114010120SK	BT40-SK10-120	185.4	63	14.981	30	40	1.42
11401690SK	BT40-SK16-90	155.4	63	23.939	40	52	1.40
114016120SK	BT40-SK16-120	185.4	63	23.939	40	52	1.71
11402590SK	BT40-SK25-90	155.4	63	35.029	55.1	55	1.49
114025120SK	BT40-SK25-120	185.4	63	35.029	55.1	55	1.80
11500690SK	BT50-SK6-90	191.8	100	9.946	18	32	4.00
115006120SK	BT50-SK6-120	221.8	100	9.946	18	32	4.20
115010105SK	BT50-SK10-105	206.8	100	14.981	30	40	3.99
115010150SK	BT50-SK10-150	251.8	100	14.981	30	40	4.60
115010165SK	BT50-SK10-165	266.8	100	14.981	30	40	4.30
115016105SK	BT50-SK16-105	206.8	100	23.939	40	52	4.15
115016150SK	BT50-SK16-150	251.8	100	23.939	40	52	4.70
115016165SK	BT50-SK16-165	266.8	100	23.939	40	52	4.50
115025105SK	BT50-SK25-105	206.8	100	35.029	55.1	55	4.50
115025150SK	BT50-SK25-150	251.8	100	35.029	55.1	55	4.80

# TAKIM TUTUCULAR

## TOOL HOLDERS

 FMB Yüzey Frezeleme Tutucu DIN6357  
FMB Face Mill Holder DIN6357

MAS 403



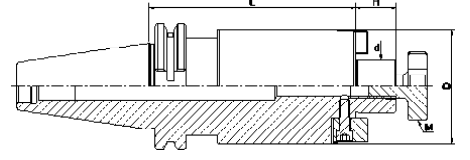
Takım No Order No	Model	D	L	C1	H1	G
113022445FB	BT30-FMB22-45	22	45	56	18	M10
11302745FB	BT30-FMB27-45	27	45	64	20	M12
11402245FB	BT40-FMB22-45	22	45	48	18	M10
11402290FB	BT40-FMB22-90	22	90	48	18	M10
11402745FB	BT40-FMB22-45	27	45	60	20	M12
11402760FB	BT40-FMB27-60	27	60	60	20	M12
11402790FB	BT40-FMB27-90	27	90	60	20	M12
11403245FB	BT40-FMB32-45	32	45	63	21	M16
11403260FB	BT40-FMB32-60	32	60	63	21	M16
11404045FB	BT40-FMB40-45	40	45	68	23	M16
11404060FB	BT40-FMB40-60	40	60	68	23	M16
11502245FB	BT40-FMB22-45	22	45	48	18	M10
11502275FB	BT40-FMB22-75	22	75	48	18	M10
11502745FB	BT40-FMB27-45	27	45	65	20	M12
11502775FB	BT40-FMB27-75	27	75	65	20	M12
11502790FB	BT40-FMB27-90	27	90	65	20	M12
11503245FB	BT40-FMB32-45	32	45	73	21	M16
11503275FB	BT40-FMB32-75	32	75	73	21	M16
11504045FB	BT40-FMB40-45	40	45	85	23	M16
11504075FB	BT40-FMB40-75	40	75	85	23	M16
115040105FB	BT40-FMB40-105	40	105	85	23	M16

# TAKIM TUTUCULAR

## TOOL HOLDERS

**FMA Yüzey Frezeleme Tutucu**  
FMA Face Mill Holder


MAS 403



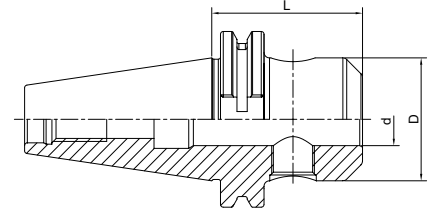
Takım No Order No	Model	D1	L1	G	Kesici Çapı Cutter Dia
1130254L45FA	BT30-FMA25.4-45	25.4	45	M12	76
1130254L60FA	BT30-FMA25.4-60	25.4	60	M12	76
1140254L45FA	BT40-FMA25.4-45	25.4	45	M12	76
1140254L60FA	BT40-FMA25.4-60	25.4	60	M12	76
11403175L45FA	BT40-FMA31.75-45	31.75	45	M12	102
11403175L60FA	BT40-FMA31.75-60	31.75	60	M12	102
11403175L90FA	BT40-FMA31.75-90	31.75	90	M12	102
1140381L60FA	BT40-FMA38.1-60	38.1	60	M16	127
11403175L90FA	BT40-FMA38.1-90	38.1	90	M16	127
1150254L75FA	BT50-FMA25.4-75	25.4	75	M12	76(80)
1150254L105FA	BT50-FMA25.4-105	25.4	105	M12	76(80)
1150254L125FA	BT50-FMA25.4-125	25.4	125	M12	76(80)
115025L150FA	BT50-FMA-25.4-150	25.4	150	M12	76(80)
11503175L45FA	BT50-FMA31.75-45	31.75	45	M12	100(102)
11503175L75FA	BT50-FMA31.75-75	31.75	75	M12	100(102)
11503175L105FA	BT50-FMA31.75-105	31.75	105	M12	100(102)
11503175L125FA	BT50-FMA31.75-125	31.75	125	M12	100(102)
11503175L150FA	BT50-FM131.75-150	31.75	150	M12	100(102)
1150381L45FA	BT50-FMA38.1-45	38.1	45	M16	125
1150381L75FA	BT50-FMA38.1-75	38.1	75	M16	125
1150381L45FA	BT50-FMA50.8-45	50.8	45	M16	125
1150508L75FA	BT50-FMA50.8-75	50.8	75	M16	125

# TAKIM TUTUCULAR

## TOOL HOLDERS

 MTA Mors Konik Adaptörü DIN6383  
MTA Morse Taper Adapter DIN6383

MAS 403




Takım No Order No	Model	MT.No	L	ØD	Wt(kg)
113045MA1	BT30-MTA1-45	1	45	25	0.43
113060MA2	BT30-MTA2-60	2	60	32	0.5
114045MA1	BT40-MTA1-45	1	45	25	1.02
114060MA2	BT40-MTA2-60	2	60	32	1.11
114075MA3	BT40-MTA3-75	3	75	40	1.15
114090MA4	BT40-MTA4-90	4	90	48	1.43
115045MA1	BT50-MTA1-45	1	45	25	3.6
115050MA2	BT50-MTA2-50	2	50	32	3.63
115060MA2	BT5-MTA2-60	2	60	32	3.64
1150120MA2	BT50-MTA2-120	2	120	32	4.3
115065MA3	BT50-MTA3-65	3	65	40	3.7
1150120MA3	BT50-MTA3-120	3	120	40	4.4
1150135MA3	BT50-MTA3-135	3	135	40	4.46
1150150MA3	BT50-MTA3-150	3	150	40	4.68
115085MA4	BT50-MTA4-85	4	85	48	3.75
115095MA4	BT50-MTA4-95	4	95	48	3.85
1150105MA5	BT50-MTA5-105	5	105	63	5
1150108MA5	BT50-MTA5-108	5	108	63	5.06

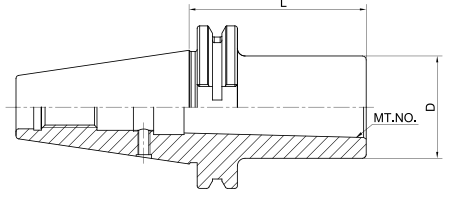


# TAKIM TUTUCULAR

## TOOL HOLDERS

 **MTB Mors Konik Adaptörü (Çekme Çubuğu) DIN6364**  
**MTB Morse Taper Adapter (with Drawbar) DIN6364**


MAS 403



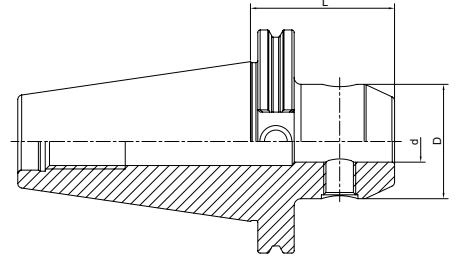
Takım No Order No	Model	MT.No	L	D	Wt(kg)
113045MB1	BT30-MTB1-45	1	45	25	0.55
113060MB2	BT30-MTB2-60	2	60	32	0.6
114045MB1	BT40-MTB1-45	1	45	25	1.05
114045MB2	BT40-MTB2-45	2	45	32	1.85
114075MB3	BT40-MTB3-75	3	75	40	1.9
1140100MB4	BT40-MTB4-75	4	75	48	1.7
115045MB1	BT50-MTB1-45	1	45	25	4.1
115045MB2	BT50-MTB2-45	2	45	32	3.9
115060MB3	BT50-MTB3-60	3	60	40	3.9
115075MB4	BT50-MTB4-75	4	75	50	4.2
1150120MB5	BT50-MTB5-120	5	120	70	4.3

# TAKIM TUTUCULAR

## TOOL HOLDERS

 Yandan Kilitli Parmak Freze Tutucu DIN6359/1835B (Weldon)  
Side Lock End Mill Holder DIN6359/1835B (Weldon)


MAS 403



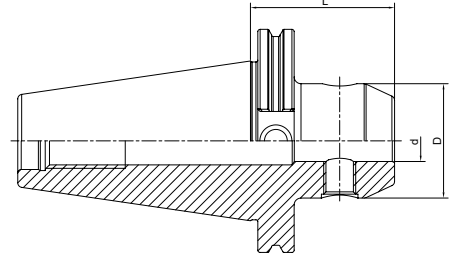
Takim No Order No	Model	d1	d2	L1	Wt(kg)
11300660SA	BT30-SLA6-60	6	25	60	0.55
11300860SA	BT30-SLA8-60	8	28	60	0.60
11301060SA	BT30-SLA10-60	10	35	60	0.70
11301260SA	BT30-SLA12-60	12	42	60	0.75
11301675SA	BT30-SLA16-75	16	48	75	1.05
11302075SA	BT30-SLA20-75	20	52	75	1.10
11302590SA	BT30-SLA25-90	25	65	90	1.70
11400650SA	BT40-SLA6-50	6	25	50	1.10
11400850SA	BT40-SLA8-50	8	28	50	1.10
11401063SA	BT40-SLA10-63	10	35	63	1.25
11401263SA	BT40-SLA12-63	12	42	63	1.30
11401663SA	BT40-SLA16-63	16	48	63	1.40
11402063SA	BT40-SLA20-63	20	52	63	11.40
114025100SA	BT40-SLA25-100	25	65	100	2.50
114032100SA	BT40-SLA32-100	32	72	100	2.75
11500663SA	BT50-SLA6-63	6	25	63	3.80
11500863SA	BT50-SLA8-63	8	28	63	3.80
11501063SA	BT50-SLA10-63	10	35	63	3.90
11501280SA	BT50-SLA12-80	12	42	80	4.00
11501680SA	BT50-SLA16-80	16	48	80	4.40
11502080SA	BT50-SLA20-80	20	52	80	4.40
115025100SA	BT50-SLA25-100	25	65	100	5.10
115032105SA	BT50-SLA32-105	32	72	105	5.20
115040115SA	BT50-SLA40-115	40	90	115	6.60
115042120SA	BT50-SLA42-120	42	90	120	6.70

# TAKIM TUTUCULAR

## TOOL HOLDERS

 Parmak Freze Tutucu Düzüğü Kuzey DIN6359/1835E  
End Mill Holder Whistle North DIN6359/1835E

MAS 403



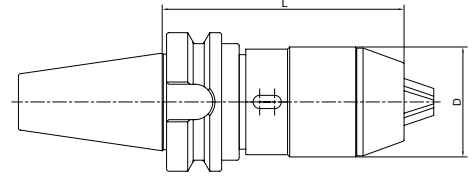
Takım No Order No	Model	d	D	L
114065SB	BT40-SLB06-50	6	25	50
11400850SB	BT40-SLB08-50	8	28	50
11401063SB	BT40-SLB10-63	10	35	63
11401263SB	BT40-SLB12-63	12	42	63
11401463SB	BT40-SLB14-63	14	44	63
11401663SB	BT40-SLB16-63	16	48	63
11401863SB	BT40-SLB18-63	18	50	63
1402063SB	BT40-SLB20-63	20	52	63
11402590SB	BT40-SLB25-90	25	65	90
114032100SB	BT40-SLB32-100	32	72	100
114040120SB	BT40-SLB40-120	40	80	120
11500663SB	BT50-SLB06-63	6	25	63
11500863SB	BT50-SLB08-63	8	28	63
11501063SB	BT50-SLB10-63	10	35	63
11501280SB	BT50-SLB12-80	12	42	80
11501480SB	BT50-SLB14-80	14	44	80
11501680SB	BT50-SLB16-80	16	48	80
11501880SB	BT50-SLB18-80	18	50	80
11502080SB	BT50-SLB20-80	20	52	80
115025100SB	BT50-SLB25-100	25	65	100
115032105SB	BT50-SLB32-105	32	72	105
115040110SB	BT50-SLB40-110	40	80	110

# TAKIM TUTUCULAR

## TOOL HOLDERS

**APU Delik Pens Tutucu**  
APU Drill Chuck Holder

MAS 403



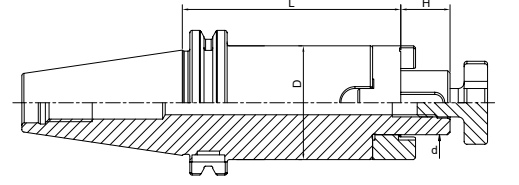
Takim No Order No	Model	Clamping Range	D	L	
				Min	Max
11300880A	BT30-APU08-80	1-8	36.3	75	82
113013100A	BT30-APU13-100	1-13	51.5	97	104.5
11400885A	BT40-APU08-85	1-8	36.3	79	86.5
114013110A	BT40-APU-13-110	1-3	51.5	98	109
114016130A	BT40-APU16-130	3-16	58	116	130
11500895A	BT50-APU08-95	1-8	36.3	90	97.5
115013120A	BT50-APU13-120	1-13	51.5	109	120
115013180A	BT50-APU13-180	1-13	51.5	169	180
115016130A	BT50-APU16-130	3-16	58	116	130
115016190A	BT50-APU16-190	3-16	58	176	190

# TAKIM TUTUCULAR

## TOOL HOLDERS

 Çok İşlevli Kabuk Freze Tutucu DIN6358  
Combi Shell Mill Holder DIN6358

MAS 403



Takım No Order No	Model	d	D	L	A
11301645CS	BT30-SEMC16-45	16	32	17	45
11302247CS	BT30-SEMC22-47	22	40	19	47
11302749CS	BT30-SEMC27-49	27	48	21	49

11401655CS	BT40-SEMC16-55	16	32	17	55
114016100CS	BT40-SEMC16-100	16	32	17	100
11402255CS	BT40-SEMC22-55	22	40	19	55
114022100CS	BT40-SEMC22-100	22	40	19	100
11402755CS	BT40-SEMC27-55	27	48	21	55
114027100CS	BT40-SEMC27-100	27	48	21	100
11403260CS	BT40-SEMC32-60	32	58	24	60
114032100CS	BT40-SEMC32-100	32	58	24	100
11404060CS	BT40-SEMC40-60	40	70	27	60
114040100CS	BT40-SEMC40-100	40	70	257	100

11501670CS	BT50-SEMC16-70	16	32	17	70
11502270CS	BT50-SEMC22-70	22	40	19	70
11502770CS	BT50-SEMC27-70	27	48	21	70
11503270CS	BT50-SEMC32-70	32	58	24	70
11504070CS	BT50-SEMC40-70	40	70	27	70




**EURLOY**

**SK**

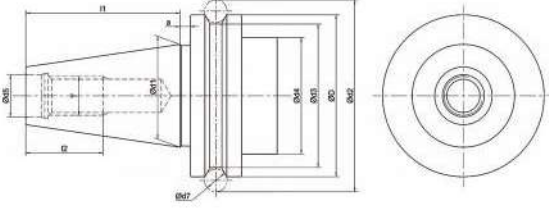


# TAKIM TUTUCULAR

## TOOL HOLDERS

 Standart Konik  
Taper Standard


DIN69871



Model	D	d1	d2	d3	d4	d5	d6	d7	l1	l2	l3	l4	l5	e1	e2
SK30	50	31.75	59.3	44.3	45	13	16.1	4	47.8	24	19	16.4	15	21	5
SK40	63.55	44.45	72.3	56.25	50	17	16.1	4	68.4	32	25	22.8	18.5	27	5
SK50	97.5	69.85	107.25	91.25	80	25	25.7	6	101.75	47	37.7	35.5	30	42	7

Malzeme: Allied kasası sertleştirilmiş çelik,  
siyah yüzeyle ve hassas şekilde taşlanmış.  
Konik Tolerans: <AT3  
Sertlik: HRC 56-58  
Karbon Derinliği: 0.8mm±0.2mm  
Maksimum Tükenme: <0.005mm  
Yüzey Pürüzlülüğü: Ra>0.005mm  
Soğutma AD+B tipi isteğe göre yapılabilir.  
Sipariş verirken lütfen G6.3 veya G2.5 dengelemesini  
belirtin.  
Şaft gövdesi standardı: DIN69871

*Material: Allied case hardened steel,  
black-finished and precisely grinded  
Taper Tolerance: <AT3  
Hardness: HRC 56-58  
Carbon Depth: 0.8mm±0.2mm  
Max Run Out: <0.005mm  
Surface Roughness: Ra<0.005mm  
Cooling AD+B type can be made by request  
When Order, please specify balancing  
G6.3 or G2.5  
Shank body standard: DIN69871*

 Soğutma  
Cooling

Form A: Soğutma kaynağı olmadan.  
Form A: Without cooling supply.

Form AD: Merkezi soğutma beslemesi.  
Form AD: Central cooling supply.

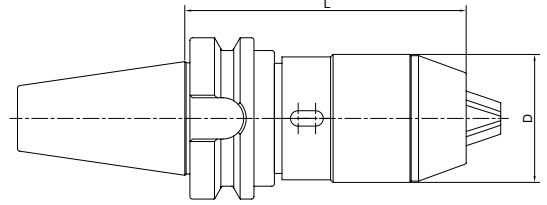
Form AD+B: Merkezi soğutma ve yaka boyunca dahili  
soğutma sıvısı.  
Form AD+B: Central cooling and internal collant through  
the collar.

# TAKIM TUTUCULAR

## TOOL HOLDERS

### Hassas Freze Pensi Precision Milling Chuck

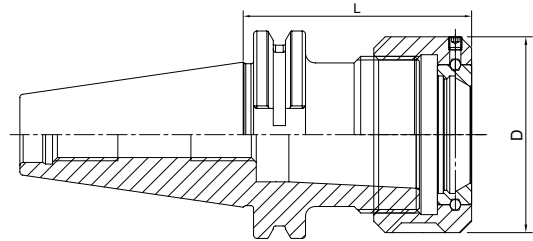
DIN69871



Takim No Order No	Model	d1	d2	L1	L2	Wt(kg)
22302085C	SK30-SC20-85	20	55	85	70	1.9
223020100C	SK30-SC20-100	20	55	100	70	2.1
22402085C	SK40-SC20-85	20	55	85	70	2.4
224020100C	SK40-SC20-100	20	55	100	70	2.5
224020135C	SK40-SC20-135	20	55	135	70	2.8
224032105C	SK40-SC20-105	32	73	105	75	2.7
224032135C	SK40-SC20-135	32	73	135	75	3.0
225020105C	SK50-SC20-105	20	55	105	70	4.5
225020150C	SK50-SC20-150	20	55	150	70	4.9
225032110C	SK50-SC32-110	32	73	110	75	5.2
225032135C	SK50-SC32-135	32	73	135	75	5.9
225042110C	SK50-SC42-110	42	95	110	90	6.0

### OZ Pens Tutucu OZ Collet Chuck

DIN69871



Takim No Order No	Model	L	D	Pens Collet
224025700Z	SK40-OZ25-70	70	60	OZ25
2240251000Z	SK40-OZ25-70	100	60	OZ25
224032900Z	SK40-OZ32-90	90	72	OZ32
225025850Z	SK50-OZ25-85	85	60	OZ25
2250251000Z	SK50-OZ25-100	100	60	OZ25
2250332700Z	SK50-OZ32-70	70	72	OZ32

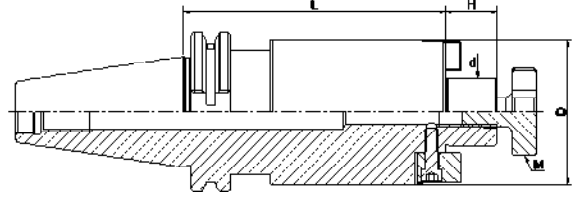


# TAKIM TUTUCULAR

## TOOL HOLDERS

### Yüzey Frezeleme Tutucu Face Mill Holder

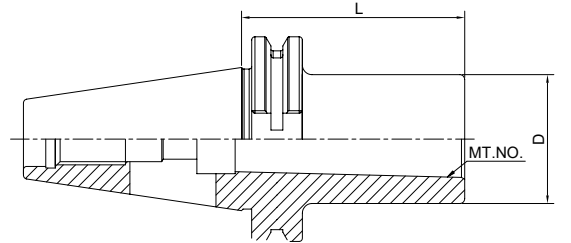
DIN6357



Takım No Order No	Model	L	ØC	ØD	H	G
22401645FB	SK40-FMB16	45	16	38	17	M8
22402245FB	SK40-FMB22-45	45	22	48	19	M10
22402750FB	SK40-FMB27-50	50	27	58	21	M12
22403255FB	SK40-MFB32-55	55	32	78	24	M16
22404055FB	SK40-FMB40-55	55	40	88	27	M20
22501645FB	SK50-FMB16-45	45	16	38	17	M8
22502245FB	SK50-FMB22-45	45	22	48	19	M10
22502745FB	SK50-FMB27-45	45	27	58	21	M12
22503255FB	SK50-FMB32-55	55	32	78	24	M16
22504055FB	SK50-FMB40-55	55	40	88	27	M20

### MTA Morse Konik Adaptörü MTA Morse Taper Adapter


DIN6383



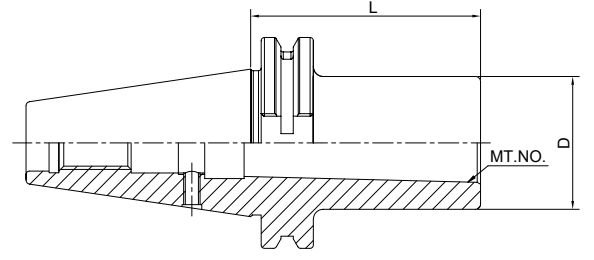
Takım No Order No	Model	MT.No	L	D	Wt(kg)
223050MA1	SK30-MTA1-50	1	50	25	1.6
223050MA2	SK30-MTA2-50	2	50	32	0.8
223075MA3	SK30-MTA3-75	3	75	40	0.9
224050MA1	SK40-MTA1-50	1	50	25	1.3
224050MA2	SK40-MTA2-50	2	50	32	1.5
224065MA3	SK40-MTA3-65	3	65	40	1.8
224095MA4	SK40-MTA4-95	4	95	50	2.4
2240125MA5	SK40-MTA5-125	5	125	63	3.8
225045MA1	SK50-MTA1-45	1	45	25	44.1
225060MA2	SK50-MTA2-60	2	60	32	4.4
225065MA3	SK50-MTA3-65	3	65	40	4.5
225070MA4	SK50-MTA4-70	4	70	50	4.9
2250105MA5	SK50-MTA5-105	5	105	65	5.2

## TAKIM TUTUCULAR

### TOOL HOLDERS

 MTB Morse Konik Adaptör (Çekme Çubuğu)  
MTB Morse Taper Adapter (with Drawbar)


DIN69871



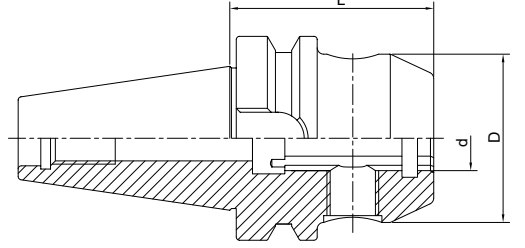
Takim No Order No	Model	MT No	L	D	Wt(kg)
224050MB1	SK40-MTB1-50	1	50	25	1.3
224050MB2	SK40-MTB2-50	2	50	32	1.5
224065MB3	SK40-MTB3-65	3	65	40	1.8
224095MB4	SK40-MTB4-95	4	95	50	2.4
225060MB1	SK50-MTB1-60	1	60	25	4.1
225060MB2	SK50-MTB2-60	2	60	32	4.4
225065MB3	SK50-MTB3-60	3	65	40	4.5
225085MB4	SK50-MTB4-85	4	85	50	4.9
2250120MB5	SK50-MTB5-120	5	120	65	5.2

# TAKIM TUTUCULAR

## TOOL HOLDERS

 Yan Kilit Parmak Freze Tutucu  
Side Lock End Mill Holder

DIN1835B



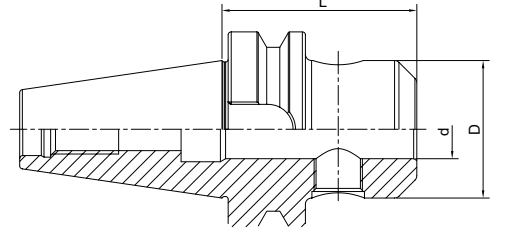
Takim No Order No	Model	d	D	L	Wt(kg)
22300650SA	SK30-SLA6-50	6	25	50	0.73
22300850SA	SK30-SLA8-50	8	28	50	0.80
22301050SA	SK30-SLA10-50	10	35	50	0.90
22301250SA	SK30-SLA12-50	12	42	50	0.90
22301663SA	SK30-SLA16-63	16	48	63	1.10
22400650SA	SK40-SLA6-50	6	25	50	0.85
22400850SA	SK40-SLA8-50	8	28	50	1.00
22401050SA	SK40-SLA10-50	10	35	50	1.10
22401250SA	SK40-SLA12-50	12	42	50	1.30
22401663SA	SK40-SLA16-63	16	48	63	1.40
22402063SA	SK40-SLA20-63	20	52	63	1.50
224025100SA	SK40-SLA25-100	25	65	100	2.40
224032100SA	SK40-SLA32-100	32	72	100	2.70
22500663SA	SK50-SLA6-63	6	25	63	3.10
22500863SA	SK50-SLA8-63	8	28	63	3.10
22501063SA	SK50-SLA10-63	10	35	63	3.30
22501263SA	SK50-SLA12-63	12	42	63	3.50
22501663SA	SK50-SLA16-63	16	48	63	3.45
22502063SA	SK50-SLA20-63	20	52	63	3.50
22502580SA	SK50-SLA25-80	25	65	80	4.20
225032100SA	SK50-SLA32-100	32	72	100	5.00
225040100SA	SK50-SLA40-100	40	90	100	5.60
225050125SA	SK50-SLA50-125	50	100	125	5.70

# TAKIM TUTUCULAR

## TOOL HOLDERS

 Whistle Notch Tip Parmak Freze Tutucu  
End Mill Holder Whistle North

DIN6359/ 1835E



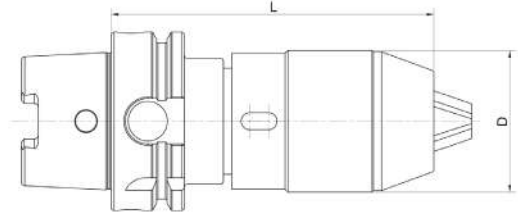
Takım No Order No	Model	d	D	L	Wt(kg)
22300880A	SK30-APU08-80	1-8	37	80	0.6
223013120A	SK30-APU13-120	1-13	50	120	1.45
223016120A	SK30-APU16-120	3-16	57	120	1.78
22400875A	SL40-APU08-75	1-8	37	75	1.46
224013100A	SK40-APU13-100	1-13	50	100	2
224016105A	SK40-APU16-105	3-16	57	105	2.33
22500875A	SK50-APU08-75	1-8	37	75	3.86
225013100A	SK50-APU13-100	1-13	50	100	4.4
225016105A	SK50-APU16-105	3-16	57	105	4.73

# TAKIM TUTUCULAR

## TOOL HOLDERS

**APU Delik Pens Tutucu**  
APU Drill Chuck Holder


DIN6359/ 1835E



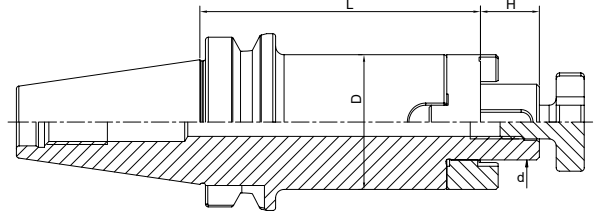
Takim No Order No	Model	d	D	L
22400650SB	SK40-SLB06-50	6	25	50
22400850SB	SK40-SLB08-50	8	28	50
22401050SB	SK40-SLLB10-50	10	35	50
22401250SB	SK40-SLB12-50	12	42	50
22401450SB	SK-SLB14-50	14	44	50
22401663SB	SK-SLB16-63	16	48	63
22401863SB	SK40-SLB18-63	18	50	63
22402063SB	SK40-SLB20-63	20	52	63
224025100SB	SK40-SLB25-100	25	65	100
22500663SB	SK50-SLB06-63	6	25	63
22500863SB	SK50-SLB08-63	8	28	63
22501063SB	SK50-SLB10-63	10	35	63
22501263SB	SK50-SLB12-63	12	42	63
22501463SB	SK50-SLB14-63	14	44	63
22501663SB	SK50-SLB16-63	16	48	63
22501863SB	SK50-SLB18-63	18	50	63
22502063SB	SK50-SLB20-63	20	52	63
22502580SB	SK50-SLB25-80	25	65	80
225032100SB	SK50-SLB32-100	32	72	100
225040100SB	SK50-SLB40-100	40	80	100

# TAKIM TUTUCULAR

## TOOL HOLDERS

 Kombi Freze Kabuk Tutucu  
Combi Shell Mill Holder


DIN6358



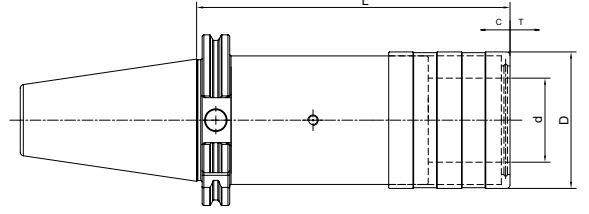
Takim No Order No	Model	d	D	L	L1
22301650CS	SK30-SEMC16-50	16	63	17	50
22302250CS	SK30-SEMC22-50	22	63	19	50
22302755CS	SK30-SEMC27-55	27	48	21	55
22303260CS	SK30-SEMC32-60	32	58	24	60
22401655CS	SK40-SEMC16-55	16	32	17	55
224016100CS	SK40-SEMC16-100	16	32	17	100
22402255CS	SK40-SEMC22-55	22	40	19	55
224022100CS	SK40-SEMC22-100	22	40	19	100
22402755CS	SK40-SEMC27-55	27	48	21	55
224027100CS	SK40-SEMC27-100	27	48	21	100
22403260CS	SK40-SEMC32-60	32	58	24	60
224032100CS	SK-SEMC32-100	32	58	24	100
22404060CS	SK-SEMC40-60	40	70	27	60
224040100CS	SK-SEMC40-100	40	70	27	100
22501655CS	SK50-SEMC16-55	16	32	17	55
225016100CS	SK50-SEMC16-100	16	32	17	100
22502255CS	SK50-SEMC22-55	22	40	19	55
225022100CS	SK50-SEMC22-100	22	40	19	100
22502755CS	SK50-SEMC27-55	27	48	21	55
225027100CS	SK50-SEMC27-100	27	48	21	100
22503260CS	SK50-SEMC32-55	32	58	24	60
225032100CS	SK50-SEMC32-100	32	58	24	100
22504060CS	SK50-SEMC40-55	40	70	27	60
225040100CS	SK50-SEMC40-100	40	70	27	100

# TAKIM TUTUCULAR

## TOOL HOLDERS

 Kombi Freze Kabuk Tutucu  
Combi Shell Mill Holder

DIN69871



Takım No Order No	Model	H	d	D	Kapasite Capacity
22400160Q	SK40-GR1-60	60	19	38	M3-M14
224002100Q	SK40-GR2-100	100	31	55	M5-M124
224003138Q	SK40-GR3-138	138	48	79	M14-M36
22500162Q	SK50-GR1-62	62	19	38	M3-M14
22500283Q	SK50-GR2-83	83	31	55	M5-M24
225003133Q	SK50-GR3-133	133	48	79	M14-M36



**EURLOY**


**NT**



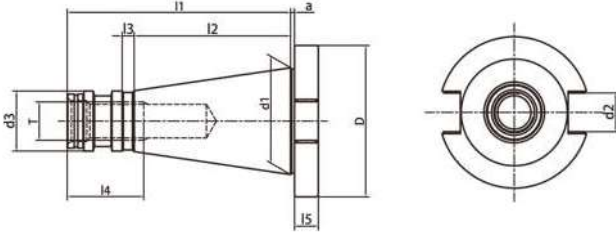


# TAKIM TUTUCULAR

## TOOL HOLDERS

 Standart Konik  
Taper Standard

DIN2080




Model	D	d1	d2	d3	a	l1	l2	l3	l4	l5	T
NT30	49	31.75	16.1	17.04	1.6	68.4	48.4	3	24	8	M12/1/2"-12
NT40	63	44.45	16.1	24.92	1.6	93.4	65.4	5	32	10	M16/5/8"-11
NT50	97.5	69.85	25.7	39.19	3.2	126.8	101.8	8	47	12	M24/1"-8

Malzeme: Allied kasası sertleştirilmiş çelik,  
siyah yüzeyli ve hassas şekilde taşlanmış.  
Konik Tolerans: <AT3  
Sertlik: HRC 56-58  
Karbon Derinliği: 0.8mm±0.2mm  
Maksimum Tükenme: <0.005mm  
Yüzey Pürüzlülüğü: Ra>0.005mm  
Soğutma AD+B tipi isteğe göre yapılabilir.  
Sipariş verirken lütfen G6.3 veya G2.5 dengelemesini  
belirtin.  
Şaft gövdesi standardı: DIN69871

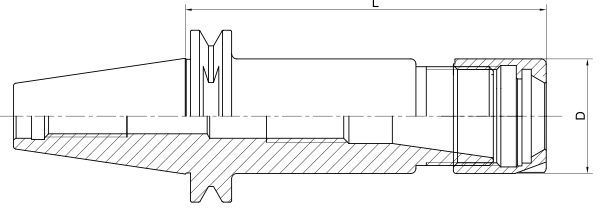
*Material: Allied case hardened steel,  
black-finished and precisely grinded  
Taper Tolerance: <AT3  
Hardness: HRC 56-58  
Carbon Depth: 0.8mm±0.2mm  
Max Run Out: <0.005mm  
Surface Roughness: Ra<0.005mm  
Cooling AD+B type can be made by request  
When Order, please specify balancing  
G6.3 or G2.5  
Shank body standard: DIN69871*

# TAKIM TUTUCULAR

## TOOL HOLDERS

 ER Pens Tutucu  
ER Collet Chuck

DIN6499



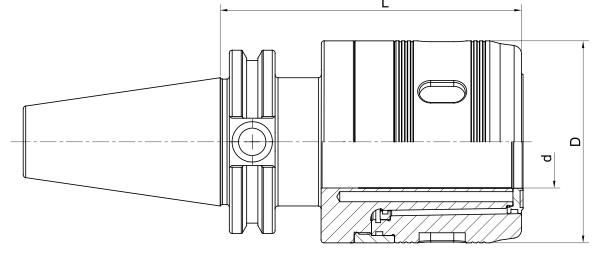
Takim No Order No	Model	L1	d1	Sıkma Aralığı Clamping Range	Wt(kg)
33302070	NT30-ER20-70	70	34	0.5-13	0.6
333020100	NT30-ER20-100	100	34	0.5-13	0.8
333025100	NT30-ER25-100	100	42	0.5-16	0.9
33303260	NT30-ER32-60	60	50	Oca.20	0.8
333032100	NT30-ER32-100	100	50	Oca.20	0.9
33401645	NT40-ER16-45	45	28	0.5-10	1.0
334016100	NT40-ER16-100	100	32	0.5-10	1.1
33402045	NT40-ER20-45	45	34	0.5-13	1.2
334020100	NT40-ER20-100	100	34	0.5-13	1.3
334025100	NT40-ER25-100	100	42	0.5-16	1.5
33403260	NT40-ER32-60	60	50	1-20	1.3
334032100	NT40-ER32-100	100	50	1-20	1.7
33404070	NT40-ER40-70	70	63	2-26	1.4
335016100	NT50-ER16-100	100	28	0.5-10	3.1
335020100	NT50-ER20-100	100	34	0.5-13	3.2
335020150	NT50-ER20-150	150	34	0.5-13	3.3
335032100	NT50-ER32-100	100	50	1-20	3.3
33504080	NT50-ER40-80	80	63	2-26	3.2
33504080	NT50-ER40-100	80	63	2-26	3.4

# TAKIM TUTUCULAR

## TOOL HOLDERS

**Hassas Freze Tutucusu**  
**Precision Milling Chuck**

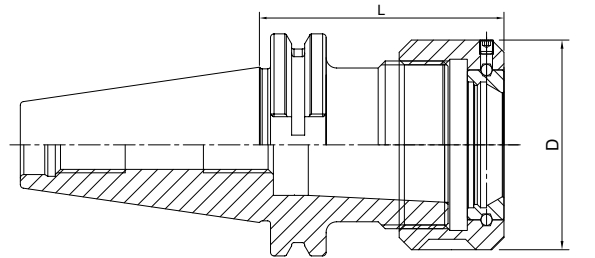
DIN2080



Takim No Order No	Model	Sıkma Aralığı Clamping Range	d	L	G
33302580C	NT30-ASC25-80	6-25	25	80	M12x1.75P 1/2"-12
33303290C	NT30-ASC32-90	6-32	32	90	
33402580C	NT40-SC25-80	6-25	25	80	M16x2.0P 5/8"-11
334025130C	NT40-SC25-130	6-25	25	130	
33403285C	NT40-SC32-85	6-32	32	85	
334032130C	NT40-SC32-130	6-32	32	130	
33502585C	NT50-SC25-85	6-25	25	85	M24x3.0P 1"-8
335025150C	NT50-SC25-150	6-25	25	150	
33503290C	NT50-SC32-90	6-32	32	90	
335032150C	NT50-SC32-150	6-32	32	150	
33504295C	NT50-SC42-95	6-42	42	95	
335042150C	NT50-SC42-150	6-42	42	150	

**OZ Pens Tutucu**  
**OZ Collet Chuck**

DIN6391



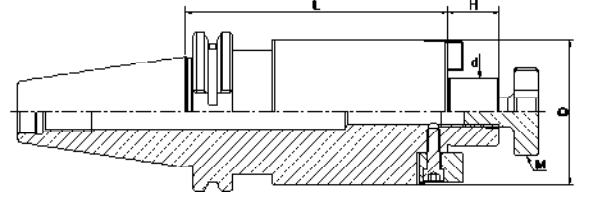
Takim No Order No	Model	Sıkma Aralığı Clamping Range	L	D	G
334025630Z	NT40-OZ25-63	3-25	63	60	M16x2.0P 5/8"-11
3340251000Z	NT40-OZ25-100	3-25	100	60	
334032900Z	NT40-OZ32-90	6-32	90	72	
335025630Z	NT50-OZ25-63	3-25	63	60	M24x3.0P 1"-8
3350251000Z	NT50-OZ25-100	3-25	100	60	
335032700Z	NT50-OZ32-70	6-32	70	72	

# TAKIM TUTUCULAR

## TOOL HOLDERS

### FMB Yüzey Frezeleme Tutucu FMB Face Mill Holder

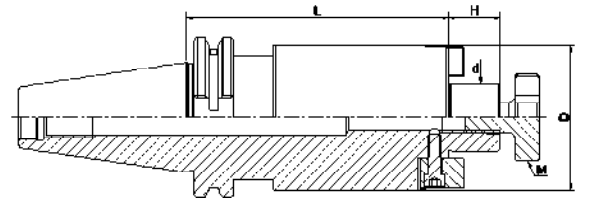
DIN2080



Takım No Order No	Model	d	L1	L2	D	G	
33302220FB	NT30-FMB22-20	2	20	18	53	M10	M12x1.75P 1/2"-12
33302720FB	NT30-FMB27-20	27	20	20	54	M12	
33303220FB	NT30-FMB32-20	32	20	21	59	M16	
33402220FB	NT40-FMB22-20	22	20	18	48	M10	M16x2.0P 5/8"-11
33402720FB	NT40-FMB27-20	27	20	20	58	M12	
33403220FB	NT40-FMB32-20	32	20	21	69	M16	
33404020FB	NT40-FMB40-20	40	20	24	80	M16	
33406024FB	NT40-FMB60-24	60	24	32	128	-	
33502220FB	NT50-FMV22-20	22	20	18	40	M10	M24x3.0P 1"-8
33502720FB	NT50-FMB27-20	27	20	20	70	M12	
33503220FB	NT50-FMB32-20	32	20	21	76	M16	
33504020FB	NT50-FMB40-20	40	20	24	88	M16	
33506024FB	NT50-FMB60-24	60	24	32	128	-	

### FMA Yüzey Frezeleme Tutucu FMA Face Mill Holder (In inch)

DIN2080



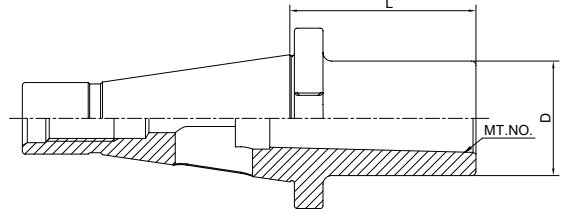
Takım No Order No	Model	L1	Øs	ØD	L2	W
3330254L20FA	NT30-FMA25.4-20	20	25.4	50	20	9.5
33303175L2FA	NT30-FMA31.75-25	25	31.75	60	22	12.7
3330381L30FA	NTA30-FMA38.1-30	30	38.1	80	25	15.9
3340254L20FA	NT40-FMA25.4-20	25	25.4	50	20	9.5
33403175L25FA	NT40-FMA31.75-25	25	31.75	60	22	12.7
3340381L30FA	NT40-FMA38.1-30	30	38.1	80	25	15.9
3340508L35FA	NT40-FMA50.8-35	35	50.8	100	28	15.9
3350254L35FA	NT50-FMA25.4-35	35	25.4	50	20	9.5
33503175L3FA	NT50-FMA31.75-35	35	31.75	60	22	12.7
3350381L35FA	NT50-FMA38.1-35	35	38.1	80	25	15.9
3350508L35FA	NT50-FMA50.8-35	35	50.8	100	28	15.9

# TAKIM TUTUCULAR

## TOOL HOLDERS

 MTA Morse Konik Adaptörü  
MTA Morse Taper Adapter

DIN2080



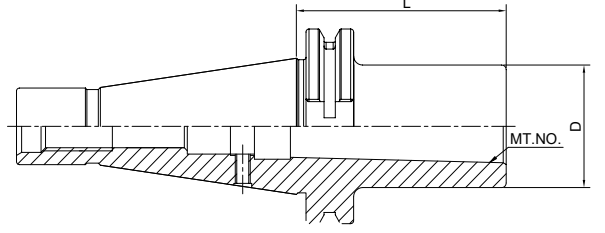
Takım No Order No	Model	MT.No	L	C	Sıkma Cıvatası Draw Bolt
333045MA1	NT30-MTA1-45	MTA1	45	25	M12x1.75P 1/2-12
333050MA2	NY30-MTA2-50	MTA2	50	32	
333065MA3	NT30-MTA3-65	MTA3	65	40	
334030MA1	NT40-MTA1-30	MTA1	30	25	M16x2.0P 5/8/11
334040MA2	NT40-MTA2-40	MTA2	40	32	
334070MA3	NT40-MTA3-70	MTA3	70	40	
334090MA4	NT40-MTA4-90	MTA4	90	50	
335030MA2	NT50-MTA2-30	MTA2	30	32	M24x3.0P 1"-8
335030MA3	NT50-MTA3-30	MTA3	30	40	
335070MA4	NT50-MTA4-70	MTA4	70	50	
3350105MA5	NT50-MTA5-105	MTA5	105	65	

# TAKIM TUTUCULAR

## TOOL HOLDERS

**Yandan Kilitli Parmak Freze Tutucu (Weldon)**  
**Side Lock End Mill Holder (Weldon)**

DIN6359/1835B



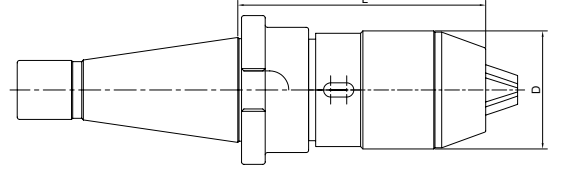
Takım No Order No	Model	D	D1	L	G
33301255SA	NT30-SLA12-55	12	40	55	M12
33301660SA	NT30-SLA16-60	16	45	60	M12
33302065SA	NT30-SLA20-65	20	50	65	M12
33302575SA	NT30-SLA25-75	25	50	75	M12
33401255SA	NT40-SLA12-55	12	40	55	M16
33401660SA	NT40-SLA16-60	16	45	60	M16
33402065SA	NT40-SLA20-65	20	50	65	M16
33402575SA	NT40-SLA25-75	25	50	75	M16
33403290SA	NT40-SLA32-90	32	60	90	M16
33404270SA	NT40-SLA42-70	42	80	70	M16
33501263SA	N50-SLA12-63	12	40	63	M24
33501663SA	NT50-SLA16-63	16	45	63	M24
33502063SA	NT50-SLA20-63	20	50	63	M24
33502575SA	NT50-SLA25-75	25	50	75	M24
33503280SA	NT50-SLA32-80	32	60	80	M24
335040100SA	NT50-SLA40-100	40	80	100	M24
335042100SA	NT50-SLA42-100	42	80	100	M24

# TAKIM TUTUCULAR

## TOOL HOLDERS

 APU Delik Pens Tutucu  
APU Drill Chuck Holder

DIN2080



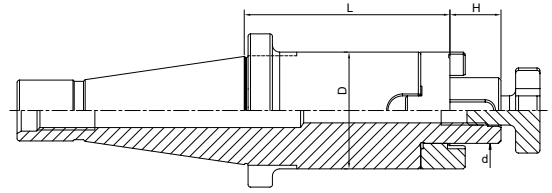
Takım No Order No	Model	Sıkma Aralığı Clamping Range	D	L	
				min	max
33300880A	NT30-APU08-80	1-8	36.3	75	82
333013100A	NT30-APU13-100	1-13	51.5	97	104.5
33400885A	NT40-APU08-85	1-8	36.3	79	86.5
334013110A	NT40-APU13-110	1-13	51.5	98	109
334016130A	NT40-APU16-130	3-16	58	116	130
335000895A	NT50-APU08-95	1-8	36.3	90	97.5
335013120A	NT50-APU13-120	1-13	51.5	109	120
335013180A	NT50-APU13-180	1-13	51.5	169	180
335016130A	NT50-APU16-130	3-16	58	116	130
335016190A	NT50-APU16-190	3-16	58	176	190

# TAKIM TUTUCULAR

## TOOL HOLDERS

 **Kombi Malafa**  
**Combi Shell Mill Holder**

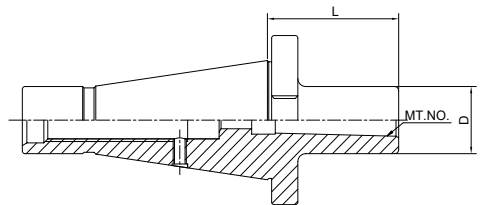
DIN6358



Takim No Order No	Model	d	D	L	A
33301635CS	NT30-SEMC16-35	16	32	17	35
33302235CS	NT30-SEMC22-35	22	40	19	35
33302735CS	NT30-SEMC27-35	27	48	21	35
33303250CS	NT30-SEMC32-50	30	58	24	50
33401652CS	NT40-SEMC16-52	16	32	17	52
3340225CS	NT40-SEMC22-52	22	40	19	52
33402752CS	NT40-SEMC27-52	27	48	21	52
33403252CS	NT40-SEMC32-52	32	58	24	52
33404052CS	NT40-SEMC40-52	40	70	27	52
33501655CS	NT50-SEMC16-55	16	32	17	55
3350255CS	NT50-SEMC22-55	22	40	19	55
33502755CS	NT50-SEMC27-55	27	48	21	55
33503255CS	NT50-SEMC32-55	32	58	24	55
33504055CS	NT50-SEMC40-55	40	70	27	55

 **Quick Change Tapping Chuck with Length Compensation**

DIN2080



Takim No Order No	Model	H	d	D	Kapasite Capacity
33400153	NT40-GR1-53	53	19	38	M3-M14
33400277	NT40-GR2-77	77	31	55	M5-M24
33500279	NT50-GR2-79	79	31	55	M5-M24





**EURLOY**

**HSK**

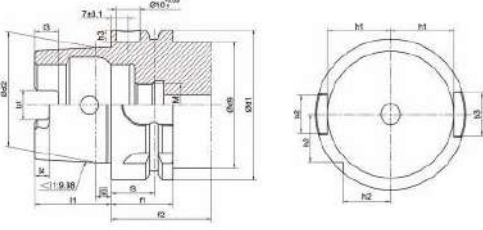


# TAKIM TUTUCULAR

## TOOL HOLDERS

**Standart Konik**  
**Taper Standard**

DIN2080



Model	d1	d2	d3	d4	d5	d6	d7	d8	l1	l2	l3	l4	l5	b1	b2	b3
HSK32A	32	24.007	17	20.5	19	26	37	4	16	3.2	35	20	16	7.05	7	9
HSK40A	40	30.007	21	25.5	23	34	45	4	20	4.0	35	20	16	8.05	9	9
HSK50A	50	38.009	26	32	29	42	59.3	7	25	5	42	26	18	10.54	12	12
HSK63A	63	48.010	34	40	37	53	72.3	7	32	6.3	42	26	18	12.54	16	16
HSK100A	100	75.013	53	63	58	88	109.75	7	50	10	42	29	20	20.02	20	20

Malzeme: Allied kasası sertleştirilmiş çelik,  
siyah yüzeyli ve hassas şekilde taşlanmış.  
Konik Tolerans: <AT3  
Sertlik: HRC 56-58  
Karbon Derinliği: 0.8mm±0.2mm  
Maksimum Tükenme: <0.005mm  
Yüzey Pürüzlülüğü: Ra>0.005mm  
Soğutma AD+B tipi isteğe göre yapılabilir.  
Sipariş verirken lütfen G6.3 veya G2.5 dengelemesini  
belirtin.  
Şaft gövdesi standardı: DIN69893-1

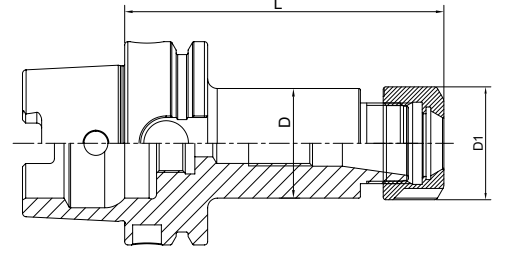
Material: Allied case hardened steel,  
black-finished and precisely grinded  
Taper Tolerance: <AT3  
Hardness: HRC 56-58  
Carbon Depth: 0.8mm±0.2mm  
Max Run Out: <0.005mm  
Surface Roughness: Ra<0.005mm  
Cooling AD+B type can be made by request  
When Order, please specify balancing  
G6.3 or G2.5  
Shank body standard: DIN69893-1

# TAKIM TUTUCULAR

## TOOL HOLDERS

**ER Pens Tutucu**  
**ER Collet Chuck**

DIN69893



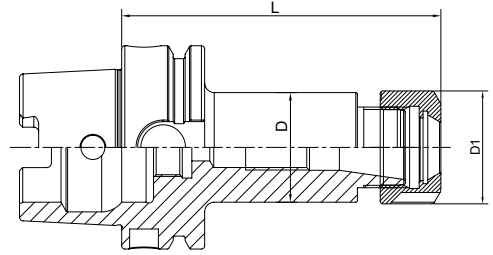
Takım No Order No	Model	Kapasite Capacity	Pens Collet	L1	D
88501680	HSK50A-ER16-80	0.5-10	ER16	80	28
88502080	HSK50A-ER20-80	1-13	ER20	80	34
88502580	HSK50A-ER25-80	1-16	ER25	80	42
885032100	HSK50A-ER32-100	1-20	ER32	100	50
					28
88631680	HSK63A-ER16-80	0.5-10	ER16	80	28
886316100	HSK63A-ER16-100	0.5-10	ER16	100	28
886316120	HSK63A-ER16-120	0.5-10	ER16	120	34
88632080	HSK63A-ER20-80	1-13	ER20	80	34
886320100	HSK63A-ER20-100	1-13	ER20	100	34
886320120	HSK63A-ER20-120	1-13	ER20	120	42
88632580	HSK63A-ER25-80	1-16	ER25	80	42
886325100	HSK63A-ER25-100	1-16	ER25	100	42
886325120	HSK63A-ER25-120	1-16	ER25	120	50
88633280	HSK63A-ER32-80	1-20	ER32	80	50
886332100	HSK63A-ER32-100	1-20	ER32	100	50
886332120	HSK63A-ER32-120	1-20	ER32	120	50
88634080	HSK63A-ER40-80	3-26	ER40	80	63
886340100	HSK63A-ER40-100	3-26	ER40	100	63
886340150	HSK63A-ER40-150	3-26	ER40	150	63

# TAKIM TUTUCULAR

## TOOL HOLDERS

### ER Pens Tutucu ER Collet Chuck

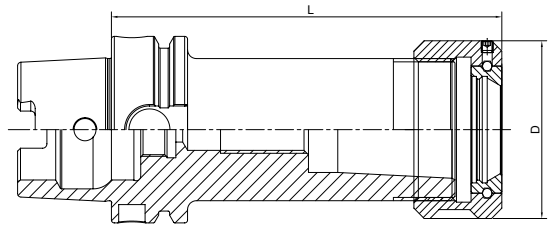
DIN69893



Takım No Order No	Model	Kapasite Capacity	Pens Collet	L1	D
8810016100	HSK100A-ER16-100	0.5-10	ER16	100	28
8810016160	HSK100A-ER16-180	0.5-10	ER16	160	28
8810020100	HSK100A-ER20-100	1-13	ER20	100	34
8810020160	HSK100A-ER20-160	1-13	ER20	160	34
8810025100	HSK100A-ER25-100	1-16	ER25	100	42
8810025160	HSK100A-ER25-160	1-16	ER25	160	42
8810032100	HSK100A-ER32-100	1-20	ER32	100	50
881032160	HSK100A-ER32-160	1-20	ER32	160	50
8810040100	HSK100A-ER40-100	3-26	ER40	100	63
8810040160	HSK100A-ER40-160	3-26	ER40	160	63

### Hassas Freze Tutucu Precision Milling Chuck

DIN69893



Takım No Order No	Model	D1	D	Sıkma Aralığı Clamping Range	L	L1
88501680C	HSK50A-SC16-80	16	54	3-16	80	54
88631680C	HSK63A-SC16-80	16	54	3-16	80	54
886316100C	HSK63A-SC16-100	16	54	3-16	100	74
88632085C	HSK63A-SC20-85	20	53	4-20	85	59
8810016115C	HSK100A-SC16-115	16	54	3-16	115	86
8810020115C	HSK100A-SC20-115	20	53	4-20	115	86

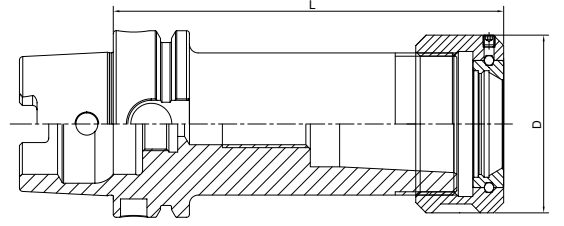
# TAKIM TUTUCULAR

## TOOL HOLDERS

### OZ Pens Tutucu OZ Collet Chuck



DIN69893

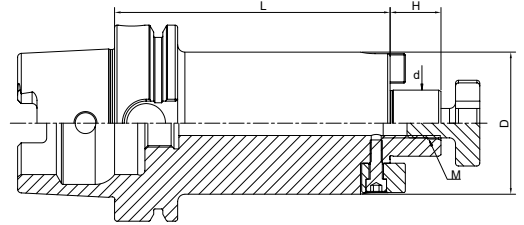


Takım No Order No	Model	Kapasite Capacity	D	A
885016900Z	HSK50-OZ16-90	2-16	43	90
8850251100Z	HSK-OZ25-110	2-25	60	110
8863161000Z	HSK63-OZ16-100	2-16	43	100
8863251000Z	HSK63-OZ25-100	2-25	60	100
8863321200Z	HSK63-OZ32-120	3-32	72	120
88100251100Z	HSK100-OZ25-110	2-16	43	110
88100251200Z	HSK100-OZ25-120	2-25	60	120
88100321300Z	HSK100-OZ32-130	3-32	72	130

### FMB Yüzey Frezeleme Tutucu FMB Face Mill Holder



DIN6357

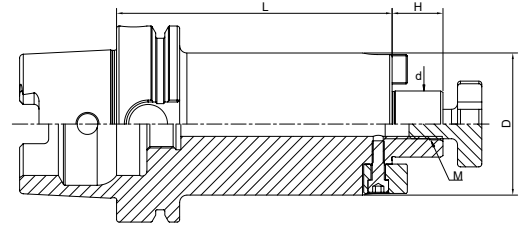


Takım No Order No	Model	d	D	L	A
88501650FB	HSK50-FMB16-50	16	38	17	50
88502260FB	HSK50-FMB22-60	22	48	19	60
88502760FB	HSK50-FMB27-60	27	58	21	60
88503260FB	HSK50-FMB32-60	32	78	24	60
88631650FB	HSK63-FMB16-50	16	38	17	50
886316100FB	HSK63-FMB16-100	16	38	17	100
88632250FB	HSK63-FMB2-50	22	48	19	50
886322100FB	HSK63-FMB22-100	22	48	19	100
88632760FB	HSK63-FMB27-60	27	58	21	60
886327100FB	HSK63-FMB27-100	27	58	21	100
88633260FB	HSK63-FMB32-60	32	78	24	60
886332100FB	HSK63-FMB32-100	32	78	24	100
88634060FB	HSK63-FMB40-60	40	88	27	60
886340100FB	HSK63-FMB40-100	40	88	27	100

# TAKIM TUTUCULAR

## TOOL HOLDERS

 FMB Yüzey Frezeleme Tutucu  
FMB Face Mill Holder



DIN6357

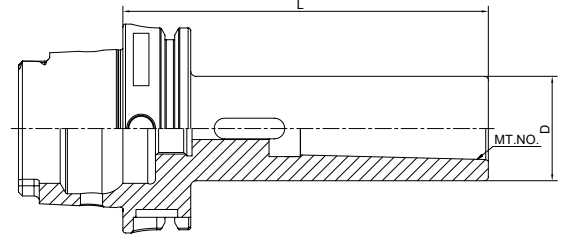
Takım No Order No	Model	d	D	L	A
88802250FB	HSK80-FMB22-50	22	48	19	50
88802750FB	HSK80-FMB27-50	27	58	21	50
88803260FB	HSK80-FMB32-60	32	78	24	60
88804060FB	HSK80-FMB40-60	40	88	27	60
881002250FB	HSK100-FMB22-50	22	48	19	50
881002750FB	HSK100-FMB27-50	27	58	21	50
881003250FB	HSK100-FMB32-50	32	78	24	50
881004060FB	HSK100-FMB40-60	40	88	27	60
881006070FB	HSK100-FMB60-70	60	130	40	70

# TAKIM TUTUCULAR

## TOOL HOLDERS

 MTA Morse Konik Adaptörü  
MTA Morse Taper Adapter


DIN6383



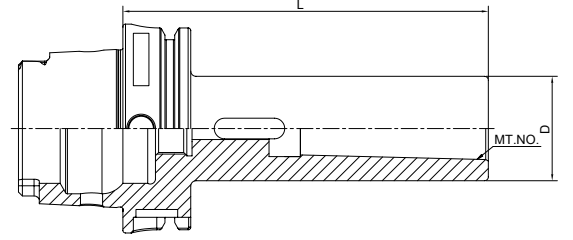
Takım No Order No	Model	MT.No	D	A
8850100MA1	HSK50-MTA1-100	MTA1	25	100
8850120MA2	HSK50-MTA2-120	MTA2	32	120
8850140MA3	HSK50-MTA3-140	MTA3	40	140
8863100MA1	HSK63-MTA1-100	MTA1	25	100
8863120MA2	HSK63-MTA2-120	MTA2	32	120
8880150MA3	HSK63-MTA3-140	MTA3	40	140
8863160MA4	HSK63-MTA4-160	MTA4	40	160
8880110MA1	HSK80-MTA1-110	MTA1	25	110
8880120MA2	HSK80-MTA2-120	MTA2	32	120
8880150MA3	HSK80-MTA3-150	MTA3	40	150
888070MA4	HSK80-MTA4-170	MTA4	48	170
88100110MA1	HSK100-MTA1-110	MTA1	25	110
88100120MA2	HSK100-MTA2-120	MTA2	32	120
88100150MA3	HSK100-ÖTA3-150	MTA3	40	150
88100170MA4	HSK100-MTA4-170	MTA4	48	170
88100200MA5	HSK100-MTA5-200	MTA5	63	200

# TAKIM TUTUCULAR

## TOOL HOLDERS

 MTB Morse Konik Adaptörü (civata)  
MTB Morse Taper Adapter (with drawbar)

DIN6364




Takım No Order No	Model	MT.No	D	A
8850100MB1	HSK50-MTB1-100	MTB1	25	100
8850120MB2	HSK50-MTB2-120	MTB2	32	120
8850140MB3	HSK50-MTB3-140	MTB3	40	140
8863100MB1	HSBK63-MTB1-100	MTB1	25	100
8863120MB2	HSK63-MTB2-120	MTB2	32	120
8863140MB3	HSK63-MTB3-140	MTB3	40	140
8863160MB4	HSK63-MTB4-160	MTB4	40	160
8880110MB1	HSK80-MTB1-110	MTB1	25	110
8880120MB2	HSK80-MTB2-120	MTB2	32	120
8880150MB3	HSK80-MTB3-150	MTB3	40	150
888070MB4	HSK80-MTB4-170	MTB4	48	170
88100110MB1	HSK100-MTB1-110	MTB1	25	110
88100120MB2	HSK100-MTB2-120	MTB2	32	120
88100150MB3	HSK100-MTB3-150	MTB3	40	150
88100170MB4	HSK100-MTB4-170	MTB4	48	170
88100200MB5	HSK100-MTB5-200	MTB5	63	200

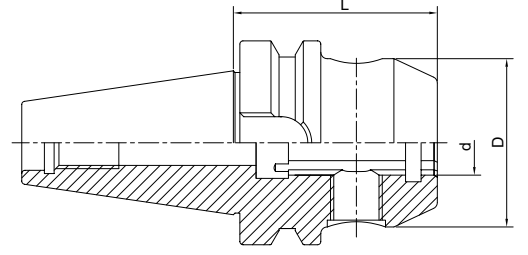


# TAKIM TUTUCULAR

## TOOL HOLDERS

 Yan Kilit Parmak Freze Tutucu  
Side Lock End Mill Holder


DIN6359  
1835B



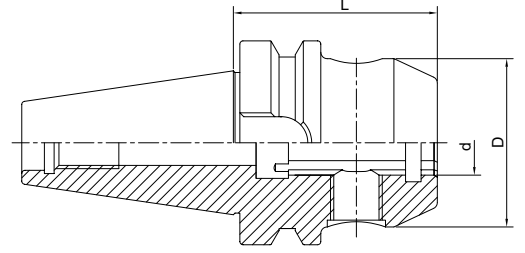
Takım No Order No	Model	D	C	G	C
88500680SA	HSK50A-SLA06-80	6	25	M6x1.0P	80
88500880SA	HSK50A-SLA08-80	8	28	M8x1.25P	80
88501080SA	HSK50A-SLA10-80	10	35	M10x1.5P	80
88501280SA	HSK50A-SLA12-80	12	42	M10x1.5P	80
88501690SA	HSK50A-SLA16-90	16	48	M10x1.5P	80
88502090SA	HSK50A-SLA20-90	20	52	M12x1.75P	80
88630680SA	HSK63A-SLA06-80	6	25	M6x1.0P	80
88630880SA	HSK63A-SLA08-80	8	28	M8x1.25P	80
88631080SA	HSK63A-SLA10-80	10	35	M10x1.5P	80
88631280SA	HSK63A-SLA12-80	12	42	M10x1.5P	80
886316100SA	HSK63A-SLA16-100	16	48	M10x1.5P	100
886320100SA	HSK63A-SLA20-100	20	52	M12x1.75P	100
886325110SA	HSK63A-SLA25-110	25	65	M12x1.75P	110
886332110SA	HSK63A-SLA32-110	32	72	M16x2.0P	110
881000880SA	HSK100A-SLA08-80	8	28	M6x1.0P	80
881001080SA	HSK100A-SLA10-80	10	35	M8x1.25P	80
881001280SA	HSK100A-SLA12-80	12	42	M10x1.5P	80
8810016100SA	HSK100A-SLA16-80	16	48	M10x1.5P	100
8810020100SA	HSK100A-SLA20-80	20	52	M10x1.5P	100
8810025100SA	HSK100A-SLA25-80	25	65	M12x1.75P	100
8810032100SA	HSK100A-SLA32-80	32	72	M12x1.75P	100

# TAKIM TUTUCULAR

## TOOL HOLDERS

 Yan Kilit Parmak Freze Tutucu  
Side Lock End Mill Holder

DIN6359  
1835B



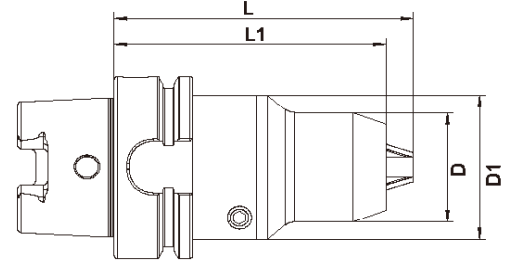
Takım No Order No	Model	d	D	A
88500680SB	HSK50-SLB06-80	6	25	80
88500880SB	HSK50-SLB08-80	8	28	80
88501080SB	HSK50-SLB10-80	10	35	80
88501290SB	HSK50-SLB12-90	12	42	90
8850169SB	HSK50-SKB16-90	16	48	90
88502080SB	HSK50-SLB20-80	20	52	80
88630680SB	HSK63-SLB06-80	6	25	80
88630880SB	HSK63-SLB08-80	8	28	80
88631080SB	HSK63-SLB10-80	10	35	80
88631290SB	HSK63-SLB12-90	12	42	90
88316100SB	HSK63-SLB16-100	16	48	100
886320100SB	HSK63-SLB20-100	20	52	100
886325110SB	HSK63-SLB25-110	25	65	110
886332110SB	HSK63-SLB32-110	32	72	110
881000890SB	HSK100-SLB08-90	8	28	90
881001090SB	HSK100-SLB10-90	10	35	90
8810012100SB	HSK100-SLB12-100	12	42	100
8810016100SB	HSK100-SLB16-100	16	48	100
8810020110SB	HSK100-SLB20-110	20	52	110
8810025120SB	HSK100-SLB25-120	25	65	120
8810032120SB	HSK100-SLB32-120	32	72	120
8810040120SB	HSK100-SLB40-120	40	80	120

# TAKIM TUTUCULAR

## TOOL HOLDERS

### APU Delik Pens Tutucu APU Drill Chuck Holder

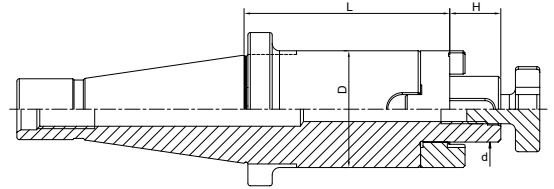
DIN69893



Takım No Order No	Model	Sıkma Aralığı Clamping Range	D	L Min
884008120A	HSK40A-APU08-120	1-8	36.3	120
885008120A	HSK50A-APU08-120	1-8	63.3	120
886308120A	HSK63A-APU08-120	1-8	36.3	120
886313150A	HSK63A-APU13-150	1-13	51.5	150
8863136155A	HSK63A-APU16-155	3-16	58.0	155
8810013155A	HSK100A-APU13-155	1-13	51.5	155
8810016160A	HSK100A-APU16-160	3-16	58.0	160

### Kombi Malafa Combi Shell Mill Holder

DIN6358



Takım No Order No	Model	d	D	L	A
88321655CS	HSK32-SEMC16-55	16	32	17	55
8832255CS	HSK32-SEMC22-55	22	40	19	55
88322765CS	HSK32-SEMC27-65	27	48	21	65
88401650CS	HSK40-SEMC16-50	16	32	17	50
88402250CS	HSK40-SEMC22-50	22	40	19	50
88402765CS	HSK40-SEMC27-65	27	48	21	65
88501650CS	HSK50-SEMC16-50	16	32	17	50
88502250CS	HSK50-SEMC22-50	22	40	19	50
88502765CS	HSK50-SEMC27-65	27	48	21	65
88631660CS	HSK63-SEMC16-60	16	32	17	60
886316100CS	HSK63-SEMC16-100	16	32	17	100
88632260CS	HSK63-SEMC22-60	22	40	19	60
886322100CS	HSK63-SEMC22-100	22	40	19	100
88632760CS	HSK63-SEMC27-60	27	48	21	60

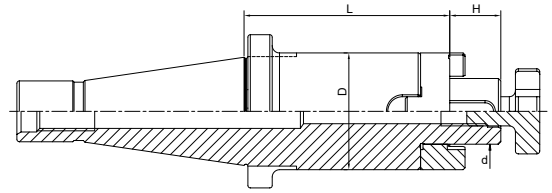
# TAKIM TUTUCULAR

## TOOL HOLDERS

**Kombi Malafa**  
Combi Shell Mill Holder



DIN6358

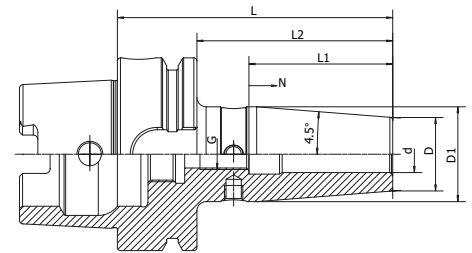


Takım No Order No	Model	d	D	L	A
88801660CS	HSK80-SEMC16-60	16	32	17	60
88802260CS	HSK80-SEMC22-60	22	40	19	60
88802760CS	HSK80-SEMC27-60	27	48	21	60
88803260CS	HSK80-SEMC32-60	32	58	24	60
88804070CS	HSK80-SEMC40-70	40	70	27	70
881001660CS	HSK100-SEMC16-60	16	32	17	60
881002260CS	HSK100-SEMC22-60	22	40	19	60
881002760CS	HSK100-SEMC27-60	27	48	21	60
881003260CS	HSK100-SEMC32-60	32	58	24	60
881004060CS	HSK100-SEMC40-60	40	70	27	60

**Kombi Malafa**  
Combi Shell Mill Holder




DIN6358



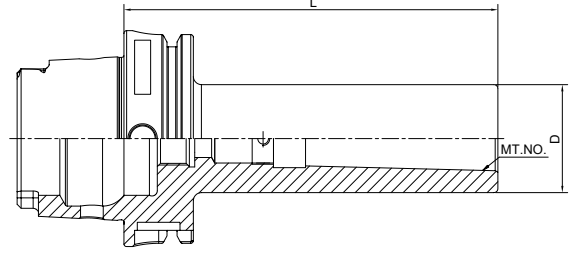
Takım No Order No	Model	d	d1	D	L
88400380S	HSK63-03-80	3	11	20	80
88400480S	HSK63-04-80	4	14	25	80
88400580S	HSK63-05-80	5	16	25	80
88400680S	HSK63-06-80	6	21	27	80
88400880S	HSK63-08-80	8	21	27	80
88401085S	HSK63-10-85	10	24	31	85
88401290S	HSK63-12-90	12	24	31	90
88401490S	HSK63-14-90	14	27	34	90
88401695S	HSK63-16-95	16	27	34	95
88401895S	HSK63-18-95	18	33	40	95
884020100S	HSK63-20-100	20	33	40	100
884025115S	HSK63-25-115	25	44	53	115
884032120S	HSK63-32-120	32	44	53	120

# TAKIM TUTUCULAR

## TOOL HOLDERS

 Uzunluk Dengelemeli Hızlı Değişirilebilir Kılavuz Çekme Aynası  
Quick Change Tapping Chuck with Length Compensation

DIN69893



Takım No Order No	Model	d	D	L	Kapasite Capacity
88500172Q	HSK50-GR1-72	19	38	72	M3-M14
88500211Q	HSK50-GR2-110	31	54	110	M5-M22
886301102Q	HSK63-GR1-102	19	38	102	M3-M14
886302140Q	HSK63-GR2-140	31	54	140	M5-M22
8810001112Q	HSK100-GR1-112	19	38	112	M3-M14
8810002148Q	HSK100-GR2-148	31	54	148	M5-M22



**EURLOY**

**CAT**

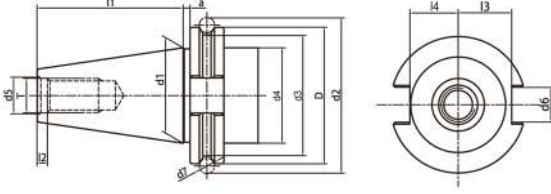


# TAKIM TUTUCULAR

## TOOL HOLDERS

**Standart Konik**  
**Taper Standard**

DIN2080



Model	D	d1	d2	d3	d4	d5	d6	d7	l1	l2	l3	l4	l5	T
CAT30	1.812	1.25	2.176	1.531	1.25	0.516	0.645	0.2813	1.875	0.188	0.735	0.64	0.44	1/2-12
CAT40	2.500	1.75	2.863	2.219	1.75	0.641	0.645	0.2813	2.687	0.188	0.985	0.89	0.44	5/8-11
CAT50	3.875	2.75	4.238	3.594	2.75	1.031	1.020	0.2813	4.000	0.250	1.485	1.39	0.44	1-8

Malzeme: Allied kasası sertleştirilmiş çelik, siyah yüzeyli ve hassas şekilde taşlanmış.  
Konik Tolerans: <AT3  
Sertlik: HRC 56-58  
Karbon Derinliği: 0.8mm±0.2mm  
Maksimum Tükenme: <0.005mm  
Yüzey Pürüzlülüğü: Ra>0.005mm  
Soğutma AD+B tipi isteğe göre yapılabilir.  
Sipariş verirken lütfen G6.3 veya G2.5 dengelemesini belirtin.  
Şaft gövdesi standardı: ANSI B5.50

Material: Allied case hardened steel, black-finished and precisely grinded  
Taper Tolerance: <AT3  
Hardness: HRC 56-58  
Carbon Depth: 0.8mm±0.2mm  
Max Run Out: <0.005mm  
Surface Roughness: Ra<0.005mm  
Cooling AD+B type can be made by request  
When Order, please specify balancing G6.3 or G2.5  
Shank body standard: ANSI B5.50

**Soğutma**  
**Cooling**


Form A: Soğutma kaynağı olmadan.  
Form A: Without cooling supply.

Form AD: Merkezi soğutma beslemesi.  
Form AD: Central cooling supply.

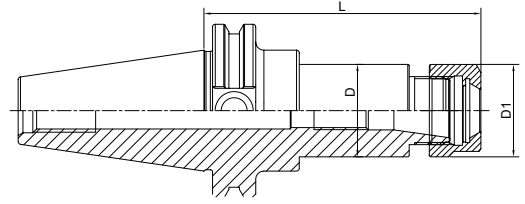
Form AD+B: Merkezi soğutma ve yaka boyunca dahili soğutma sıvısı.  
Form AD+B: Central cooling and internal coolant through the collar.

# TAKIM TUTUCULAR

## TOOL HOLDERS

 ER Pens Tutucu  
ER Collet Chuck

DIN6499



Takım No Order No	Model	D	d	Clamping Range
55401670	CAT40xER16-70	28	44.45	0.5-10
554016100	CAT40xER16-100	28	44.45	0.5-10
554016120	CAT40xER16-120	28	44.45	0.5-10
55402070	CAT40xER20-70	35	44.45	0.5-13
554020100	CAT40xER20-100	35	44.45	0.5-13
55402570	CAT40xER25-70	42	44.45	0.5-16
554025100	CAT40xER25-100	42	44.45	0.5-16
554025150	CAT40xER25-150	42	44.45	0.5-16
55403270	CAT40xER32-70	50	44.45	1-20
554032100	CAT40xER32-100	50	44.45	1-20
554032120	CAT40xER32-120	50	44.45	1-20
554032150	CAT40xER32-150	50	44.45	1-20
554040100	CAT40xER40-100	63	44.45	2-26
554040120	CAT40xER40-120	63	44.45	2-26

Takım No Order No	Model	D	d	Clamping Range
55501680	CAT50xER16-80	28	69.85	0.5-10
55502080	CAT50xER20-80	35	69.85	0.5-13
55502090	CAT50xER20-90	35	69.85	0.5-13
555020105	CAT50xER20-105	35	69.85	0.5-13
555020150	CAT50xER20-150	35	69.85	0.5-13
55502580	CAT50xER25-80	42	69.85	0.5-16
555025105	CAT50xER25-105	42	69.85	0.5-16
555025135	CAT50xER25-135	42	69.85	0.5-16
55503280	CAT50xER32-80	50	69.85	1-20
555032100	CAT50xER32-100	50	69.85	1-20
555032120	CAT50xER32-120	50	69.85	1-20
55504080	CAT50xER40-80	63	69.85	2-26
555040100	CAT50xER40-100	63	69.85	2-26
555040120	CAT50xER40-120	63	69.85	2-26

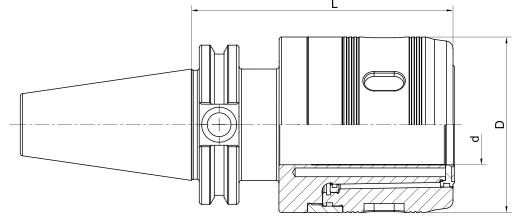


# TAKIM TUTUCULAR

## TOOL HOLDERS

**ER Pens Tutucu**  
**ER Collet Chuck**

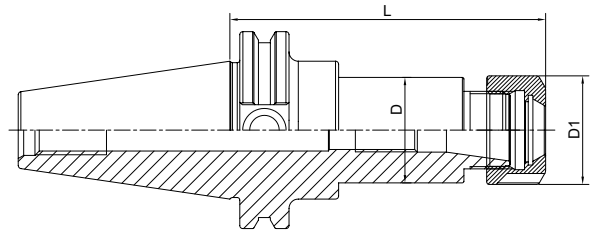
DIN6499



Takım No Order No	Model	d1	d2	L	Wt(kg)
55400.75"86C	CAT40-SC3/4"-3.385"	3/4"	2.17	3.39"	1.9
55400.75"105C	CAT40-SC3/4"-4.13"	3/4"	2.17	4.13"	2.1
55401.25"115C	CAT40-SC1-1/4"-4.53"	1.25"	2.87	4.53	2.4
55500.75"105C	CAT50-SC3/4"-4.13"	3/4"	2.17	4.13"	2.5
55501.25"105C	CAT50-SC1-1/4"-4.13"	1.25"	2.87	4.13"	2.8

**OZ Pens Tutucu**  
**OZ Collet Chuck**

DIN6391



Takım No Order No	Model	D1	L	L1	D	Pens Tipi Collet Type
554025 2.25"OZ	CAT40-OZ25-2.25"	1/8"-1"	2.25"	1.18"	2.36"	OZ25
554025 4.00"OZ	CAT40-OZ25-4.00"	1/8"-1"	4.00"	1.18"	2.36"	OZ25
554032 2.25"OZ	CAT40-OZ32-2.25"	1-4"-1-1/4"	2.25"	1.30"	2.83"	OZ32
554032 4.00"OZ	CAT40-OZ32-4.00"	1-4"-1-1/4"	4.00"	1.30"	2.83"	OZ32
555025 2.25"OZ	CAT50-OZ25-2.25"	1/8"-1"	2.25"	1.18"	2.36"	OZ25
555025 4.00"OZ	CAT50-OZ25-4.00"	1/8"-1"	4.00"	1.18"	2.36"	OZ25
555032 2.25"OZ	CAT50-OZ32-2.25"	1/4"-1-1/4"	2.25"	1.30"	2.83"	OZ32
555032 4.00"OZ	CAT50-OZ32-4.00"	1/4"-1-1/4"	4.00"	1.30"	2.83"	OZ32

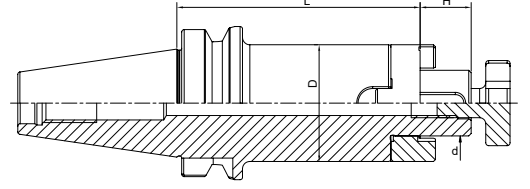
# TAKIM TUTUCULAR

## TOOL HOLDERS

### FMA Yüzey Frezeleme Tutucu

#### FMA Face Mill Holder

ANSI B5.50

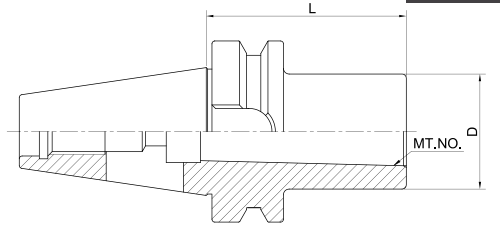


Takım No Order No	Model	D1	L1	H1	C1	W1
5540254L175FA	CAT40-FMA25.4-1.75"	25.4(1")	1.75"	17.5	2.362"	9.5(0.374")
55403175L2FA	CAT40-FMA31.75-2"	31.75(1.25")	2"	17.5	2.756"	12.7(0.5")
5540381L2FA	CAT40-FMA38.1-2"	38.1(1.5")	2"	23.8	3.346"	15.9(0.626")
5550254L175FA	CAT50-FMA25.4-1.75"	25.4(1")	1.75"	17.5	2.362"	9.5(0.374")
5550254L5FA	CAT50-FMA25.4-4"	25.4(1")	4"	17.5	2.362"	9.5(0.374")
555025L6FA	CAT50-FMA25.4-6"	25.4(1")	6"	17.5	2.362"	9.5(0.374")
55503175L175FA	CAT50-FMA31.75-1.75"	31.75(1.25")	1.75"	17.5	2.756"	12.7(0.5")
55503175L4FA	CAT50-FMA31.75-4"	31.75(1.25")	4"	17.5	2.756"	12.7(0.5")
55503175L6FA	CAT50-FMA31.75-6"	31.75(1.25")	6"	17.5	2.756"	12.7(0.5")
5550381L2FA	CAT50-FMA38.1-2"	38.1(1.5")	2"	23.8	3.346"	15.9(0.626")
5550381L4FA	CAT50-FMA38.1-4"	38.1(1.5")	4"	23.8	3.346"	15.9(0.626")
5550381L6FA	CAT50-FMA38.1-6"	38.1(1.5")	6"	23.8	3.346"	15.9(0.626")
5550508L2FA	CAT50-FMA50.8-2"	50.8(2")	2"	24	3.74"	19.05(0.75")
5550508L4FA	CAT50-FMA50.8-4"	50.8(2")	4"	24	3.74"	19.05(0.75")
5550508L6FA	CAT50-FMA50.8-6"	50.8(2")	6"	24	3.74"	19.05(0.75")
555047625L3FA	CAT50-FMA47.625-3"	47.625(1.875")	3"	32	5.26"	25.4(1")

### MTA Morse Adaptör Tutucu

#### MTA Morse Taper Adapter


DIN6383



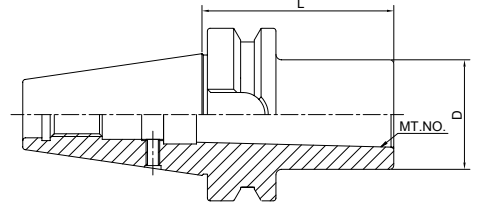
Takım No Order No	Model	MT.No	L	D	Wt(kg)
334045MA1	CAT40-MTA1-45	1	45	25	1.3
334063MA2	CAT40-MTA2-63	2	63	32	1.7
334075MA3	CAT40-ÖTA3-75	3	75	40	2
3340100MA4	CAT40-ÖTA4-100	4	100	48	2.5
335040MA1	CAT50-MTA1-40	1	40	25	4
335050MA2	CAT50-MTA2-50	2	50	32	4
3350135MA2	CAT50-MTA2-135	2	135	32	4.4
335063MA3	CAT50-MTA3-63	3	63	40	4.2
3350150MA3	CAT50-MTA3-150	3	150	40	4.7
335065MA4	CAT50-MTA4-65	4	65	48	4.3
335085MA4	CAT50-MTA4-85	4	85	48	4.8
3350105MA5	CAT50-MTA5-105	5	105	65	4.9

# TAKIM TUTUCULAR

## TOOL HOLDERS

 MTB Morse Adaptör Tutucu (civata)  
MTB Morse Taper Adapter (with drawbar)

DIN6364



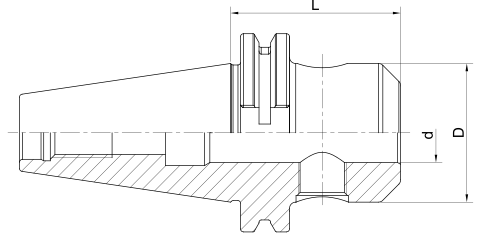
Takım No Order No	Model	MT.No	L	d	D	G	Wt(kg)
554050MB1	CAT40-MTB1-50	1	50	12.065	25	M6x1	1
554050MB2	CAT40-MTB2-50	2	50	17.78	32	M10x1.5	1.1
554070MB3	CAT40-MTB3-70	3	70	23.825	40	M12x1.75	1.2
5540095MB4	CAT40-MTB4-95	4	95	31.267	50	M16x2	1.3
554550MB1	CAT45-MTB1-50	1	50	12.065	25	M6x1	2.4
554560MB2	CAT45-MTB2-60	2	60	17.78	32	M10x1.5	2.4
554565MB3	CAT45-MTBB3-65	3	65	23.825	40	M12x1.75	2.4
554570MB4	CAT45-MTB4-70	4	70	31.267	50	M16x2	2.5
555050MB1	CAT50-MTB1-50	1	50	12.065	25	M6x1	3.9
555060MB2	CAT50MTB2-60	2	60	17.78	32	M10x1.5	3.9
555065MB3	CAT50-MTB3-65	3	65	23.825	40	M12x1.75	3.9
555070MB4	CAT50-MTB4-70	4	70	31.267	50	M16x2	3.9

# TAKIM TUTUCULAR

## TOOL HOLDERS

**MTB Morse Adaptör Tutucu (civata)**  
**MTB Morse Taper Adapter (with drawbar)**

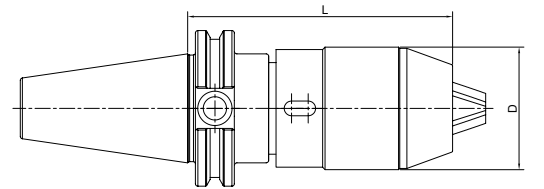
DIN6364



Takım No Order No	Model	D	C	L
55400650SA	CAT40-SLA6-50	6	25	50
5540085SA	CAT40-SLA8-50	8	28	50
55401050SA	CAT40-SLA10-50	10	35	50
55401250SA	CAT40-SLA12-50	12	42	50
55401663SA	CAT40-SLA16-63	16	48	63
55402063SA	CAT40-SLA20-63	20	52	63
554025100SA	CAT40-SLA25-100	25	65	100
554032100SA	CAT40-SLA32-100	32	72	100
55500663SA	CAT50-SLA6-63	6	25	63
55500863SA	CAT50-SLA863	8	28	63
55501063SA	CAT50-SLA10-63	10	35	63
55501263SA	CAT50-SLA12-63	12	42	63
5550663SA	CAT50-SLA16-63	16	48	63
55502063SA	CAT50-SLA20-63	20	52	63
55502580SA	CAT50-SLA25-80	25	65	80
555032100SA	CAT50-SLA32-100	32	72	100
555040120SA	CAT50-SLA40-120	40	90	120
555050130SA	CAT50-SLA50-130	50	100	130

**MTB Morse Adaptör Tutucu (civata)**  
**MTB Morse Taper Adapter (with drawbar)**

DIN6364



Takım No Order No	Model	Clamping Range	D	L	
				Min	Max
55400865A	CAT40-APU08	1-8	36.3	65	76.5
55401388A	CAT40-APU13	1-13	51.5	88	99
554016106A	CAT40-APU16	3-16	58	106	120
55500870A	CAT50-APU08	1-8	36.3	70	77.5
55501389A	CAT50-APU13	1-13	51.5	89	100
55501696A	CAT50-APU16	3-16	58	96	110



**EURLOY**


**AKSESUAR**

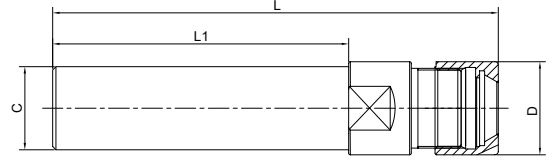
***ACCESSORY***



## TAKIM TUTUCULAR

### TOOL HOLDERS


 Düz Şaft Pens Aynası  
Straight Shank Collet Chuck

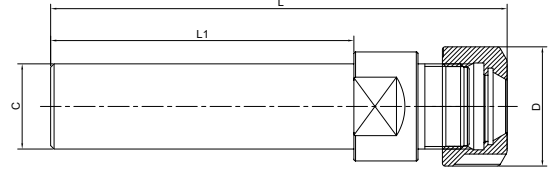


Takım No Order No	Model	C	l1	Wt(kg)
661008M100	C10-ER8M-100	10	100	0.07
661211M100	C12-ER11M-100	12	100	0.16
661611M100	C16-ER11M-100	16	100	0.18
661616M100	C16-ER16M100	16	100	0.19
662016M100	C20-ER16M-100	20	100	0.26
662020M100	C20-ER20M-100	20	100	0.32

## TAKIM TUTUCULAR

### TOOL HOLDERS


 Düz Şaft Pens Aynası  
Straight Shank Collet Chuck

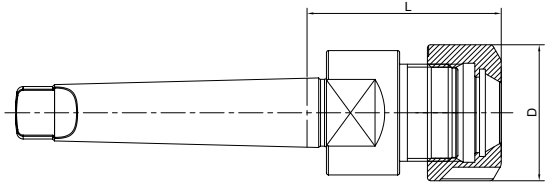


Takım No Order No	Model	C	l1	Wt(kg)
661611050	C16-ER11A-50	16	50	0.13
661611100	C16-ER11A-100	16	100	0.19
661616100	C16A-ER16A-100	16	100	0.2
661616150	C16A-ER16A-150	16	150	0.24
662016050	C20-ER16A-50	20	50	0.18
662016100	C20-ER16A-100	20	100	0.27
662016150	C20-ER16A-150	20	150	0.37
662020050	C20A-ER20A-50	20	50	0.22
662020100	C20A-ER20A-100	20	100	0.38
662025050	C20-ER25-50	20	50	0.39
662025100	C20-ER25-100	20	100	0.41
662516100	C25-ER16A-100	25	100	0.45
662516150	C25-ER16A-150	25	150	0.56
662520100	C25-ER20A-100	25	100	0.46
662520150	C25-ER20A-150	25	150	0.58
662525100	C25-ER25-100	25	100	0.47
662525150	C25-ER25-150	25	150	0.58
662532100	C25-ER32-100	25	100	0.6
663225100	C32-ER25-100	32	100	0.7
663232100	C32-ER32-100	32	100	0.8
663232150	C32-ER32-150	32	150	1.3
663240100	C32-ER40-100	32	100	2.4
664032100	C40-ER32-100	40	100	1.7
664040100	C40-ER40-100	40	100	1.9

# TAKIM TUTUCULAR

## TOOL HOLDERS

 Morse Konik ER Pens Tutucu  
Morse Taper ER Collet Chuck




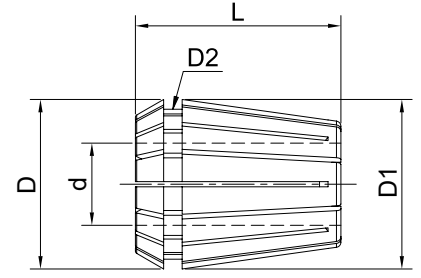
Takim No Order No	Model	L	I	D	Drawbar Thread
7708M1	MT1-ER8	80	25	12	M6
7708M2	MT2-ER8	91	25	12	M10
7711M1	MT1-ER11	85	30	19	M6
7711M2	MT2-ER11	96	30	19	M10
7711M3	MT3-ER11	119	30	19	M12
7716M1	MT1-ER16	95	40	28	M6
7716M2	MT2-ER16	106	40	28	M10
7716M3	MT3-ER16	129	40	28	M12
7720M1	MT1-ER20	95	40	35	M6
7720M2	MT2-ER20	106	40	35	M10
7720M3	MT3-ER20	126	40	35	M12
7725M1	MT1-ER25	95	37	42	M6
7725M2	MT2-ER25	103	37	42	M10
7725M3	MT3-ER25	123	37	42	M12
7725M4	MT4-ER25	145	37	42	M16
7725M2	MT2-ER25	103	37	42	M10
7732M2	MT2-ER32	116	50	50	M10
7732M3	MT3-ER32	136	50	50	M12
7732M4	MT4-ER32	163	50	50	M16
7740M3	MT3-ER40	152	66	63	M12
7740M4	MT4-ER40	174	66	63	M16



## TAKIM TUTUCULAR

### TOOL HOLDERS


 ER Pens Tutucu  
ER Collet Chuck



Model	d	D	D1	D2	L	Collapsible Capacity
ER8	1.0-5.0	8	8.45	6.5	13.5	0.5
ER11	1.0-7.0	11	11.5	9.5	18	0.5
ER16	1.0-2.5	16	17	13.8	27.5	0.5
ER16	2.5-10.0	16	17	13.8	27.5	1.0
ER20	1.0-2.5	20	21	17.4	31.5	0.5
ER20	2.05-20.13	20	21	17.4	31.5	1.0
ER25	1.0-2.5	25	26	22	34	0.5
ER25	2.5-16.0	25	26	22	34	1.0
ER32	2.0-2.5	32	33	29.2	40	0.5
ER32	2.5-20.0	32	33	29.2	40	1.0
ER40	3.0-26.0	40	41	36.2	46	1.0

Sipariş Örneği: CER32080

Order Example: CER32120

 Inç Ölçüsü  
Inch Size

Model	d	D	D1	D2	L
ER11	1/32-17/64	11	11.5	9.5	18
ER16	1/32-3/8	16	17	13.8	27.5
ER20	1/32-33/64	20	21	17.4	31.5
ER25	3/64-5/8	25	26	22	34
ER32	1/16-25/32	32	33	29.2	40
ER40	1/8-1"	40	41	36.2	46

Sipariş Örneği: CER321/8

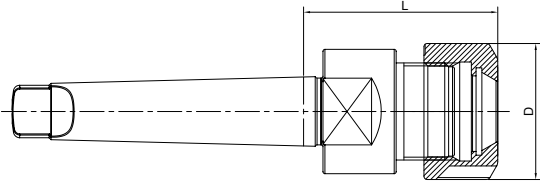
Order Example: CER3217/64

# TAKIM TUTUCULAR

## TOOL HOLDERS

**ER Pens Tutucu**  
**ER Collet Chuck**

DIN6499B



d	L	Sapma Toleransi Run out Tolerance		
		DIN6499B	Standard	UP
1.0-1.6	6	0.015	0.015	0.01
1.6-3.0	10	0.015	0.015	0.01
3.0-6.0	16	0.015	0.015	0.01
6.0-10.0	25	0.015	0.01	0.005
10.0-18.0	40	0.02	0.01	0.005
18.0-26.0	50	0.02	0.01	0.005
26.0-36.0	60	0.025	0.015	0.01

**ER Pens Seti**  
**ER Collet Set**

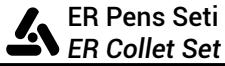


Takım No Order No	Model	Boyut Size	PCS/SET
SER0809	ER8-9PCS	1, 1.5, 2, 2.5, 3, 3.5, 4, 4.5, 5	9
SER0806I	ER8-6PCS(inch)	1/32, 1/16, 3/32, 1/8, 5/32, 3/16	8

Takım No Order No	Model	Boyut Size	PCS/SET
SER1107	ER11-7PCS	1, 2, 3, 4, 5, 6, 7	7
SER1109	ER11-9PCS	3, 3.5, 4, 4.5, 5, 5.5, 6, 6.5, 7	9
SER1113	ER11-13PCS	1, 1.5, 2, 2.5, 3, 3.5, 4, 4.5, 5, 5.5, 6, 6.5, 7	13
SER1108I	ER11-8PCS(inch)	1/32, 1/16, 3/32, 1/8, 5/32, 3/16, 7/32, 1/4	8

# TAKIM TUTUCULAR

## TOOL HOLDERS



DIN6499B



Takım No Order No	Model	Boyut Size	PCS/SET
SER1608	ER16-8PCS	3, 4, 5, 6, 7, 8, 9, 10,	8
SER1610	ER16-10-PCS	1, 2, 3, 4, 5, 6, 7, 8, 9, 10,	10
SER1612	ER16-12PCS	1, 1.5, 2, 2.5, 3, 4.5, 6, 7, 8, 9, 10	12
SER1605I	ER16-5PCS(inch)	1/8, 5/32, 3/16, 7/32, 1/4, 5/16, 3/8	5
SER1608I	ER16-8PCS(inch)	1/8, 5/32, 3/16, 7/32, 1/4, 5/16, 11/32, 3/8	8
SER1612I	ER16-12PCS(inch)	1/32, 1/16, 3/32, 1/8, 5/32, 3/16, 7/32, 1/4, 9/32, 5/16, 11/32, 3/8	12

Takım No Order No	Model	Boyut Size	PCS/SET
SER2011	ER20--11PCS	3, 4, 5, 6, 7, 8, 9, 10, 11, 12, 13	11
SER2013	ER20-13PCS	1, 2, 3, 4, 5, 6, 7, 8, 9, 10, 11, 12, 13,	13
SER2011I	ER20-11PCS(inch)	1/8, 5/32, 3/16, 7/32, 1/4, 9/32, 5/16, 11/32, 3/8, 7/16, 1/2	11
SER2014I	ER20-14PCS(inch)	3/32, 1/8, 5/32, 3/16, 7/32, 1/4, 9/32, 5/16, 11/32, 3/8, 13/32,	14
SER2016I	ER20-16PCS(inch)	1/32, 1/16, 3/32, 1/8, 5/32, 3/16, 7/32, 1/4, 9/32, 5/16, 11/32,3/8, 13/32, 7/16, 15/32,1/2	16

Takım No Order No	Model	Boyut Size	PCS/SET
SER2514	ER25-14PCS	3, 4, 5, 6, 7, 8, 9, 10, 11, 12, 13, 14, 15, 16	14
SER2515	ER25-15PCS	2, 3, 4, 5, 6, 7, 8, 9, 10, 11, 12, 13, 14, 15, 16	15
SER2509I	ER25-9PCS(inch)	1/8, 3/16, 1/4, 5/16, 3/8, 7/16, 1/2, 9/16, 5/8	9
SER2518I	ER25-18PCS(inch)	3/32, 1/8, 5/32, 3/16, 7/32, 1/4,9/32, 5/16, 11/32, 3/8, 13/3, 27/16, 15/32, 1/2, 17/32, 9/16, 5/8	18

# TAKIM TUTUCULAR

## TOOL HOLDERS

### Düz Şaftlı Pens Straight Shank Collet



Takım No Order No	D	d	L
SC16	16	3, 4, 5, 6, 8, 10, 12	45
SC20	20	3, 4, 5, 6, 8, 10, 12, 14, 16	50
SC22	22	3, 4, 5, 6, 8, 10, 12, 14, 16	50
SC25	25	3, 4, 5, 6, 8, 10, 12, 14, 16, 18, 20	60
SC32	32	3, 4, 5, 6, 8, 10, 12, 14, 16, 18, 20, 25	65
SC40	40	6, 8, 10, 12, 14, 16, 18, 20, 25, 28, 30, 32,	80
SC42	42	3, 4, 5, 6, 8, 10, 12, 14, 16, 18, 20 22, 24, 25, 28, 30, 32	80

### EOC Pens EOC Collet

DIN6388A



Model	d	D	D1	L	L1	L2	L3
EOC 6A	1-6	10	11.5	21	3.5	0.5	4
EOC 8A	1-8	12.65	14.5	26	4	0.8	4.5
EOC 10A	1-10	15.15	17.2	30	4.5	0.8	4.5
EOC 12A	1-12	17.75	19.8	34	5	1.1	4.5
EOC 16A	2-16	22.65	25.5	40	5.5	1.2	5.5
EOC 20A	2-20	27.4	29.8	45	6	1.35	6
EOC 25A	2-25	32.9	35.05	52	6	1.4	6
EOC 32A	4-32	41.3	43.7	60	6	1.45	7
EOC 40A	6-40	49.7	52.2	68	6	1.45	8
EOC 50A	8-50	61.6	63.8	80	7	1.55	9

# TAKIM TUTUCULAR

## TOOL HOLDERS

### BT Çekme Saplama

#### BT Pull Stud

MAS403-1982



Model	D	D1	D2	M	L	L1	L2	H	H1	Ø
BT30	12.5	7	11	M12	43	23	18	5	2.5	30°
BT40	17	10	15	M16	60	35	28	6	3	45°
BT50	25	17	23	M24	85	45	35	10	5	60°
										90°

Sipariş Örneği: PBT3045  
Order Example: PBT4060  
For Collant Type PBT4045C

### SK Çekme Saplama

#### SK Pull Stud

DIN69872



Takım No Order No	Model	D	D1	D2	M	L	L1	L2
PSK30A/B	SK-30A(B)	13	9	13	M12	44	24	19
PSK40A/B	SK-40A(B)	17	14	19	M16	54	26	20
PSK50A/B	SK-50A(B)	25	21	28	M24	74	34	25

Sipariş Örneği: PSK40A  
Order Example: PSK50B

### ISO7388 Çekme Saplama

#### ISO7388 Pull Stud

ISO7388



Takım No Order No	Model	d3	d2	d1	d	g	l	t
P738840A	DIN7388-40A	23	17	14	19	M16	54	7.5
P738850A	DIN7388-50A	36	25	21	28	M24	74	11.5
P738840B	DIN7388-40B	22.5	17	12.9	18.9	M16	44.5	7.5
P738850B	DIN7388-50B	36	25	19.6	29.1	M24	65.5	11.5

### CAT Çekme Saplama

#### CAT Pull Stud



Model	Type	Ø	d2	L	B	C	E	F
CAT40-A	A	5/8"-11	45	1.5	0.74	0.64	0.44	0.49
CAT50-A	A	1"-8	45	2.3	1.14	1.64	0.7	0.82
CAT40-B	B	5/8"-11	45/60/90	2.13	0.59	1.27	0.99	0.393
CAT50-B	B	1"-8	45/60/90	3.07	0.906	1.772	1.378	0.669

Sipariş Örneği: PCAT4045A  
Order Example: PCAT4060B

# TAKIM TUTUCULAR

## TOOL HOLDERS

### Mazak Çekme Saplaması

#### Mazak Pull Stud



Takım No Order No	Model	L1	L2	D1	D2	D3	D4	D5	W	G
PBTM40	Marzak-BT40	44.1	19.1	18.8	12.45	22	17	7	19	M16
PBTM50	Marzak-BT50	65.2	25.2	29	20.83	36	25	10	30	M24

Takım No Order No	Model	D	D1	D2	D3	L	L1	L2	M
PCATM40	Marzak-CAT40	22	17	18.79	12.5	41.25	16.25	11.17	M16
PCATM50	Marzak-CAT50	35.6	25	28.95	20.82	65.4	25.4	17.78	M24

### Mazak Çekme Saplaması

#### Mazak Pull Stud



Takım No Order No	Model	M	d1	d2	d3	d4	I3	I2	I1
PNT40	NT40	M16	25	21.2	17	7	13.6	25.1	53
PNT50	NT50	M24	39.6	32	25	7	13.3	25.1	65.1

### ER Pens Kapağı

#### ER Clamping Nut

Takım No Order No	Model	D(mm)	d1(mm)	L(mm)	T	Wt(kg)
NER16UM	ER16-UM	32	26	17	M22x1.5	0.05
NER20UM	ER20-UM	35	29	19	M25x1.5	0.1
NER25UM	ER25-UM	42	36	20	M32x1.5	0.14
NER32UM	ER32-UM	50	44	22.5	M40x1.5	0.2
NER40UM	ER40-UM	63	57	25.5	M50x1.5	0.3
NER50UM	ER50-UM	78	71	35.5	M64x2	0.5



Takım No Order No	Model	D(mm)	d1(mm)	L(mm)	T	Wt(kg)
NER11A	ER11-A	19	17	11.3	M14x0.75	0.005
NER16A	ER18-A	28	25	17.5	M22x1.5	0.01
NER20A	ER20-A	34	30	19	M25x1.5	0.05



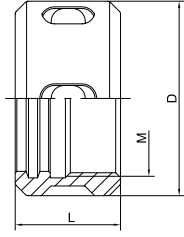
Takım No Order No	Model	D(mm)	d1(mm)	L(mm)	T	Wt(kg)
NER08M	ER8-M	12	10	10	M10x0.75	0.005
NER11M	ER11-M	16	12	12	M13x0.75	0.01
NER16M	ER16-M	22	17.2	18	M19x1	0.05
NER20M	ER20-M	28	22.5	19	M24x1	0.05
NER25M	ER25-M	35	28.6	20	M30x1	0.08



# TAKIM TUTUCULAR

## TOOL HOLDERS

### EOC Pens Kapağı EOC Clamping Nut



Takım No Order No	Model	D(mm)	L(mm)	T
NEOC06	EOC6	18	14	M14x1
NEOC08	EOC8	26	19	M20x1.5
NEOC10	EOC10	30	19	M22x1.5
NEOC12	EOC12	35	20	M27x1.5
NEOC16	EOC16	43	24	M33x1.5
NEOC20	EOC20	50	28	M42x2
NEOC25	EOC25	60	30	M48x2
NEOC32	EOC32	72	33.5	M60x2.5
NEOC40	EOC40	85	37	M68x2.5
NEOC50	EOC50	100	43	M80x2.5

### SK Kapağı SK Nut

Takım No Order No	Model	d	D	L	T
NSK06	SK06	18.1	20	15	M15.5x1
NSK10	SK10	25.4	28	17	M21.5x1
NSK18	SK16	35	40	24	M32x1.5
NSK20	SK20	43	48	27	M40x1.5
NSK25	SK25	50	55	30	M45x1.5

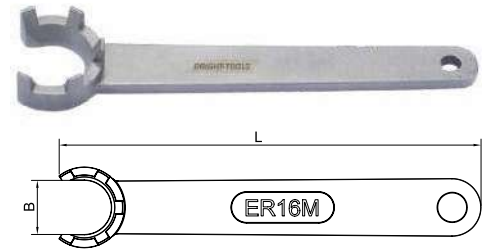
### ER Anahtar ER Spanner

Takım No Order No	Model	B	L	Clamping Nut
WER11A	ER11-A	17	110	ER11-A
WER16A	ER16-A	25	120	ER16-A
WER20A	ER20-A	30	130	ER20-A



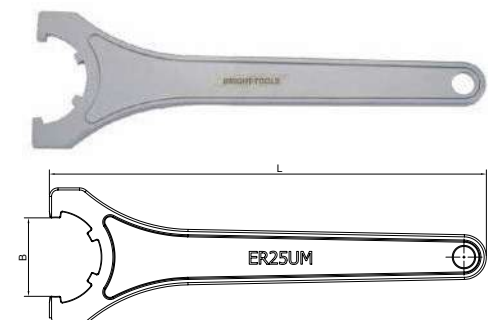
### Mini

Takım No Order No	Model	B	L	Clamping Nut
WER08M	ER8-M	7.5	70	ER8-M
WER11M	ER11-M	11	90	ER11-M
WER16M	ER16-M	15	110	ER16-M
WER20M	ER20-M	19.5	120	ER20-M
WER25M	ER25-M	25	130	ER25-M




### UM

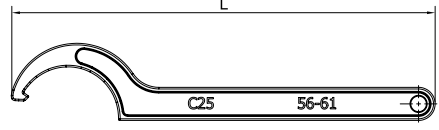
Takım No Order No	Model	B	L	Clamping Nut
WER16UM	ER16-UM	26	180	ER16-UM
WER20UM	ER20-UM	30	190	ER20-UM
WER25UM	ER25-UM	37	210	ER25-UM
WER32UM	ER32-UM	46.5	250	ER32-UM
WER40UM	ER40-UM	58	290	ER40-UM
WER50UM	ER50-UM	74	350	ER50-UM



# TAKIM TUTUCULAR

## TOOL HOLDERS

 Kanca Anahtarlı Çekiç  
Hook Spanner Wrench



Takım No Order No	Model	B	Size	Clamping Nut
WER25C	ER25-C	168	38-42	ER25-UM
WER32C	ER32-C	190	45-52	ER32-UM
WER40C	ER40-C	210	55-63	ER40-UM
WER50C	ER50-C	240	78-85	ER50-UM

Takım No Order No	Model	L(mm)	Dia of Nut(mm)
WEOC06	EOC06	90	18-21
WEOC08	EOC08	125	22-26
WEOC10	EOC10	140	28-32
WEOC12	EOC12	154	34-36
WEOC16	EOC16	168	38-42
WEOC20	EOC20	190	45-52
WEOC25	EOC25	210	55-62
WEOC32	EOC32	230	68-72
WEOC40	EOC40	240	78-85
WEOC50	EOC50	250	100-110

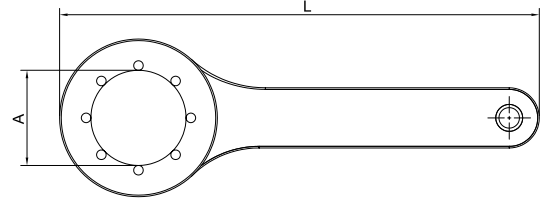
Takım No Order No	Model	L(mm)	Dia of Nut(mm)
WC20	SC20	55-62	214
WC22	SC22	55-62	214
WC25	SC25	55-62	214
WC32	SC32	68-72	235
WC42	SC42	78-85	261




## TAKIM TUTUCULAR

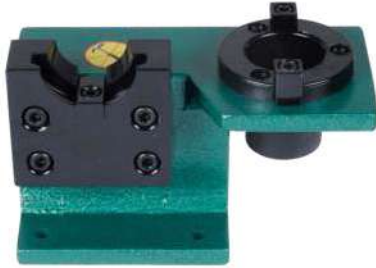
### TOOL HOLDERS

 SK Bilyalı Anahtar  
SK Ball Spanner



Takım No Order No	Model	D	L
WSK06	SK06	19.5	120
WSK10	SK10	27.5	130
WSK16	SK16	40	193
WSK20	SK20	48	200
WSK25	SK25	55	210


 Takım Tutucu Kilit Mekanizması  
Tool Holder Locking Device

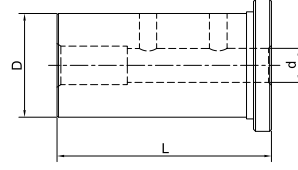


Order No	Type of Tool Holder	Outsize(mm)	Wt(kg)
DBT30	BT30	205x98.5x128	3.7
DBT40	BT40	205x98.5x128	3.8
DBT50	BT50	275x150x198	11.4
DSK30	DIN69871.30	205x98.5x128	3.7
DSK40	DIN69871.40	205x98.5x128	3.8
DSK50	DIN69871.50	275x150x198	11.4
DCAT30	CAT30	205x98.8x128	3.7
DCAT40	CAT40	205x98.5x128	3.8
DCAT50	CAT50	275x150x198	11.4

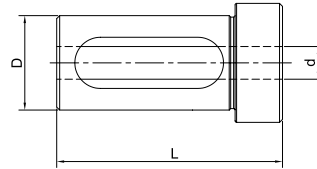
## TAKIM TUTUCULAR

### TOOL HOLDERS

 Delme Çubuğu Tutucu için Redüksiyon Kılıfı  
Reduction Sleeve for Broing Bar Holder



Takım No Order No	Model	d	D	L
SL2506	25-06	6	25	46
SL2508	25-08	8	25	46
SL2510	25-10	10	25	46
SL2512	25-12	12	25	46
SL3206	32-06	6	32	56
SL3208	32-08	8	32	56
SL3210	32-10	10	32	56
SL3212	32-12	12	32	56
SL4006	40-06	6	40	71
SL4008	40-08	8	40	71
SL4010	40-10	10	40	71
SL4012	40-12	12	40	71

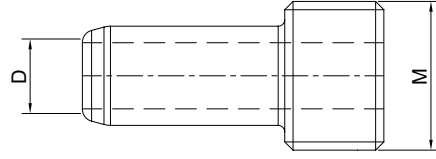


Takım No Order No	Model	d	D	L
SL2516	25-16	16	25	46
SL2520	25-20	20	25	46
SL3216	32-16	16	32	56
SL3220	32-20	20	32	56
SL3225	32-25	25	32	56
SL4016	40-16	16	40	71
SL4020	40-20	20	40	71
SL4025	40-25	25	40	71
SL4032	40-32	32	40	71

# TAKIM TUTUCULAR

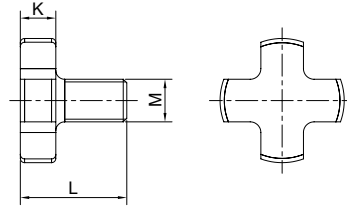
## TOOL HOLDERS

### HSK Soğutma Tüpü HSK Coolant Tube



Takım No Order No	Model	d	D	L
CT32	HSK32	6	M10x1	26.0
CT40	HSK40	8	M12x1	29.5
CT50	HSK50	10	M16x1	33.0
CT63	HSK63	12	M18x1	34.5
CT80	HSK80	14	M20x1.5	40.0
CT100	HSK100	16	M24x1.5	44.0

### Tutma Vidası Retaining Screw



Metric

Takım No Order No	Size	M	D	K	L
RS16	16	M8x1.25	20	6	16
RS22	22	M10x1.50	28	7	18
RS27	27	M12x1.75	35	8	22
RS32	32	M16x2.00	42	9	26
RS40	40	M20x2.50	52	10	30
RS50	50	M24x3.00	63	12	36
RS60	60	M30x3.50	75	14	45

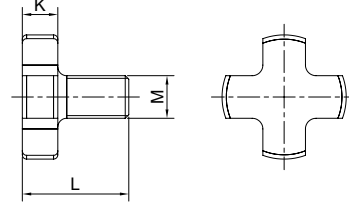
Inch

Takım No Order No	Size	M	D	K	L
RS1/2"	1/2"	1/4"-28UNF	0.66	0.34	0.66
RS3/4"	3/4"	3/8"-24UNF	0.88	0.38	0.68
RS1"	1"	1/2"-20UNF	1.19	0.38	0.81
RS1-1/4"	1-1/4"	5/8"-18UNF	1.50	0.50	1.04
RS1-1/2"	1-1/2"	3/4"-16UNF	1.88	0.50	1.02
RS2"	2"	1"-14UNF	2.50	0.50	1.04

## TAKIM TUTUCULAR

### TOOL HOLDERS

 Soğutma İçin Delikli Tutma Vidası  
Retaining Screw with Drill Trough for Collant



Metric

Takım No Order No	Size	M	D	K	L
RS16	16	M8x0.25	20	6	16
RS22	22	M10x1.50	28	7	18
RS27	27	M12x1.75	35	8	22
RS32	32	M16x2.00	42	9	26
RS40	40	M20x2.50	52	10	30
RS50	50	M24x3.00	63	12	36
RS60	60	M30x3.50	75	14	45

Inch

Takım No Order No	Size	M	D	K	L
RS1/2"	1/2"	1/4"-28UNF	0.66	0.34	0.66
RS3/4"	3/4"	3/8"-24UNF	0.88	0.38	0.68
RS1"	1"	1/2"-20UNF	1.19	0.38	0.81
RS1-1/4"	1-1/4"	5/8"-18UNF	1.50	0.50	1.04
RS1-1/2"	1-1/2"	3/4"-16UNF	1.88	0.50	1.02
RS2"	2"	1"-14UNF	2.50	0.50	1.04



**EURLOY**

**TEKNİK BİLGİLER**

***TECHNICAL DATA***

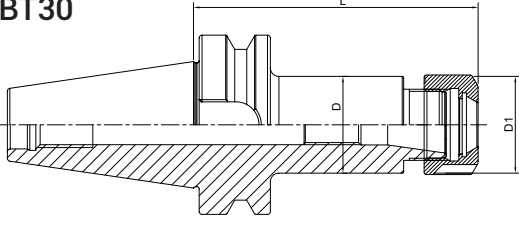
# TAKIM TUTUCULAR

## TOOL HOLDERS

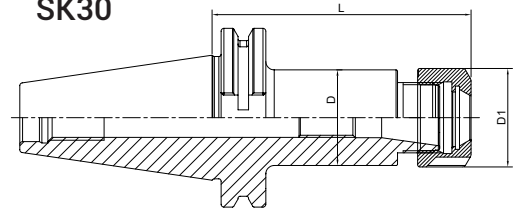
### Tutucu Standart Verileri

#### Taper Standard Datas

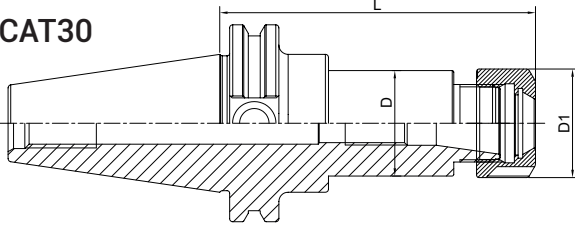
BT30



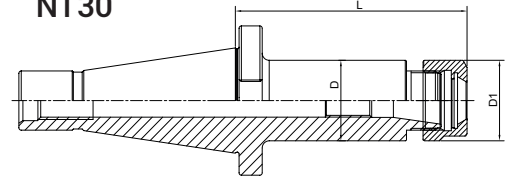
SK30



CAT30



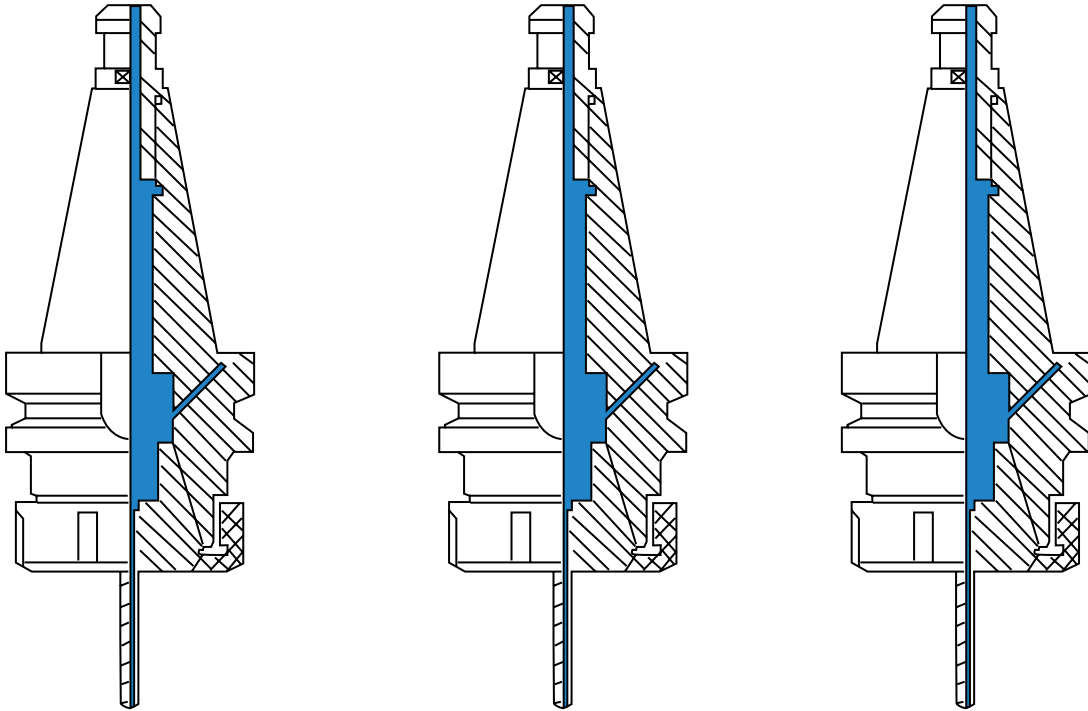
NT30



### Soğutma İçin Delikli Tutma Vidası

#### Retaining Screw with Drill Trough for Collant

BT,SK ve CAT takım tutucuları için uygundur  
Suitable for BT,SK and CAT Tool Holder



Soğutmayı durdurmak için takım vida, soğutma pull studu ile, AD tipi soğutma yöntemi.  
Set screw to stop coolant, with coolant pull stud, AD type cooling method.

Takım vidayı çıkarın, soğutma deliği olmayan pull studu. B tipi soğutma yöntemi.  
Take out the set screw, pull stud without coolant hole. B type cooling method.

Takım vidayı çıkarın, soğutma pull studu ile, AD+B tipi soğutma yöntemi.  
Take out the set screw, with coolant pull stud, AD+B type cooling method.

# TAKIM TUTUCULAR

## TOOL HOLDERS



Tool Dynamic 2009	Model	Comfort
Dimensions wxhxd (mm)	1100x500x820	500x1500x820
Weight (kg)	450	450
Spindle speed (rpm)	300-1100	300-1100
Measuring accuracy (gmm)	<0,5	<0,5
Power requirements (V/Hz)	230/50-60	230/50-60
Power usafe (kw)	0.4	0.4
Compressed air (bar)	6	6
Max. Tool length (mm)	400	400
Optional	700	700
Max. Tool diameter (mm)	350/380 1)	350/380 1)
Optional	400/425	400/425
Max. Tool weight (kg)	30	30

Dengeleme Kalitesi Balancing Grade		G0,4	G1	G2,5	G6,3	G16	G40	G100
Gerekli Hassasiyet Precision Reuquired	e*w(mm/s)	0,4	1	2,5	6,3	16	40	100
	e*w(μmxrpm)	3820	9549	23875	60165	152800	38200	954900

Denge Serisinin Ayarı, ISO 1940 Standardına Göre Yapılmıştır.  
Setting of the Balance Series is according to ISO 1940 Standard.

Formül aşağıdaki gibidir.  
The formula is as follows.

$$U = Mxe$$

$$U = \frac{Gxe}{n} \times 9549$$

$$G = \frac{nxU}{9545xM}$$

G = Dengesizlik Serisi

U = Dengesizlik (g-mm)

e = Eksantrik Mesafe (mm)

M = Rotor Ağırlığı (kg)

n = Devir Dakika Başına Devir Sayısı

9594 = Sabit

G= Unbalance Series

U= Unbalance (g-mm)

e=Eccentric Distance (mm)

M: Rotator Weight (kg)

n:RPM

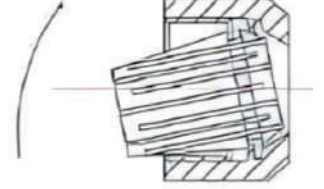
9594=Constant

### Montaj Konisi

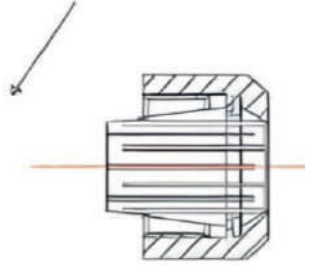
#### Assembling Collet

- Koninin oluk kısmını sıkma somunu eksen halkasının altındaki işarete denk gelecek şekilde yerleştirin. Koniye doğru yönünde takma aracına tık diye oturana kadar itin. Somunu koniyle birlikte takım tutucusuna vida ile sıkın.
- Sökme işlemi gerçekleştirildikten sonra somun takım tutucusundan çıkarıldığında, koninin yüzeyine basın ve aynı anda koninin arka kısmına yana doğru baskı uygulayarak somunu sıkma somunundan ayırana kadar itmeye devam edin
- Yanlış montaj, koninin merkezkaçlığını kalıcı olarak bozabilir ve hasarlı bir sıkma somunuyla sonuçlanabilir.
- Sadece doğru şekilde takılmış konilerle somunları monte edin!  
Koniye önce somun içine monte etmeden asla tutucuya yerleştirmeyin.  
Fazla büyük takım saplarını asla sıkmayın!  
Örneğin, Ø12-11mm koniyi Ø2,2mm çapa sahip bir sapı sıkma için kullanmayın.  
Bunun yerine bir sonraki daha büyük koniyi kullanın (örneğin Ø12,5-11,5mm veya Ø3-12mm)  
Mümkünse takımı koninin tam uzunluğu boyunca yerleştirin. Ancak, takımı asla koni çapının uzunluğunun 2/3'ünden az bir mesafe kadar yerleştirmeyin.  
Yanlış takım yerleştirme, koniyi kalıcı olarak deforme edebilir ve düşük dönme hassasiyetine yol açar.

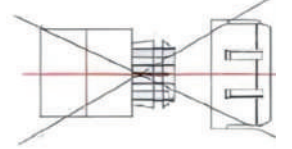
*Insert groove of the collet into eccentric ring of the clamping nut the mark on the bottom of the nut. Push collet in the direction of the arrow until it clicks in insert tool. Screw nut with collet onto tool holder.*



*After the nut is unscrewed from the tool holder, press on the face of the collet while simultaneously pushing sideways on the back of the collet until it disengages from the clamping nut.*



*Improper assembly can permanently destroy the concentricity of the collet and may result in a damaged clamping nut.*



*Only mount nuts with correctly inserted collets!  
Never place the collet into the holder without first assembling it into the nut.  
Never clamp oversize tool shafts!  
e.g never use a Ø12-11mm collet to clamp a Ø2,2mm shaft. Rather use the next bigger collet (here Ø12,5-11,5mm or Ø3-12mm)  
Insert tool the full length of the collet for best results if possible. However never insert tool less than 2/3 of the collet bore length.  
Improper tool insertion can permanently deform the collet and will result in poor runout.*



- \*Bu kılavuza göre ER konik konik tutucuyu sıkıca monte edin. Aksi takdirde, takım tutucu gevşeyebilir ve sonunda kullanıcı için ciddi yaralanmalara veya kazalara neden olabilir.
- \*İşleme başlamadan önce takımın tutucu tarafından sağlamca kavrulduğunu kontrol edin ve onaylayın. Takımın yanlış kavranması, anormal çalışma dönmesine, kırılmasına veya tutucunun ayrılmasına neden olabilir; bu da kullanıcı için ciddi yaralanmalara veya kazalara yol açabilir.
- \*Takımın anormal çalışma dönmesi ve düşmesini önlemek için lütfen uygun takım tutucu kullanın; aksi takdirde ciddi yaralanmalara veya kazalara neden olabilir.
- \*Ciddi kazalara ve yaralanmalara neden olmamak için mil üzerindeki takımı değiştirmeyin. Boşta dönerken, lütfen gücü kapatın veya acil durdurma düğmesine basın.
- \*Dönerken takımı veya takım tutucusunu dokunmayın; aksi takdirde kullanıcı dönen makine tarafından sürüklenebilir ve ciddi yaralanmalara veya kazalara neden olabilir.
- \*Mil tamamen durmadan önce takım tutucusunu manipüle etmeyin; aksi takdirde kullanıcı dönen makine tarafından sürüklenebilir ve ciddi yaralanmalara veya kazalara neden olabilir.
- \*Takım tutucusunda çatlaklar, kırıklar veya şekil değişiklikleri gibi anormal durumlar tespit edilirse artık kullanmayın. Aksi takdirde, kullanıcı için ciddi yaralanmalara veya kazalara neden olabilir.
- \*Takım tutucusunda herhangi bir tamir, yeniden montaj veya modifikasyon yapmayın. Aksi takdirde, takım tutucusunun zayıf işlevi veya anormal çalışma dönmesine neden olabilir.
- \*Lütfen takım tutucusunu normal ve temiz kullanım koşullarında işletin. Takım tutucusunu işletmeden önce ve sonra demir talaşı temizleyin. Ayrıca takım tutucusunun uzun ömürlülüğünü sağlamak için pas önleyici işlem yapılması gerekmektedir.

- \*Mount ER collet chuck firmly according to "How to mount" in this manual. Otherwise, the tool holder might be loosened, which may eventually result in serious bodily injuries or accidents for user.
- \*Check and confirm the tools is clamped firmly by the tools holder before starting operation. Improper clamping of the tools will cause its abnormal run out, breakage or detaching of tool holder, which may result in serious injuries or accidents for user.
- \*Please use the orper tool holder to clamp the tool to avoid its abnormal run out and tool dropping off which may result in serious injuries or accidents for user.
- \*Do not change the tool on the spindle to avoid causing serious accidents and injuries for user due to turning idly in the spindle itself. When idling, please turn power off or press emerhency stop.
- \*Do not touch the tool or the tool holder when rotating, otherwise user might be hauled by the rotating machine, which may result in serious injuries or accidents.
- \*Do not manipulate the tool holder before the spindle stops totally. Otherwise, user might be hauled by the rotating machine, which may result in serious injuries or accidents.
- \*Do not use tool holder any more if some abnormal conditions, like cracks, breakage or transformation are detected thereon. Otherwise, it may result in serious injuries or accidents for user.
- \*Do not make any repairing, re-assembling nor remodeling on the tool holder. Otherwise, it will cause the weak function or abnormal run out of the tool holder. Please operate tool holder under normal and clean usage.
- \*Please wipe iron filling away before and after operating tool holder. Also it's necessary to do anti-corrosion treatment to ensure the longevity of tool holder.

## Montaj Talimatları

### How to Mount

1. Lütfen uygun takım tutucusu miline sahip koniyi seçin ve kullanmadan önce demir talaşlarını ve tozları sildiğinizden emin olun.
2. Lütfen ER koniyi ER somunun içine yerleştirin.
3. Koninin oluğunun ve somunun iç kısmının iyi eşleştiğinden emin olun, (doğru çizime bakınız.)
4. Buna göre, takım tutucusunu kilit mekanizmasına yerleştirin ve sallanmayı önlemek için yönünü sabitleyin.
5. ER koniyi ve ER somunu takım tutucusuna kilitleyin.
6. Takımı ER koniyi yerleştirin. Güvenlik için, takımı ER koninin dibine veya yüksekliğinin 2/3'üne kadar yerleştirin.
7. ER somununu sıkma işlemi için ekli ER anahtarı kullanın, böylece takım tutucusu tarafından sıkılır.
8. Takımı sıktıktan sonra lütfen takım tutucusunu milde çalıştırın. Aksi takdirde takımlar düşer ve ciddi yaralanmalara veya kazalara neden olabilir. (Takımları evrensel makinede doğrudan değiştirme işlemi sadece bu talimatlarla sınırlı olmalıdır. Lütfen yukarıdaki adımları 1-7 takip edin.)

1. Please choose the collet with orpoer shank of tool holder and make sure if you have wiped the iron fillings and dusts away before using it.
2. Please put ER collet into ER nut.
3. Be sure that the groove of collet and the inner of nut match well, (please refer to the right drawing)
4. Accordingly, pul the tool holder into the locking device and fix its direciton to avoid shaking fore and after.
5. To lock ER collet and ER nut into the tool holder.
6. To insert the tool into ER collet. For sfaely, please insert it to the bottom of ER collet or the depth of 2/3.
7. Please use the attached ER wrench to tighten ER nut, thus the tool can be clamped by the tool holder.
8. Please operate the tool holder on the spindle after tightening the tool. If not, the tools drops off and may result in serious injuries or accidents. (The operation of changing the tools directly on universal machine shall not be limited on this instruction. Please follow above steps 1-7)

- \*Freze takım tutucusunu bu kılavuza göre "nasıl monte edileceği"ne göre sıkı bir şekilde monte edin. Aksi takdirde, freze takım tutucusu gevşeyebilir, bu da sonunda ciddi bedensel yaralanmalara veya kullanıcı için kazalara yol açabilir.
- \*Takımın iş tutucusu tarafından sağlam bir şekilde kavrandığını kontrol edin ve onaylayın, işleme başlamadan önce. Takımın düzgün bir şekilde tutulmaması, anormal çalışma, kırılma veya takım tutucusunun çıkması gibi durumlara neden olabilir, bu da ciddi yaralanmalara veya kazalara yol açabilir.
- \*İşleme başlamadan önce takımın çene tarafından sağlam bir şekilde kavrandığını kontrol edin ve onaylayın. Takımın düzgün bir şekilde tutulmaması, anormal çalışma, kırılma veya çenenin çıkması gibi durumlara neden olabilir, bu da ciddi yaralanmalara veya kazalara yol açabilir.
- \*Lütfen takımı sabit bir çalışmada düzeyinde tutmak için freze takım tutucusunu kullanın; aksi halde takımın anormal bir şekilde çalışması ve uçlarının düşmesi gibi durumlar ciddi yaralanmalara veya kazalara yol açabilir.
- \*Takımı mili üzerinde değiştirmeyin; aksi halde mil içinde boşta dönme nedeniyle ciddi kazalara ve yaralanmalara neden olabilir. Boşta dönerken gücü kapatın veya acil durdurma düğmesine basın.
- \*Çalışırken takım veya freze takım tutucusuna dokunmayın; aksi halde kullanıcıyı dönen makineye çekebilecek, bu da ciddi yaralanmalara veya kazalara yol açabilecektir.
- \*Freze takım tutucusunu mil tamamen durmadan manipüle etmeyin; aksi halde kullanıcıyı dönen makineye çekebilecek, bu da ciddi yaralanmalara veya kazalara yol açabilir.
- \*Takım üzerinde çatlaklar, kırılma veya dönüşüm gibi anormal durumlar tespit edilirse freze takım tutucusunu artık kullanmayın; aksi halde ciddi yaralanmalara veya kazalara neden olabilir.
- \*Takım tutucusu üzerinde herhangi bir onarım, yeniden montaj veya değişiklik yapmayın; aksi halde tutucunun zayıf çalışması veya anormal çalışma sorunlarına neden olabilir.
- \*Lütfen freze takım tutucusunu normal ve temiz koşullarda kullanın.
- \*Lütfen freze takım tutucusunu kullanmadan önce ve sonra demir talaşlarını temizleyin. Ayrıca, tutucunun ömrünü sağlamak için pas önleyici işlem yapmanız gerekmektedir.)

- \*Mount milling chuck firmly according to "how to mount" in this manual. Otherwise, the milling chuck might be loosened, which may eventually result in serious bodily injuries or accidents for user.
- \*Check and confirm the tools is clamped firmly by the tools holder before starting operation. Improper clamping of the tools will cause its abnormal run out, breakage or detaching of tool holder, which may result in serious injuries or accidents for user.
- \*Check and confirm the tools is clamped firmly by the chuck before starting operation. Improper clamping of the tools will cause its abnormal run out, breakage or detaching of the chuck, which may result in serious injuries or accidents for user
- \*Please use the milling chuck to clamp the tools to avoid its abnormal run out and bits drooping off, which may result in serious injuries or accidents for user.
- \*Do not change the tool on the spindle to avoid causing serious accidents and injuries for user due to turning idly in the spindle itself. When idling, please turn power off or press emergency stop.
- \*Do not touch the tools or milling chuck when rotating, other wise, user might be hauled by the rotating machine, which may result in serious injuries or accidents.
- \*Do not manipulate the milling chuck before the spindle stops totally, otherwise, user might be hauled by the rotating machine, which may result in serious injuries or accidents.
- \*Do not use milling chuck any more if some abnormal conditions, like cracks, breakage or transformation are detected thereon. Otherwise, it may result in serious injuries or accidents for user.
- \*Do not make any repairing, re-assembling nor remodeling on the tools holder,, otherwise, it will cause the weak function or abnormal run out of the tool holder.
- \*Please operate milling chuck under normal and clean usage.
- \*Please wipe iron filings away before and after operating milling chuck. Also it's necessary to do anticorrosion treatment to ensure the longevity of tool holder.

## Montaj Talimatları

### How to Mount

1. Lütfen h7 toleranslı şaftlı takım kullanın, bu takımı ve düz kovani en iyi sıkma koşullarında tutar. Bu sadece kapasitesini etkilemekle kalmaz, aynı zamanda kırık bir takım kullanıldığında düz kovani ve freze takım tutucusunu da zarar verebilir.
2. Bu nedenle, takım tutucusunu kilitleme cihazına yerleştirin ve sarsılmasını önlemek için yönünü sabitleyin.
3. Lütfen düz kovani ve takımı adımlar halinde freze takım tutucusuna yerleştirin.
4. Güvenlik için, takımı kovanın altına veya 2/3 derinliğine yerleştirin.
5. Lütfen ekli kancalı anahtarı kullanarak somunu 60-85 Nm gücünde gevşetin. Böylece, takım tutucusu maksimum 1500 kg-cm torka ulaşabilir, anormal çalışma ve arıza riskini önlemek için somunu aşırı derecede döndürmeyin veya vurmeyin.
6. Takımı hafifletikten sonra freze takım tutucusunu mil üzerinde kullanın. (Takımı evrensel makinede doğrudan değiştirme işlemi, bu talimatla sınırlı olmamalıdır. Lütfen yukarıdaki 1-5 adımlarını takip edin.)

1. Please use the tool with tolerance h7 shank, which keeps the tool and straight collet under the best clamping condition. It not only affects the capacity of the chuck, but also hurt the straight collet and milling chuck itself if using the broken tool.
2. Accordingly, put the tool holder into the locking device and fix its direction to avoid shaking fore and after.
3. Please put the straight collet and the tool into the milling chuck by steps.
4. For safety, please insert the tool into the bottom of collet or the depth of 2/3
5. Please use the attached hook wrench to lighten the nut with the strength 60-85Nm. Thus the tool holder could maximum the torsion to 1500kg-Cm, do not rotate or knock the nut excessively for fear of the abnormal run out and breakdown.
6. Please operate the milling chuck on the spindle after lightening the tool. (The operation of changing the tool directly on Universal machine shall not be limited on this instruction. Please follow above steps 1-5)

### APU Matkap Tutucu Kılavuzu APU Drill Chuck Holder Manual

- \* APU matkap mandren tutucuyu bu kılavuzdaki "nasıl monte edileceği"ne göre sıkı bir şekilde monte edin. Aksi takdirde tutucu gevşeyebilir, bu da sonunda ciddi bedensel yaralanmalara veya kullanıcı için kazalara yol açabilir.
- \* Takım uçlarının işlemeye başlamadan önce matkap mandren tarafından sağlam bir şekilde kavrandığını kontrol edin ve onaylayın. Takım uçlarının düzgün bir şekilde tutulmaması, anormal çalışma, kırılma veya matkap mandrenin çıkmasına neden olabilir, bu da ciddi yaralanmalara veya kazalara yol açabilir.
- \* Lütfen matkap uçlarını düzgün APU matkap mandren tutucusuyla tutmak için kullanın; aksi halde anormal çalışma ve uçların düşmesi gibi durumlar ciddi yaralanmalara veya kazalara yol açabilir.
- \* Mil üzerindeki takımı değiştirmeyin; aksi halde mili boşta döndürme nedeniyle ciddi kazalara ve yaralanmalara neden olabilir. Boşta dönerken gücü kapatın veya acil durdurma düğmesine basın.
- \* Dönerken takımı veya matkap mandrenini dokunmayın. Aksi halde kullanıcılığı dönen makineye çekebilir, bu da ciddi yaralanmalara veya kazalara yol açabilir.
- \* APU matkap mandren tutucusunu mil tamamen durmadan manipüle etmeyin; aksi halde kullanıcılığı dönen makineye çekebilir, bu da ciddi yaralanmalara veya kazalara yol açabilir.
- \* APU matkap mandren tutucusunda çatlaklar, kırılma veya dönüşüm gibi anormal durumlar tespit edilirse artık kullanmayın; aksi halde ciddi yaralanmalara veya kazalara yol açabilir.
- \* Tutucu üzerinde herhangi bir onarım, yeniden montaj veya değişiklik yapmayın; aksi halde ciddi yaralanmalara veya kazalara neden olabilir.
- \* Lütfen APU matkap mandren tutucusunu normal ve temiz koşullarda kullanın.
- \* Lütfen APU matkap mandren tutucusunu kullanmadan önce ve sonra demir talaşlarını temizleyin. Ayrıca, bu tutucunun ömrünü sağlamak için pas önleyici işlem yapmanız gerekmektedir.

- \*Mount APU drill chuck holder firmly according to "how to mount" in this manual. Otherwise the holder might be loosened, which may eventually result in serious bodily injuries or accidents for user.
- \*Check and confirm the drill bit is clamped firmly by the chuck before starting operation. Improper clamping of the drill bits will cause its abnormal run out, breakage or detaching of the chuck, which may result in serious injuries or accidents for user.
- \*Please use the proper APU drill chuck holder to clamp the drill bits to avoid its abnormal run out and bits dropping off, which may result in serious injuries or accidents for user.
- \*Do not change the tool on the spindle to avoid causing serious accidents and injuries for user due to turning idly in the spindle itself. When idling, please turn power off or press emergency stop.
- \*Do not touch the tool or the drill chuck when rotating. Otherwise, user might be hauled by the rotating machine, which may result in serious injuries or accidents.
- \*Do not manipulate APU drill chuck holder before the spindle stops totally; otherwise, user might be hauled by the rotating machine, which may result in serious injuries or accidents.
- \*Do not use APU drill chuck holder anymore if some abnormal conditions, like cracks, breakage or transformation are detected thereon. Otherwise, it may result in serious injuries or accidents for user.
- \*Do not make any repairing, re-assembling or remodeling on the holder. Otherwise, it may result in serious injuries or accidents for user.
- \*Please operate APU drill chuck holder under normal and clean usage.
- \*Please wipe iron fillings away before and after operating APU drill chuck holder. Also it's necessary to do anti-corrosion treatment to ensure the longevity of this chuck.

## Montaj Talimatları How to Mount

1. Buna göre, APU matkap mandren tutucusunu kilitleme mekanizmasına yerleştirin
2. Üç çenenin açılıp kapanmasını ayarlamak için halkayı döndürün.
3. Lütfen matkap ucu tutucuya yerleştirin.
4. Matkap uçlarını çeneler tarafından sağlam bir şekilde kavrayabilmek için ekli kancalı anahtarı kullanarak halkayı döndürün.
5. Güvenlik için, matkap uçlarını çenelerin altına veya 2/3 derinliğine yerleştirin.
6. Lütfen matkabı sıkıca tuttuktan sonra APU matkap mandren tutucusunu mil üzerinde çalıştırın; aksi halde matkap ucu düşebilir ve ciddi yaralanmalara veya kazalara yol açabilir. (Matkap ucu evrensel makinede doğrudan değiştirme işlemi, bu talimatla sınırlı olmamalıdır. Lütfen yukarıdaki 1-5 adımlarını takip edin.)

1. Accordingly, put APU drill chuck holder into the locking device.
2. To rotate the ring to adjust the open and close of three jaws.
3. Please put the drill bit into the holder.
4. Please use the attached hook spanner to rotate the ring to let the drill bit be clamped firmly by the jaws.
5. For safety, please insert the drill bit into the bottom of jaws or the depth of 2/3.
6. Please operate APU drill chuck holder on the spindle after tightening the bit, if not the bit drops off and may result in serious injuries or accidents. (The operation of changing the bit directly on universal machine shall not be limited on this instruction. Please follow above steps 1-5)

## Anahtarsız Matkap Tutucu Kılavuzu Keyless Drill Chuck Manual

- \*Tutucuyu bu kılavuzdaki "nasıl monte edileceği"ne göre sıkı bir şekilde monte edin. Aksi takdirde, chuck gevşeyebilir, bu da sonunda ciddi bedensel yaralanmalara veya kazalara yol açabilir.
- \*Takımın işleme başlamadan önce üç çene tarafından sağlam bir şekilde kavrandığını kontrol edin ve onaylayın. Takımın düzgün bir şekilde tutulmaması, anormal çalışma, kırılma ve/veya çıkması gibi durumlar ciddi bedensel yaralanmalara veya kazalara neden olabilir.
- \*Büyük kapasiteli bir tutucular daha küçük çaplı bir takım mandrelemek durumunda, otomatik sıkma mekanizmasının düzgün çalışmayabileceğini unutmayın. Bu, takımın kaymasına ve sonunda düşmesine neden olabilir. Bu nedenle takım elinizle sıkıca sıkın.
- \*Tutucu saat yönünün tersine dönme (CCW) hareketiyle kullanılamaz. Eğer saat yönünün tersine döndürülürse, takım gevşer ve tutucu çıkabilir, bu da ciddi bedensel yaralanmalara veya kazalara neden olabilir.
- \*Acil durdurma mekanizmasına sahip bir makinede kullanılamaz. Eğer makine milinin böyle bir acil durdurma ile dönmesi durdurulursa, takım gevşer ve mandrenden çıkabilir, bu da ciddi bedensel yaralanmalara ve kazalara neden olabilir. (Bu tür acil durdurma mekanizmasına sahip makineler için CNC anahtarsız mandren veya dream mandre kullanın.)
- \*Tutucu veya takım dönerken onlara dokunmayın. Aksi takdirde, makinenin dönen parçaları tarafından yakalanma tehlikesi olabilir, bu da ciddi bedensel yaralanmalara veya kazalara neden olabilir.
- \*İş parçası tamamen durmadan önce parçaya temas etmeyin. Aksi takdirde, makinenin dönen parçaları tarafından yakalanma tehlikesi olabilir, bu da ciddi bedensel yaralanmalara veya kazalara neden olabilir.
- \*Eğer tutucu üzerinde çatlaklar, kırılma veya dönüşüm gibi anormal durumlar tespit edilirse, kullanmayın. Bu tür arızalı ürünün kullanılması ciddi bedensel yaralanmalara veya kazalara neden olabilir.
- \*Tutucu üzerinde herhangi bir onarım, yeniden montaj veya değişiklik yapmayın. Bu şekilde değiştirilmiş bir tutucunun kullanılması ciddi bedensel yaralanmalara veya kazalara neden olabilir.

## Montaj Talimatları How to Mount

1. Tutucunun konik kısmı yağlı malzemeden, tozdan ve yabancı maddelerden iyi bir şekilde temizlenmelidir.
  2. Üç çene, mandren burnunun altına çekilmelidir.
  3. Milin konik kısmı veya mili taşıyan parça da iyi bir şekilde temizlenmelidir.
  4. Milin konik kısmını veya mili taşıyan parçayı, konik parçaların herhangi birinde kusur veya hasar oluşturmadan dikkatlice chuck'ın konik kısmına yerleştirin. Ve yumuşak çelik çubuğun kenarını tahta bir çekiçle çarparak chuci sürün, chucun mil veya taşıyan parçadan kaymasına veya düşmesine izin vermemeye dikkat edin.
  5. Çenelere veya kovanın üzerine çekiçle vurmayın.
1. The tapered part of the chuck must well be cleaned off of oily material, dust and foreign material.
  2. The three jaws must be retracted below the level of the chuck nose.
  3. The tapered part of the spindle or the arbor must also well be cleaned.
  4. Insert the tapered part of the spindle or the arbor into the tapered part of the chuck, taking care not to make any flaws or damages on any of the tapered parts. And drive the chuck by hammering the edge of the soft steel bar with a wooden hammer taking care not to let the chuck slip off or fall down from the spindle or the arbor.
  5. Do not hammer the jaws nor sleeve.

- \*Mount the chuck firmly according to "how to mount" in this manual. Otherwise, the chuck might be loosened, which may eventually result in serious bodily injuries or accidents.
- \*Check and confirm that the tool is clamped firmly by the three jaws before starting operation. Improper clamping of the tool will cause its abnormal run out, breakage and/or detaching, which may result in serious bodily injuries or accidents.
- \*Tighten the chuck strongly by hands in case of chucking a tool of smaller diameter with a chuck of large capacity, the automatic tightening mechanism may fail to function properly, which may cause slipping of the tool and eventually its falling down.
- \*The chuck can not be used to the CCW rotation. If the chuck is rotated in CCW direction, the tool will be loosened and spin off from the chuck which may cause serious bodily injuries or accidents.
- \*The chuck can not be used to the machine having an emergency stop mechanism. If the machine spindle stops rotating by such emergency stopping, the tool will be loosened and spin off from the chuck, which may cause serious bodily injuries and accidents. (Use our CNC keyless chuck or dream chuck for the machines having such emergency stop mechanism.)
- \*Do not touch the chuck or the tool while being rotated. Otherwise, there will be dangers to be caught by the rotating parts of the machine, which can result in serious bodily injuries or accidents.
- \*Do not manipulate the chuck before complete stop of the spindle. Otherwise, there will be dangers to be caught by the rotating parts of the machine, which can result in serious bodily injuries or accidents.
- \*Do not use the chuck if some abnormal conditions, like cracks, breakage or transformation are detected thereon. Use of such defective chuck may cause serious bodily injuries or accidents.
- \*Do not make any repairing re-assembling nor remodeling on the chuck. Use of such re-worked chuck may cause serious bodily injuries or accidents.

## TAKIM TUTUCULAR

### TOOL HOLDERS

#### Anahtarsız Matkap Tutucu Kılavuzu Keyless Drill Chuck Manual

Kolay kullanım, pratiklik ve daha yüksek güvenlik" bu tür matkap mandreninin büyük avantajlarıdır. Bu ürünü kullanırken kazalara neden olmamak ve ömrünü uzatmak için kılavuzu dikkatlice okumanız gerekmektedir. Lütfen aşağıdaki noktalara dikkat edin.

Ürünü kullanırken, tutma kapasitesi uzunluğu (L1), matkap uçunu altına yerleştirmeli veya üç çenenin en az 2/3 kadarına kadar yerleştirmelidir. (L)

*"Easy to operate, convenience and the higher safety" are the great advantage of this kind of drill chuck. When operating this product, you have to read the manual carefully to keep from causing the accidents and promote longevity. Please follow the point as below.*

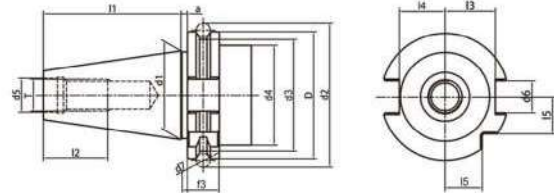
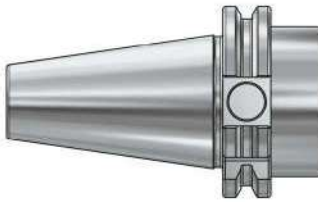
*When you operate, the length of holding capacity (L1) shall insert the drill bit to the bottom or at least insert to 2/3 of the length of three jaws. (L)*

Spec of Drill Chuck	Length of three jaw L(mm)	Holding Capacity L1mm
5/8" (16mm)	30	20
1/2" (13mm)	28	19
3/8" (10mm)	26	17
1/4" (6.5mm)	20	13
1/8" (3mm)	14	9
5/16" (8mm)	26	17

Her tür matkap mandreninin üç çenenin uzunluğu (L) ve tutma kapasitesi (L) için özellikleri aşağıda belirtilmiştir, lütfen buna göz atınız

*Every kind of specification (drill chuck) for the length of three jaws (L) & the holding capacity (L) is as follows, please refer to it.*

#### Takım Tutucu İnceleme Standartları Tool Holder Inspection Standard

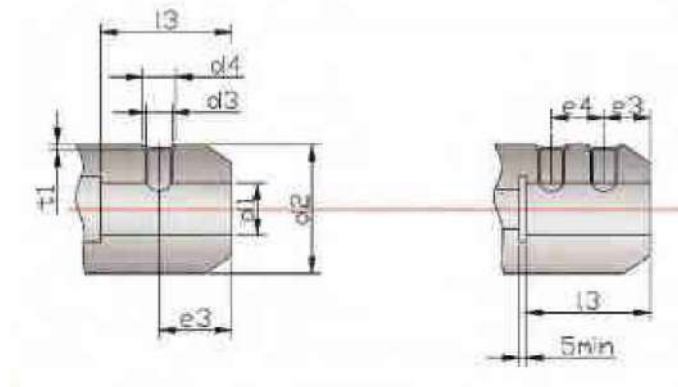


Model	a/2	dc-do	lp	ATD				
				AT3	AT4	AT5	AT6	AT7
SK30	8' 15'50" 8.29714	12.25	42	0.002	0.003	0.005	0.008	0.013
SK40		17.208	59	0.003	0.005	0.007	0.012	0.019
SK45		21.292	73	0.003	0.005	0.007	0.012	0.019
SK50		26.833	92	0.004	0.006	0.009	0.015	0.023
SK55		34.125	117	0.004	0.006	0.009	0.015	0.023
SK60		44.333	152	0.005	0.008	0.012	0.019	0.030
SK65		55.709	191	0.005	0.008	0.012	0.019	0.031
SK70		70.292	241	0.006	0.010	0.015	0.024	0.039
SK75		85.75	294	0.006	0.010	0.015	0.024	0.047
SK80		110.542	379	0.008	0.012	0.019	0.030	0.047

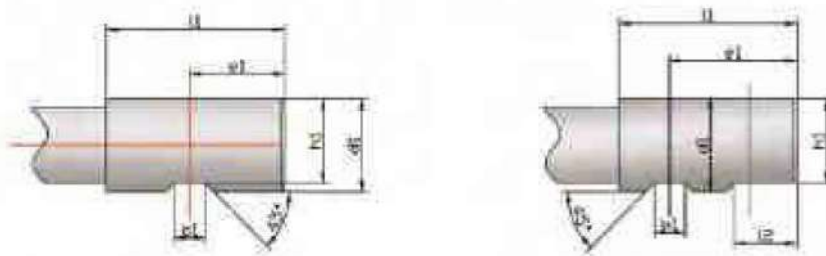
# TAKIM TUTUCULAR

## TOOL HOLDERS

 Parmak Freze Tutucu  
End Mill Holder (DIN1835B)



d1	d2	d3	d4	e3	l3	t1
6	25	M6	8	18	35	1.0
8	28	M8	10	18	35	1.3
10	35	M10	12	20	39	1.5
12	42	M12	14	22.5	44	1.6
14	44	M12	14	22.5	44	1.6
16	48	M14	16	24	47	1.7
18	50	M14	16	24	47	1.7
20	52	M16	18	25	49	2.1
25	65	M18x2	20	24	54	2.1
32	72	M20x2	22	24	58	2.2

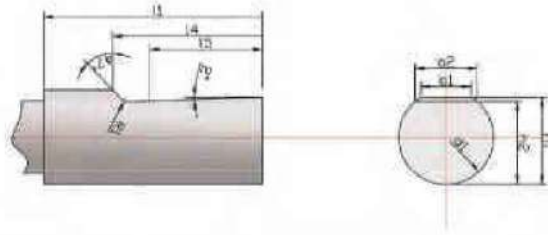


d1	l1	b1	l1	e1	h1
6	36	4.2	-	18.0	5.1
8	36	5.5	-	18.0	6.9
10	40	7.0	-	20.0	8.5
12	45	8.0	-	22.5	10.4
14	45	8.0	-	22.5	12.7
16	48	10.0	-	24.0	14.2
18	48	10.0	-	24.0	16.2
20	50	11.0	-	25.0	18.2
25	56	12.0	17	32.0	23.0
32	60	14.0	19	35.0	30.0

# TAKIM TUTUCULAR

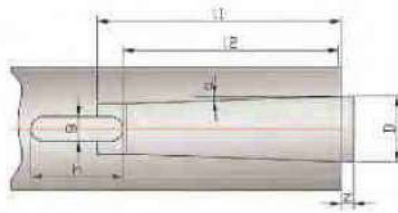
## TOOL HOLDERS

### Parmak Freze Tutucu End Mill Holder (DIN1835E)



d1	l1	b1	l2	e1	h1
6	36	4.2	-	18.0	5.1
8	36	5.5	-	18.0	6.9
10	40	7.0	-	20.0	8.5
12	45	8.0	-	22.5	10.4
14	45	8.0	-	22.5	12.7
16	48	10.0	-	24.0	14.2
18	48	10.0	-	24.0	16.2
20	50	11.0	-	25.0	18.2
25	56	12.0	17	32.0	23.0
32	60	14.0	19	35.0	30.0

### Tang ile Mors Konik Morse Taper with Tang (DIN228D)

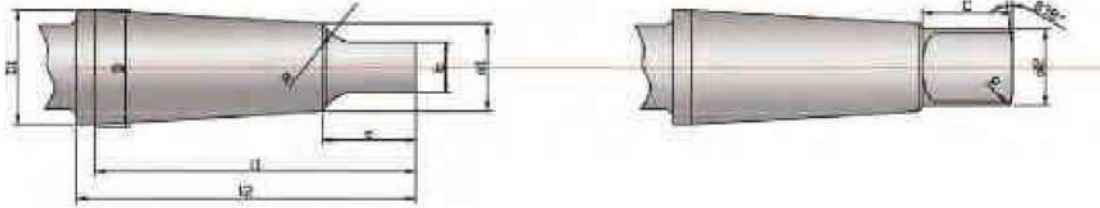


Taper No	Taper		a"	D	l1 (min)	L2	g	h	z	Drill Dia.
MT1	1/20.047	0.04988	1°25'43"	12.065	56	52	5.4	19	1	1
MT2	1/20.020	0.04995	1°25'50"	17.780	67	62	6.6	22	1	1
MT3	1/19.922	0.05020	1°26'16"	23.825	84	78	8.2	27	1	1
MT4	1/19.254	0.05194	1°29'15"	31.267	107	98	12.2	32	1.5	1.5
MT5	1/19.002	0.05263	1°30'26"	44.399	135	125	16.2	38	1.5	1.5

# TAKIM TUTUCULAR

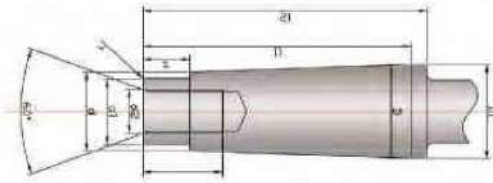
## TOOL HOLDERS

### Tang ile Mors Konik Morse Taper with Tang (DIN228B)



Taper No	L2	D1	d1	d2	l1	l2	b	c	e	R	r	Drill Dia.
MT1	12.065	12.240	8.972	8.7	62	65.5	5.2	8.5	13.5	5	1.2	3.00-14.00
MT2	17.780	18.030	14.034	13.5	75	80.0	6.3	10.0	16.0	6	1.6	14.25-23.00
MT3	23.825	24.076	19.107	18.5	94	99.0	7.9	13.0	20.0	7	2	23.25-31.75
MT4	31.267	31.605	25.164	24.5	117.5	124.0	11.9	16.0	24.0	8	2.5	32.00-50.50
MT5	44.399	44.741	36.531	35.7	149.5	156.0	15.9	19.0	29.0	10	3	51.00-76.00

### Tang ile Mors Konik Morse Taper with Tang (DIN228B)



Taper No	D	D1	d	d1	l1	l2	t	r	d2	k	End Mill Dia.
MT1	12.065	12.240	9.396	9	53.5	57	5	0.2	M6	16	6.00-12.00
MT2	17.780	18.030	14.583	14	64	69	5	0.2	M10	24	14.00-20.00
MT3	23.825	24.076	19.759	19	81	86	7	0.6	M12	28	22.00-36.00
MT4	31.267	31.605	25.943	25	102.5	109	9	1.05	M16	32	32.00-56.00
MT5	44.399	44.741	37.584	25.7	129.5	136	9	2.5	M20	40	40.00-71.00





**[www.euroloy.com](http://www.euroloy.com)**

**Head Office - Via Leonardo Da Vinci, 4  
- 20054, Segrate  
Milano MI ITALIA**

**Euroloy Italia (+39) 0282398309  
Euroloy Turkey (+90) 850 933 3408**

**✉ [info@euroloy.com](mailto:info@euroloy.com)**

**📷 [@euroloytools](https://www.instagram.com/euroloytools)**