



EURLOY

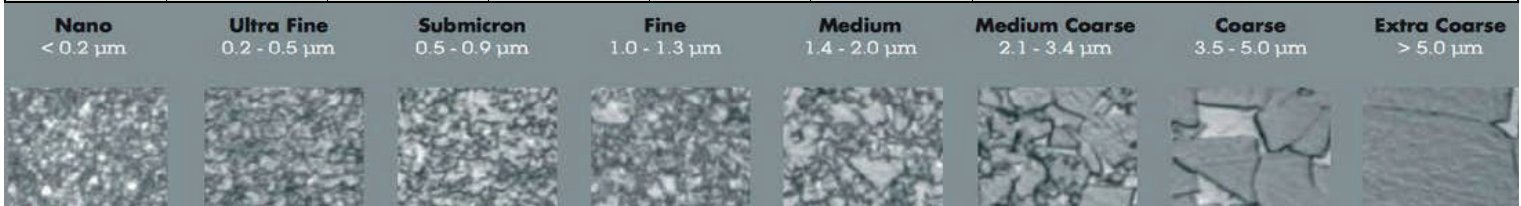
TUNGSTEN KARBÜR ÇUBUKLAR
CEMENTED CARBIDE RODS



KALİTE BİLGİSİ

GRADE INFORMATION

Grade	Co (%)	HRA	Intensity (g/cm ³)	Cross Breaking Strength	Grain Size (µm)	Application Area
KH60U	6	93.8	14.8	3900	Superince Ultrafine	Applicable to the high hardness material processing, including PCB drills, milling cutters and gravers.
KH060S	6	92.5	14.85	3000	Submicron	The best material for diamond coating, suitable for fiber reinforced material (carbon fiber and glass fiber), composite material, high-silicon aluminum alloy and graphite products.
KH103S	10.3	92.2	14.43	3800	Superince Ultrafine	For general use of high-speed milling and drilling, applicable to alloy steel, stainless steel, cast iron, non-ferrous metal, süper alloy etc.
KH102S	10	91.8	14.45	3700	Submicron	For general use of milling and drilling, applicable to alloy steel, stainless steel, non-ferrous metal, super alloy etc.
KH100S	10	91.8	14.45	3700	Submicron	For general use of economic milling and drilling, applicable to alloy steel, stainless steel, non-ferrous metal, super alloy etc.
KH120U	12.0	92.6	14.12	4200	Superince Ultrafina	Special carbide material of high-speed milling, applicable to alloy steel (HRC50-60), stainless steel, non-ferrous metal, titanium alloy, süper alloy etc.
KH100SR	10.0	91.8	14.45	3700	Submicron	Economic grade for milling, applicable to alloy steel, non-ferrous metal etc.
KH090U	9.0	93.0	14.50	3900	Superince Ultrafine	Applicable to processing the hardness and difficult-to-machine materials, stainless machining and micro cutter.



 **DOLU ÇUBUKLAR**

 **SOLID RODS**



 **EUROLOY**
CUTTING TOOLS



DOLU ÇUBUKLAR

SOLID RODS

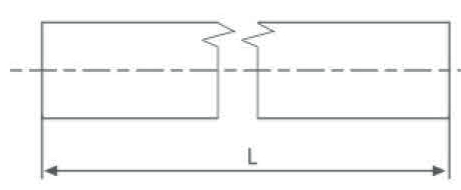


Metrik Tip
Metric Type

Taşlanmamış Unground	ØD(mm)		L(mm) (0,+5)
	Tolerans Tolerance	Taşlanmış Ground h6/h5	
1,3	+0/+0.15	1.0	310/330
2,3	+0/+0.15	2.0	310/330
3,3	+0/+0.15	3.0	310/330
3,8	+0/+0.20	3.5	310/330
4,3	+0/+0.20	4.0	310/330
4,8	+0/+0.20	4.5	310/330
5,3	+0/+0.20	5.0	310/330
5,8	+0/+0.20	5.5	310/330
6,3	+0/+0.20	6.0	310/330
6,8	+0/+0.30	6.5	310/330
7,3	+0/+0.30	7.0	310/330
7,8	+0/+0.30	7.5	310/330
8,3	+0/+0.30	8.0	310/330
8,8	+0/+0.30	8.5	310/330
9,3	+0/+0.30	9.0	310/330
9,8	+0/+0.30	9.5	310/330
10,3	+0/+0.30	10.0	310/330
10,8	+0/+0.30	10.5	310/330
11,3	+0/+0.30	11.0	310/330
11,8	+0/+0.30	11.5	310/330
12,3	+0/+0.30	12.0	310/330
12,8	+0/+0.40	12.5	310/330
13,3	+0/+0.40	13.0	310/330
13,8	+0/+0.40	13.5	310/330
14,3	+0/+0.40	14.0	310/330
14,8	+0/+0.40	14.5	310/330
15,3	+0/+0.40	15.0	310/330
15,8	+0/+0.40	15.5	310/330
16,3	+0/+0.40	16.0	310/330

İnç Tip
Inch Type

ØD(inch)	Taşlanmamış Tolerans Unground Tol.	Taşlanmış Tolerans Ground Tol.	L(inch) (0,+0.197)
1/8	+0.0118/+0.01	h6/h5	13
3/16	+0.0118/+0.01	h6/h5	13
1/4	+0.0118/+0.02	h6/h5	13
5/16	+0.0118/+0.02	h6/h5	13
3/8	+0.0118/+0.02	h6/h5	13
1/2	+0.0118/+0.02	h6/h5	13
5/8	+0.0118/+0.02	h6/h5	13
3/4	+0.0118/+0.03	h6/h5	13
1	+0.0118/+0.03	h6/h5	13
1-1/4	+0.0118/+0.03	h6/h5	13
1-1/2	+0.0118/+0.03	h6/h5	13

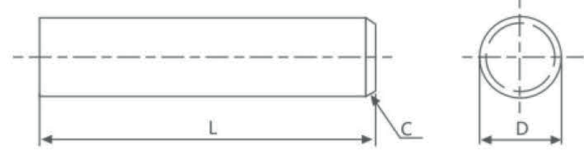


Metrik Tip
Metric Type

Taşlanmamış Unground	ØD(mm)		L(mm) (0,+5)
	Tolerans Tolerance	Taşlanmış Ground h6/h5	
16,8	+0/+0.50	16.5	310/330
17,3	+0/+0.50	17.0	310/330
17,8	+0/+0.50	17.5	310/330
18,3	+0/+0.50	18.0	310/330
18,8	+0/+0.50	18.5	310/330
19,3	+0/+0.50	19.0	310/330
20,3	+0/+0.50	20.0	310/330
21,3	+0/+0.50	21.0	310/330
22,3	+0/+0.50	22.0	310/330
23,3	+0/+0.50	23.0	310/330
24,3	+0/+0.50	24.0	310/330
25,3	+0/+0.50	25.0	310/330
26,3	+0/+0.50	26.0	310/330
27,3	+0/+0.50	27.0	310/330
28,3	+0/+0.50	28.0	310/330
29,3	+0/+0.50	29.0	310/330
30,3	+0/+0.50	30,0	310/330
31,3	+0/+0.50	31,0	310/330
32,3	+0/+0.50	32,0	310/330
33,3	+0/+0.50	33,0	310/330
34,3	+0/+0.50	34,0	310/330
35,3	+0/+0.50	35,0	310/330
36,3	+0/+0.50	36,0	310/330
37,3	+0/+0.50	37,0	310/330
38,3	+0/+0.50	38,0	310/330
39,3	+0/+0.50	39,0	310/330
40,3	+0/+0.50	40.0	310/330
45,3	+0.20/+0.70	45.0	310/330
50,3	+0.20/+0.70	50.0	310/330

BOYU KESİLMİŞ DOLU ÇUBUKLAR

SOLID RODS CUT TO LENGTH



Metrik Tip
Metric Type

Taşlanmamış Unground	Tolerans Tolerance	Taşlanmış Ground	C(mm) (±0.1;45°±3°)	L(mm) (0,+1)
		h6/h5		
3,3	+0/+0.15	3	0,4	50
3,3	+0/+0.15	3	0,4	70
3,3	+0/+0.15	3	0,4	100
4,3	-0.10/+0.10	4	0,4	50
4,3	-0.10/+0.10	4	0,4	70
4,3	-0.10/+0.10	4	0,4	100
5,3	-0.10/+0.10	5	0,5	50
5,3	-0.10/+0.10	5	0,5	70
5,3	-0.10/+0.10	5	0,5	80
6,3	-0.10/+0.10	6	0,6	50
6,3	-0.10/+0.10	6	0,6	60
6,3	-0.10/+0.10	6	0,6	100
8,3	-0.05/+0.20	8	0,6	60
8,3	-0.05/+0.20	8	0,6	80
8,3	-0.05/+0.20	8	0,6	100
10,3	-0.05/+0.20	10	0,8	70
10,3	-0.05/+0.20	10	0,8	90

Metrik Tip
Metric Type



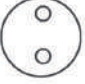
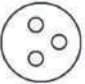
Taşlanmamış Unground	Tolerans Tolerance	Taşlanmış Ground	C(mm) (±0.1;45°±3°)	L(mm) (0,+1)
		h6/h5		
10,3	-0.05/+0.20	10	0,8	100
11,3	-0.05/+0.25	11	0,8	110
12,3	-0.05/+0.25	12	0,8	75
12,3	-0.05/+0.25	12	0,8	90
12,3	-0.05/+0.25	12	0,8	100
12,3	-0.05/+0.25	12	0,8	120
14,3	+0/+0.40	14	0,8	75
14,3	+0/+0.40	14	0,8	110
14,3	+0/+0.40	14	0,8	125
16,3	+0/+0.40	16	0,8	100
16,3	+0/+0.40	16	0,8	125
18,3	+0/+0.50	18	1,0	100
18,3	+0/+0.50	18	1,0	150
20,3	+0/+0.50	20	1,0	100
20,3	+0/+0.50	20	1,0	120
20,3	+0/+0.50	20	1,0	150
25,3	+0/+0.50	25	1,0	100
25,3	+0/+0.50	25	1,0	150

İnç Tip
Inch Type

ØD(inch)	Taşlanmamış Tolerans Unground tol.	Taşlanmış Tolerans	C(inch) ±0.004;45°±3°	L(inch) (0,+0.003)
		Ground tol.		
1/8	+0.0118/+0.0177	h6/h5	0,012	2-1/4
1/8	+0.0118/+0.0177	h6/h5	0,012	2-1/2
1/8	+0.0118/+0.0177	h6/h5	0,012	2
1/8	+0.0118/+0.0177	h6/h5	0,012	1-1/2
1/8	+0.0118/+0.0177	h6/h5	0,012	3
1/8	+0.0118/+0.0177	h6/h5	0,012	4
3/16	+0.0078/+0.0157	h6/h5	0,016	1-1/2
3/16	+0.0078/+0.0157	h6/h5	0,016	2
3/16	+0.0078/+0.0157	h6/h5	0,016	2-1/2
3/16	+0.0078/+0.0157	h6/h5	0,016	3
3/16	+0.0078/+0.0157	h6/h5	0,016	4
3/16	+0.0078/+0.0157	h6/h5	0,016	6
1/4	+0.0098/+0.0196	h6/h5	0,024	2
1/4	+0.0098/+0.0196	h6/h5	0,024	2-1/2
1/4	+0.0098/+0.0196	h6/h5	0,024	3
1/4	+0.0098/+0.0196	h6/h5	0,024	3-1/4
1/4	+0.0098/+0.0196	h6/h5	0,024	4
1/4	+0.0098/+0.0196	h6/h5	0,024	6
5/16	+0.0098/+0.0196	h6/h5	0,024	2
5/16	+0.0098/+0.0196	h6/h5	0,024	2-1/2
5/16	+0.0098/+0.0196	h6/h5	0,024	3
5/16	+0.0098/+0.0196	h6/h5	0,024	3-1/2
5/16	+0.0098/+0.0196	h6/h5	0,024	4
5/16	+0.0098/+0.0196	h6/h5	0,024	6
3/8	+0.0098/+0.0196	h6/h5	0,024	2
3/8	+0.0098/+0.0196	h6/h5	0,024	2-1/2
3/8	+0.0098/+0.0196	h6/h5	0,024	3
3/8	+0.0098/+0.0196	h6/h5	0,024	3-1/2
3/8	+0.0098/+0.0196	h6/h5	0,024	4

İnç Tip
Inch Type

ØD(inch)	Taşlanmamış Tolerans Unground tol.	Taşlanmış Tolerans	C(inch) ±0.004;45°±3°	L(inch) (0,+0.003)
		Ground tol.		
3/8	+0.0098/+0.0196	h6/h5	0,024	5
3/8	+0.0098/+0.0196	h6/h5	0,024	6
1/2	+0.0118/+0.0275	h6/h5	0,031	2-1/2
1/2	+0.0118/+0.0275	h6/h5	0,031	3
1/2	+0.0118/+0.0275	h6/h5	0,031	3-1/2
1/2	+0.0118/+0.0275	h6/h5	0,031	4
1/2	+0.0118/+0.0275	h6/h5	0,031	4-1/2
1/2	+0.0118/+0.0275	h6/h5	0,031	5
1/2	+0.0118/+0.0275	h6/h5	0,031	6
1/2	+0.0118/+0.0275	h6/h5	0,031	8
5/8	+0.0118/+0.0275	h6/h5	0,031	3
5/8	+0.0118/+0.0275	h6/h5	0,031	3-1/2
5/8	+0.0118/+0.0275	h6/h5	0,031	4
5/8	+0.0118/+0.0275	h6/h5	0,031	5
5/8	+0.0118/+0.0275	h6/h5	0,031	6
5/8	+0.0118/+0.0275	h6/h5	0,031	8
3/4	+0.0118/+0.0314	h6/h5	0,039	4
3/4	+0.0118/+0.0314	h6/h5	0,039	5
3/4	+0.0118/+0.0314	h6/h5	0,039	6
3/4	+0.0118/+0.0314	h6/h5	0,039	8
1	+0.0118/+0.0314	h6/h5	0,039	3
1	+0.0118/+0.0314	h6/h5	0,039	4
1	+0.0118/+0.0314	h6/h5	0,039	5
1	+0.0118/+0.0314	h6/h5	0,039	6

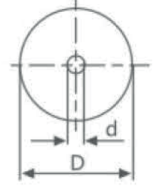
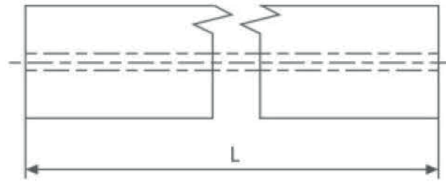
-  **MERKEZİ SOĞUTMA**
-  **DELİKLİ ÇUBUKLAR**
-  **RODS WITH CENTRAL**
-  **COOLANT HOLE**

 **EUROLOY**
CUTTING TOOLS



MERKEZİ SOĞUTMA DELİKLİ ÇUBUKLAR

RODS WITH CENTRAL COOLANT HOLE



Metrik Tip
Metric Type

ØD(mm)			Ød(mm)		Delik Sapması Hole Deviation	L(inch) (0,+5)
Taşlanmamış Unground	Tolerans Tolerance	Taşlanmış Ground h6/h5	Çap Diameter	Tolerans Tolerance		
4.3	+0/+0.2	4	0.6	±0.1	0.07	330
5.3	+0/+0.2	5	1.0	±0.1	0.07	330
6.3	+0/+0.2	6	1.0	±0.1	0.07	330
8.3	+0/+0.3	8	1.2	±0.15	0.07	330
10.3	+0/+0.3	10	2.0	±0.2	0.10	330
12.3	+0/+0.3	12	2.0	±0.2	0.10	330
14.3	+0/+0.4	14	2.0	±0.2	0.12	330
16.3	+0/+0.4	16	2.0	±0.2	0.12	330
18.3	+0/+0.5	18	3.0	±0.25	0.15	330
20.3	+0/+0.5	20	3.0	±0.25	0.15	330
22.3	+0/+0.5	22	3.0	±0.25	0.15	330
24.3	+0/+0.5	24	4.0	±0.25	0.15	330
26.3	+0/+0.5	26	4.0	±0.25	0.15	330
28.3	+0/+0.5	28	4.0	±0.25	0.15	330
30.3	+0/+0.5	30	5.0	±0.25	0.15	330
32.3	+0/+0.5	32	5.0	±0.25	0.15	330

Inç Tip
Inch Type

ØD(inch)	Taşlanmamış Tolerans Unground Tol.	Taşlanmış Ground	Ød(inch)		Hole Deviation Delik Sapması	L(inch) (0,+0.197)
			Çap Diameter	Tolerans Tolerance		
1/4	+0.0118/+0.0236	h6/h5	3/77	±0.0039	0.0027	13
9/32	+0.0118/+0.0236	h6/h5	3/77	±0.0039	0.0027	13
5/16	+0.0118/+0.0236	h6/h5	4/85	±0.0059	0.0027	13
25/64	+0.0118/+0.0236	h6/h5	1/16	±0.0059	0.0039	13
13/32	+0.0118/+0.0236	h6/h5	1/16	±0.0059	0.0039	13
277/64	+0.0118/+0.0236	h6/h5	1/16	±0.0059	0.0039	13
31/64	+0.0118/+0.0275	h6/h5	3/38	±0.0098	0.0047	13
1/2	+0.0118/+0.0275	h6/h5	3/38	±0.0098	0.0047	13
9/16	+0.0118/+0.0275	h6/h5	5/51	±0.0098	0.0047	13
5/8	+0.0118/+0.0275	h6/h5	2/17	±0.0098	0.0047	13
3/4	+0.0118/+0.0314	h6/h5	2/17	±0.0098	0.0059	13
13/16	+0.0118/+0.0314	h6/h5	2/17	±0.0098	0.0059	13



İKİ DÜZ SOĞUTMA

DELİKLİ ÇUBUKLAR

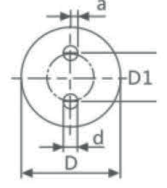
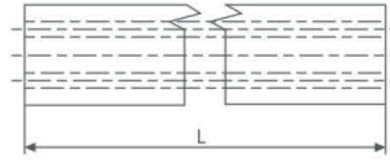
RODS WITH TWO

STRAIGHT COOLANT HOLES



İKİ DÜZ SOĞUTMA DELİKLİ ÇUBUKLAR

RODS WITH TWO STRAIGHT COOLANT HOLES

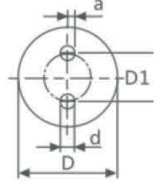
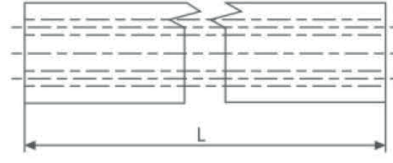


Metrik Tip
Metric Type

ØD(mm)		Taşlanmış Ground h6/h5	Ød(mm)		TkØ(mm)		Delik Sapması Hole Deviation	L(inch) (0,+5)
Taşlanmamış Unground	Tolerans Tolerance		Çap Diameter	Tolerans Tolerance	İki Delik Merkezinin Uzaklığı Bolt Core	Tolerans Tolerance		
6,3	+0/+0.2	6	0.8	±0,10	1.5	+0/-0.2	0.15	330
6,3	+0/+0.2	6	0.8	±0,10	3.0	+0/-0.2	0.15	330
7,3	+0/+0.3	7	1.0	±0,10	3,40	+0/-0.2	0.15	330
8,3	+0/+0.3	8	1.0	±0,10	2.60	+0/-0.2	0.15	330
9,3	+0/+0.3	9	1.0	±0,10	2,45	+0/-0.2	0.20	330
10,3	+0/+0.3	10	1.0	±0,15	2,60	+0/-0.3	0.20	330
10,3	+0/+0.3	10	1.4	±0,15	5,00	+0/-0.3	0.20	330
11,3	+0/+0.3	11	1.4	±0,15	4,85	+0/-0.3	0.30	330
12,3	+0/+0.3	12	1.2	±0,20	3,50	+0/-0.3	0.30	330
12,3	+0/+0.3	12	1.2	±0,20	3,60	+0/-0.3	0.30	330
12,3	+0/+0.3	12	1.2	±0,20	6,00	+0/-0.3	0.30	330
12,3	+0/+0.3	12	1,75	±0,20	3,50	+0/-0.3	0.30	330
13,3	+0/+0.4	13	1,8	±0,20	5,85	+0/-0.3	0.34	330
14,3	+0/+0.4	14	1.5	±0,20	5,00	+0/-0.3	0.37	330
14,3	+0/+0.4	14	1,75	±0,20	7,00	+0/-0.3	0.37	330
15,3	+0/+0.4	15	2.0	±0,20	6,85	+0/-0.3	0.40	330
16,3	+0/+0.4	16	1.5	±0,20	5,00	+0/-0.3	0.45	330
16,3	+0/+0.4	16	2.0	±0,20	8,00	+0/-0.3	0.45	330
17,3	+0/+0.5	17	2.0	±0,20	7,85	+0/-0.3	0.47	330
18,3	+0/+0.5	18	2.0	±0,20	6,20	+0/-0.3	0.50	330
18,3	+0/+0.5	18	2.0	±0,20	9,00	+0/-0.3	0.50	330
19,3	+0/+0.5	19	2.0	±0,20	8,85	+0/-0.3	0.50	330
20,3	+0/+0.5	20	2.0	±0,25	6,20	+0/-0.3	0.50	330
20,3	+0/+0.5	20	2.5	±0,25	10,00	+0/-0.3	0.50	330
20,3	+0/+0.5	20	2.5	±0,25	10,00	+0/-0.3	0.50	330
21,3	+0/+0.5	21	2.5	±0,25	9,80	+0/-0.3	0.50	330
22,3	+0/+0.5	22	2.5	±0,25	10,8	+0/-0.4	0.50	330
22,3	+0/+0.5	22	2.5	±0,25	11,00	+0/-0.4	0.50	330
23,3	+0/+0.5	23	2.5	±0,25	10,8	+0/-0.4	0.50	330
24,3	+0/+0.5	24	3.0	±0,25	11,75	+0/-0.4	0.50	330
25,3	+0/+0.5	25	3.0	±0,25	11,75	+0/-0.4	0.50	330
25,3	+0/+0.5	25	3.0	±0,25	11,70	+0/-0.4	0.50	330
25,3	+0/+0.5	25	3.0	±0,25	12,00	+0/-0.4	0.50	330
26,3	+0/+0.5	26	3.0	±0,25	13,00	+0/-0.5	0.50	330
28,3	+0/+0.5	28	2.5	±0,25	9,00	+0/-0.5	0.50	330
28,3	+0/+0.5	28	3.0	±0,25	14,00	+0/-0.5	0.50	330
28,3	+0/+0.5	28	3.0	±0,25	13,75	+0/-0.5	0.50	330
30,3	+0/+0.5	30	3.0	±0,25	14,00	+0/-0.5	0.50	330
30,3	+0/+0.5	30	3.0	±0,25	13,00	+0/-0.5	0.50	330
32,3	+0/+0.5	32	3.0	±0,25	14,00	+0/-0.5	0.50	330
32,3	+0/+0.5	32	3.0	±0,25	13,80	+0/-0.5	0.50	330
22.0	+0/+0.4	22	2.5	±0,25	11,00	+0/+0.4	0.50	330
25.0	+0/+0.5	25	3.0	±0,25	12,00	+0/+0.5	0.50	330
28.0	+0/+0.4	28	2.0	±0,20	6,40	+0/+0.4	0.50	330
30.0	+0/+0.5	30	3.0	±0,25	13,2	+0/+0.5	0.50	330
32.0	+0/+0.5	32	3.0	±0,25	14,00	+0/+0.5	0.50	330

İKİ DÜZ SOĞUTMA DELİKLİ ÇUBUKLAR

RODS WITH TWO STRAIGHT COOLANT HOLES



Inç Tip
Inch Type

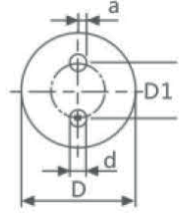
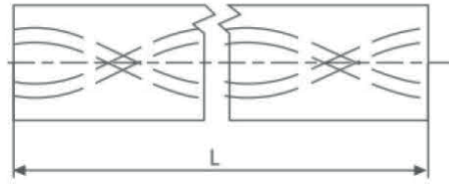
ØD(inch)	Taşlanmamış Tolerans Unground Tol.	Taşlanmış Ground	Ød(inch)		Hole Deviation Delik Sapması	L(inch) (0,+0.197)
			Çap Diameter	Tolerans Tolerance		
1/4	+0.0118/+0.0236	h6/h5	3/77	±0.0039	0.0027	13
9/32	+0.0118/+0.0236	h6/h5	3/77	±0.0039	0.0027	13
5/16	+0.0118/+0.0236	h6/h5	4/85	±0.0059	0.0027	13
25/64	+0.0118/+0.0236	h6/h5	1/16	±0.0059	0.0039	13
13/32	+0.0118/+0.0236	h6/h5	1/16	±0.0059	0.0039	13
277/64	+0.0118/+0.0236	h6/h5	1/16	±0.0059	0.0039	13
31/64	+0.0118/+0.0275	h6/h5	3/38	±0.0098	0.0047	13
1/2	+0.0118/+0.0275	h6/h5	3/38	±0.0098	0.0047	13
9/16	+0.0118/+0.0275	h6/h5	5/51	±0.0098	0.0047	13
5/8	+0.0118/+0.0275	h6/h5	2/17	±0.0098	0.0047	13
3/4	+0.0118/+0.0314	h6/h5	2/17	±0.0098	0.0059	13
13/16	+0.0118/+0.0314	h6/h5	2/17	±0.0098	0.0059	13

- İKİ SPİRAL SOĞUTMA
- DELİKLİ ÇUBUKLAR
- RODS WITH 2 SPRIAL
- COOLANT HOLES

EURLOY
CUTTING TOOLS



İKİ SPİRAL SOĞUTMA DELİKLİ ÇUBUKLAR (30°)
RODS WITH TWO SPIRAL COOLANT HOLES(30°)

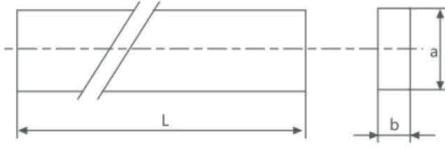


Metrik Tip
 Metric Type

ØD(mm)		Taşlanmış Ground h6/h5	Ød(mm)		TkØ(mm)		Eğim Pitch (±0.5°)	Delik Sapması Hole Deviation	L(mm) (0,+5°)
Taşlanmamış Unground	Tolerans Tolerance		Çap Diameter	Tolerans Tolerance	İki Delik Merkezinin Uzaklığı Bolt Core	Tolerans Tolerance			
6,0	+0.7/+1.1	6,0	0,70	±0,10	2,40	+0/-0.4	32,65	0,15	330
6,0	+0.7/+1.1	6,0	0,70	±0,10	2,60	+0/-0.4	32,65	0,15	330
8,0	+0.8/+1.2	8,0	1,00	±0,15	3,80	+0/-0.4	43,53	0,15	330
8,0	+0.8/+1.2	8,0	1,00	±0,15	4,00	+0/-0.4	43,53	0,15	330
10,0	+0.8/+1.2	10,0	1,40	±0,15	4,50	+0/-0.6	54,41	0,20	330
10,0	+0.8/+1.2	10,0	1,40	±0,15	4,80	+0/-0.6	54,41	0,20	330
10,0	+0.8/+1.2	10,0	1,40	±0,15	4,00	+0/-0.6	54,41	0,20	330
12,0	+0.9/+1.3	12,0	1,40	±0,15	5,85	+0/-0.8	65,30	0,30	330
12,0	+0.9/+1.3	12,0	1,40	±0,15	6,25	+0/-0.8	65,30	0,30	330
14,0	+0.9/+1.3	14,0	1,75	±0,20	6,70	+0/-0.8	76,18	0,40	330
14,0	+0.9/+1.3	14,0	1,75	±0,20	7,10	+0/-0.8	76,18	0,40	330
15,0	+0.9/+1.3	15,0	1,75	±0,20	7,70	+0/-0.8	81,62	0,40	330
16,0	+1.0/+1.4	16,0	1,75	±0,20	8,30	+0/-0.8	87,06	0,40	330
18,0	+1.0/+1.4	18,0	2,00	±0,25	9,25	+0/-0.8	97,95	0,50	330
18,0	+1.0/+1.4	18,0	2,00	±0,25	9,55	+0/-0.8	97,95	0,50	330
18,0	+1.0/+1.4	18,0	2,0	±0,25	8,50	+0/-0.8	97,95	0,50	330
20,0	+1.0/+1.4	20,0	2,00	±0,25	10,40	+0/-1,0	108,83	0,50	330
22,0	+1.0/+1.5	22,0	2,00	±0,25	11,10	+0/-1,0	119,71	0,50	330
22,0	+1.0/+1.5	22,0	2,00	±0,25	11,60	+0/-1,0	119,71	0,50	330
25,0	+1.1/+1.6	25,0	2,00	±0,25	12,80	+0/-1,0	136,03	0,50	330
25,0	+1.1/+1.6	25,0	2,00	±0,25	13,30	+0/-1,0	136,03	0,50	330

DİKDÖRTGEN LAMALAR

RECTANGULAR STRIPS



a(mm)	b(mm) (+0.15,+0.35)	L(mm) (0,+5)
3 +0.2/+0.4	2	330
4 +0.2/+0.4	3	330
5 +0.2/+0.4	2	330
5 +0.2/+0.4	3.5	330
5.5 +0.2/+0.4	1	330
6 +0.2/+0.4	3	330
8 +0.2/+0.4	2	330
8 +0.2/+0.4	3	330
10 +0.3/+0.5	2	330
10 +0.3/+0.5	2.5	330
10 +0.3/+0.5	3	330
10 +0.3/+0.5	3.5	330
12 +0.3/+0.5	2	330
12 +0.3/+0.5	2.5	330
12 +0.3/+0.5	3	330
12 +0.3/+0.5	3.5	330
12 +0.3/+0.5	4.5	330
12 +0.3/+0.5	5	330
14 +0.3/+0.5	3	330

a(mm)	b(mm) (+0.15,+0.35)	L(mm) (0,+5)
15 +0.4/+0.6	2	330
15 +0.4/+0.6	3.5	330
15 +0.4/+0.6	4	330
16 +0.4/+0.6	3	330
17 +0.4/+0.6	3	330
17 +0.4/+0.6	5	330
18 +0.4/+0.6	2	330
18 +0.4/+0.6	3.5	330
20 +0.4/+0.6	2	330
20 +0.4/+0.6	3	330
20 +0.4/+0.6	3.5	330
20 +0.4/+0.6	5	330
22 +0.4/+0.6	3.5	330
22 +0.4/+0.6	4	330
25 +0.4/+0.6	3.5	330
25 +0.4/+0.6	4	330
30 +0.4/+0.6	5	330
32 +0.4/+0.6	3	330
34 +0.4/+0.6	3	330

DİĞER TEKNİK STANDARTLAR

OTHER TECHNICAL STANDARDS

Çap Toleransı h6/h5(mm) Diameter Tolerance h6/h5(mm)

Diameter Ø	h6	h5
0<Ø≤3	+0/-0.006	+0/-0.004
3<Ø≤6	+0/-0.008	+0/-0.005
6<Ø≤10	+0/-0.009	+0/-0.006
10<Ø≤18	+0/-0.011	+0/-0.008
18<Ø≤30	+0/-0.013	+0/-0.009
30<Ø≤40	+0/-0.016	+0/-0.0011

Taşlanmamış Çubukların Doğrusallık Toleransları (mm) Unground Rods Straightness Tolerances (mm)

Diameter Ø	Tolerans / Tolerance
Ø≤6	0.60
Ø<6	0.50

Taşlanmış Çubukların Doğrusallık Toleransları (mm) Ground Rods Straightness Tolerances (mm)

Dia Ø \ L	L						
	0<L≤60	60<L≤80	80<L≤100	100<L≤120	120<L≤150	150<L≤200	200<L≤330
2≤Ø<4	0.005	0.008	0.012	0.020			
4≤Ø<6	0.005		0.008	0.012	0.020		
6≤Ø<8	0.005			0.008	0.015	0.020	
8≤Ø<10	0.005				0.008	0.015	
10≤Ø<16	0.005				0.008		0.015
16≤Ø<20	0.005					0.008	0.015
20≤Ø<40	0.005						0.008

Taşlanmış Çubukların Doğrusallık Toleransları (mm) Ground Rods Straightness Tolerances (mm)


Dia Ø \ L	L						
	0<L≤60	60<L≤80	80<L≤100	100<L≤120	120<L≤150	150<L≤200	200<L≤330
2≤Ø<40	0.003						



www.euroloy.com

Head Office - La sede centrale
Via Leonardo Da Vinci 4
20054 Segrate
Milano / Italia

 **info@euroloy.com**

 **[@euroloytools](https://www.instagram.com/euroloytools)**