

# PARTING & GROOVING

2026 | CATALOG

[www.euroloy.com](http://www.euroloy.com)

**EUROLOY**  
CARBIDE TOOLS

# TABLE OF Contents

Grooving Tools Coding System	C3
Parting & Grooving Tools Grade System	C3
MGMN Tools	C5
TD.. Tools	C10
DGN/DGR.. Tools	C13
ZT.. Tools	C16
GDM.. Tools	C19
GER/GIR Coding System	C21
GRIP/SPB Insert Features	C23
Cutting Blades	C24

## Grooving Tools Coding System

1	2	3	4	5	6	7	8
G	E	K	R	- 2525 -	T21	MG	03
Grooving	Machining	Insert Model	Direction	Dimensions	T-Max	Insert Code	Insert Size
	E: External Machining	G: General	R: Right				
	I: Internal Machining		L: Left				
	F: Face Grooving						

## Parting &amp; Grooving Tools Grade System

Grade	ISO	Coating	Features
TC1115 / TC2115	<b>P15</b>	CVD	CVD-coated grade designed for parting and grooving of forged steel and bearing steel. It offers stable edge performance and reliable tool life in high-speed and continuous machining.
TC1125 / TC2125	<b>P25</b>	CVD	CVD-coated general-purpose grade designed for steel machining. It offers high wear resistance and excellent edge stability, ensuring reliable performance at medium to high cutting speeds. Suitable for continuous and mildly interrupted applications, providing long tool life and stable machining.
TP4320 / TP3320	<b>M20</b>	PVD	TP4320 / TP3320 is a PVD-coated grade for heat-resistant alloys (HRSA) and stainless steels. It delivers high wear resistance and resistance to plastic deformation at mid to high cutting speeds and elevated temperatures, offering stable tool life in continuous cutting conditions. It is effective for medium to finish machining of hard-to-cut materials.
TP4330	<b>M30</b>	PVD	TP4330 is a general-purpose M30 grade for machining stainless steels. Its PVD coating provides good wear resistance and edge stability, ensuring stable tool life under medium cutting speeds and feeds.

## Parting &amp; Grooving Grade System

Parting &amp; Grooving

Grade	ISO	Coating	Features
TC2210	K10	CVD	TC2210 (K10) is a high-speed machining grade for continuous and light interrupted cutting, offering high wear resistance and stable tool life.
TC2215	K15	CVD	TC2215 is a CVD-coated K15 grade developed for turning ductile and grey cast iron under high feed and impact machining conditions. It offers high resistance to wear and chipping, ensuring stable tool life in interrupted cuts and vibration-prone applications. TC2215 minimizes flank and rake face wear, providing reliable and efficient machining of cast iron components.
TN7501	N10	-	TN7501 is a dedicated aluminum machining grade designed for high-speed cutting. Optimized surface reduces built-up edge formation and provide excellent surface finish.
TP2410	S10	CVD	TP2410 is a universal grade offering high wear and chipping resistance under continuous machining conditions at medium to high cutting speeds and elevated temperatures. It is suitable for medium machining of heat-resistant alloys and stainless steels.
TP2625	P20 M20	PVD	TP2625 is a tough, general-purpose grade for steels, stainless steels. Designed for stable performance in interrupted machining conditions. Its PVD-coated substrate provides a balanced combination of wear resistance and toughness, ensuring reliable tool life in semi-finishing operations.
TP4630	P30 M30	PVD	TP4630 is a general-purpose grade for machining steels, stainless steels. It provides stable cutting performance and helps achieve excellent surface finish across a wide range of applications.

# Parting & Grooving

## MGMN...

Product Image	Chipbreaker	ISO	Vc (m/min)	P				M			K	N	S	U		Dimensions (mm)					Technical Drawing	
				Insert Code	Fn (mm/rev)	(120-240)	(120-240)	(90-210)	(90-210)	(80-200)	(80-200)	(70-160)	(140-260)	(120-220)	(80-300)	(120-250)	b	r	l	d		t
						TC1115	TC2115	TC1125	TC2125	TP4320	TP3320	TP4330	TC2210	TC2215	TN7501	TP2410						
	G	MGMN 150	0.03 - 0.09	Δ		●	○	Δ	○				●	●	1.5	0.15	16	1.2	3.5			
		MGMN 200	0.03 - 0.40	Δ		●	○	Δ	○				●	●	2.0	0.2	16	1.6	3.5			
		MGMN 250	0.05 - 0.20	Δ		●	○	Δ	○				●	●	2.5	0.2	18.5	2.0	3.85			
		MGMN 300	0.05 - 0.15	Δ		●	○	Δ	○				●	●	3.0	0.3	21	2.35	4.8			
		MGMN 400	0.05 - 0.14	Δ		●	○	Δ	○				●	●	4.0	0.3	21	3.3	4.8			
	T	MGMN 150	0.03 - 0.09	Δ		●	○	Δ	○				●	●	1.5	0.15	16	1.20	3.5			
		MGMN 200	0.03 - 0.40	Δ		●	○	Δ	○				●	●	2.0	0.2	16	1.60	3.5			
		MGMN 250	0.05 - 0.20	Δ		●	○	Δ	○				●	●	2.5	0.2	18.5	1.60	3.85			
		MGMN 300	0.05 - 0.15	Δ		●	○	Δ	○				●	●	3.0	0.4	21	2.35	4.8			
		MGMN 400	0.04 - 0.30	Δ		●	○	Δ	○				●	●	4.0	0.4	21	3.3	4.8			
		MGMN 500	0.10 - 0.45	Δ		●	○	Δ	○				●	●	5.0	0.8	26	4.1	5.8			
		MGMN 600	0.05 - 0.20	Δ		●	○	Δ	○				●	●	6.0	0.80	26.20	5.0	5.8			
	M	MGMN 200	0.03 - 0.40	Δ		●	○	Δ	○				●	●	2.0	0.2	16	1.6	3.5			
		MGMN 250	0.05 - 0.20	Δ		●	○	Δ	○				●	●	2.5	0.2	18.5	2.0	3.85			
		MGMN 300	0.05 - 0.15	Δ		●	○	Δ	○				●	●	3.0	0.4	21	2.35	4.8			
		MGMN 400	0.05 - 0.14	Δ		●	○	Δ	○				●	●	4.0	0.4	21	3.3	4.8			
		MGMN 500	0.05 - 0.15	Δ		●	○	Δ	○				●	●	5.0	0.8	26	4.1	5.8			
		MGMN 600	0.05 - 0.20	Δ		●	○	Δ	○				●	●	6.0	0.8	26	5.0	5.8			
	M	MRMN 200	0.03 - 0.15	Δ		●	○	Δ	○				●	●	2.0	1.0	16	1.5	3.5			
		MRMN 300	0.05 - 0.15	Δ		●	○	Δ	○				●	●	3.0	1.5	21	2.35	4.8			
		MRMN 400	0.05 - 0.14	Δ		●	○	Δ	○				●	●	4.0	2.0	21	3.3	4.8			
		MRMN 500	0.05 - 0.15	Δ		●	○	Δ	○				●	●	5.0	2.5	26	4.1	5.8			
		MRMN 600	0.05 - 0.20	Δ		●	○	Δ	○				●	●	6.0	3.0	26	5.0	5.8			
	AL	MGGN 150	0.05 - 0.14									○		1.5	0.15	15.9	1.2	3.5				
		MGGN 200	0.03 - 0.55									●		2.0	0.2	16	1.6	3.5				
		MGGN 250	0.08 - 0.30										○		2.5	0.2	18.03	1.60		3.8		
		MGGN 300	0.08 - 0.25										●		3.0	0.4	21	2.35		4.8		
		MGGN 400	0.08 - 0.22										○		4.0	0.4	21	3.3		4.8		
		MGGN 500	0.10 - 0.20										○		5.0	0.8	26	4.1		5.8		
		MGGN 600	0.12 - 0.25										○		6.0	0.8	26	5.0		5.8		

Parting & Grooving

● Stock item


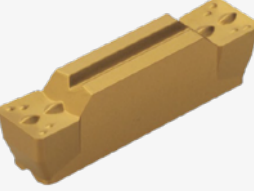

○ Non Stock item

△ Special order

## Parting &amp; Grooving

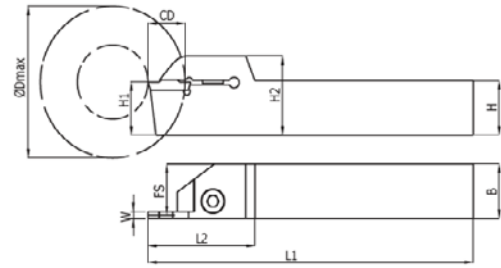
**MGMN...**

Parting &amp; Grooving

Chipbreaker Form	Chipbreaker Features
 <p data-bbox="263 750 343 772">MGMN-T</p>	<p data-bbox="518 504 1476 593">The sharp cutting edge ensures stable cutting action and controlled chip formation. An optimized chip control geometry provides reliable and efficient performance in both turning and grooving operations.</p> <p data-bbox="518 616 1476 683">This geometry is designed to deliver improved surface quality and extended tool life in turning and various grooving applications.</p>
 <p data-bbox="263 1086 343 1108">MGMN-M</p>	<p data-bbox="518 817 1476 907">The widely used flat surface geometry, combined with a specially designed chipbreaker, ensures smoother and more controlled chip formation. The centrally positioned chipbreaker optimizes chip flow and provides stable cutting performance.</p> <p data-bbox="518 929 1476 1019">A specially positioned convex cutting edge improves chip evacuation during external turning operations. Designed for reliable and balanced performance in both turning and grooving applications.</p>
 <p data-bbox="263 1400 343 1422">MGMN-G</p>	<p data-bbox="518 1198 1476 1265">The specially engineered chipbreaker design produces narrower and well-controlled chips. Improved chip flow enhances process reliability, especially in grooving applications.</p> <p data-bbox="518 1288 1476 1355">This geometry is optimized for grooving operations, providing smooth chip evacuation and stable cutting performance.</p>

# MGM..

## External Grooving Toolholders



Order Code	Stock Availability		Tool Dimensions (mm)										Insert Type	Spare Parts	
	L	R	Dmax	W	H	B	FS	L1	L2	H1	H2	CD / Tmax		Screw	Allen Key
GEKR/L-1212-T14MG-02	●	●	62	2	12	12	11	90	31	12	24	14	MGM.2	M5X16	
GEKR/L-1212-T14MG-03	●	●	62	3	12	12	10.5	90	31	12	24	14	MGM.3		
GEKR/L-1616-T17MG-1.5		●	62	1.5	16	16	14.5	125	41	16	28.5	17	MGM1.5		
GEKR/L-1616-T17MG-02	●	●	62	2	16	16	15	125	41	16	28.5	17	MGM.2		
GEKR/L-1616-T18MG-03	●	●	62	3	16	16	14.5	125	41	16	28.5	18	MGM.3		
GEKR/L-1616-T18MG-04	●	●	62	4	16	16	14	125	41	16	28.5	18	MGM.4		
GEKR/L-2020-T17MG-1.5		●	62	1.5	20	20	18.5	125	41	20	28.5	17	MGM1.5		
GEKR/L-2020-T17MG-02	●	●	62	2	20	20	19	125	41	20	28.5	17	MGM.2		
GEKR/L-2020-T18MG-03	●	●	62	3	20	20	18.5	125	41	20	28.5	18	MGM.3		
GEKR/L-2020-T18MG-04	●	●	62	4	20	20	18	125	41	20	28.5	18	MGM.4		
GEKR/L-2020-T21MG-05		●	62	5	20	20	17.5	125	41	20	5.6	21	MGM.5		
GEKR/L-2525-T18MG-02	●	●	62	2	25	25	24	150	45	25	35	18	MGM.2	M8X27	A4
GEKR/L-2525-T21MG-03	●	●	62	3	25	25	23.5	150	45	25	35	21	MGM.3		
GEKR/L-2525-T30MG-04	●	●	62	4	25	25	23	150	45	25	35	30	MGM.4		
GEKR/L-2525-T22MG-04	●	●	62	4	25	25	23	150	45	25	35	22	MGM.4		
GEKR/L-2525-T22MG-05	●	●	62	5	25	25	22.5	150	45	25	35	22	MGM.5		
GEKR/L-2525-T22MG-06	●	●	62	6	25	25	22	150	45	25	35	22	MGM.6		
GEKR/L-3232-T21MG-02		●	62	2	32	32	31	170	45	32	42	21	MGM.2		
GEKR/L-3232-T25MG-03		●	62	3	32	32	30.5	170	45	32	42	25	MGM.3		
GEKR/L-3232-T25MG-04		●	62	4	32	32	30	170	45	32	42	25	MGM.4		
GEKR/L-3232-T25MG-05		●	62	5	32	32	29.5	170	45	32	42	25	MGM.5		
GEKR/L-3232-T25MG-06		●	62	6	32	32	29	170	45	32	42	25	MGM.6		
GEKR/L-2525-T30MG-03		●	62	3	25	25	22	150	45	25	35	30	MGM.3		
GEKR/L-2525-T40MG-03		●	62	3	25	25	23.5	150	45	25	35	40	MGM.3		
GEKR/L-2525-T40MG-04		●	62	4	25	25	23	150	45	25	35	40	MGM.4		
GEKR/L-2525-T40MG-05		●	62	5	25	25	22.5	150	45	25	35	40	MGM.5		

Parting & Grooving

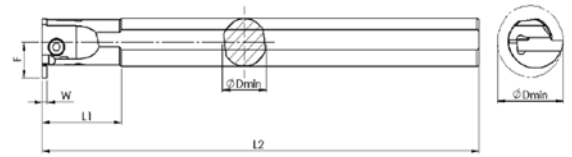
● Stock item

○ Non Stock item

△ Special order

## MGM..

### Internal Grooving Toolholders

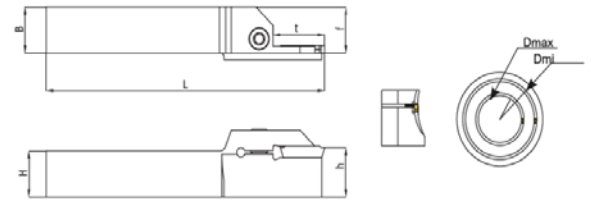


Parting &amp; Grooving

Order Code	Stock Availability		Tool Dimensions (mm)									
	L	R	D	D <sub>min</sub>	F	L1	L2	W	T <sub>max</sub>	Insert Type	Screw	Allen Key
GIKR/L -2016-T04MG-02	●	●	16	20	12	180	25	2	4	MGM.2	M4x10	A3
GIKR/L -2520-T04MG-02	●	●	20	25	14	200	30	2	4	MGM.2	M4x12	
GIKR/L -2520-T04.5MG-03	●	●	20	25	14,5	200	30	3	4,5	MGM.3		
GIKR/L -2520-T04.5MG-04	●	●	20	25	14,5	200	30	4	4,5	MGM.4		
GIKR/L -3125-T05.5MG-02	●	●	25	31	18	250	35	2	5,5	MGM.2	M6x16	A5
GIKR/L -3225-T06MG-03	●	●	25	32	16,5	250	35	3	6	MGM.3		
GIKR/L -3225-T06MG-04	●	●	25	32	18,5	250	30	4	6	MGM.4		
GIKR/L -3225-T06MG-05	●	●	25	32	18,5	250	30	5	6	MGM.5		
GIKR/L -3932-T06MG-02		●	32	39	22	250	30	2	6	MGM.2	M8x27	A4
GIKR/L -4232-T09MG-03		●	32	42	25	250	35	3	9	MGM.3		
GIKR/L -4232-T09MG-04		●	32	42	25	250	35	4	9	MGM.4		
GIKR/L -4232-T09MG-05		●	32	42	25	250	35	5	9	MGM.5		
GIKR/L -5240-T10MG-03		●	40	52	30	350	60	3	10	MGM.3		
GIKR/L -5240-T10MG-04		●	40	52	30	350	60	4	10	MGM.4		
GIKR/L -5240-T10MG-05		●	40	52	30	350	60	5	10	MGM.5		

## MGM..

### Face Grooving Toolholders



Order Code	Stock Availability		Tool Dimensions (mm)								Insert Type	Spare Parts	
	L	R	Dmin	Dmax	H	B	f	L1	h	Tmax		Screw	Allen Key
GFKR-2525-(30/40)-T17MG-03		●	30	40	25	25	26.7	150	25	17	MGM.3	M8X27	A4
GFKR-2525-(35/50)-T17MG-03		●	35	50	25	25	26.7	150	25	17	MGM.3		
GFKR-2525-(45/70)-T17MG-03		●	45	70	25	25	26.7	150	25	17	MGM.3		
GFKR-2525-(65/105)-T17MG-03		●	65	105	25	25	26.7	150	25	17	MGM.3		
GFKR-2525-(100/150)-T17MG-03		●	100	150	25	25	26.7	150	25	17	MGM.3		
GFKR-2525-(30/40)-T22MG-04		●	30	40	25	25	26.8	150	25	22	MGM.4		
GFKR-2525-(35/50)-T22MG-04		●	35	50	25	25	26.8	150	25	22	MGM.4		
GFKR-2525-(45/70)-T22MG-04		●	45	70	25	25	26.8	150	25	22	MGM.4		
GFKR-2525-(65/105)-T22MG-04		●	65	105	25	25	26.8	150	25	22	MGM.4		
GFKR-2525-(100/150)-T22MG-04		●	100	150	25	25	26.8	150	25	22	MGM.4		
GFKR-2525-(75/110)-T25MG-05		●	75	110	25	25	26.1	150	25	25	MGM.5		
GFKR-2525-(105/150)-T25MG-05		●	105	150	25	25	26.1	150	25	25	MGM.5		
GFKR-2525-(145/200)-T25MG-05		●	145	200	25	25	26.1	150	25	25	MGM.5		

● Stock item

○ Non Stock item

△ Special order

Parting & Grooving

**TD...**

Parting & Grooving

Product Image	ISO	Vc(m/min)	P				M			K	N	S	U	Dimensions (mm)					Technical Drawing	
			(120-240)	(120-240)	(90-210)	(90-120)	(80-200)	(80-200)	(70-160)	(140-260)	120-220	(80-300)	(120-250)							
			TC1115	TC2115	TC1125	TC2125	TP4320	TP3320	TP4330	TC2210	TC2215	TN7501	TP2410	TP2625	TP4630	INSL	RE	CDX		BW
	TDC2	0.05 - 0.18					○	○					●	●	20	0.20	19	1.7	2.0	
	TDC3	0.07 - 0.25					○	○					●	●	20	0.20	19	2.4	3.0	
	TDC4	0.08 - 0.30					○	○					●	●	20	0.30	19	3.0	4.0	
	TDC5	0.09 - 0.34					○	○					●	●	25	0.30	24	4.0	5.0	
	TDJ2	0.04 - 0.12					○	○					●	●	20	0.20	19	1.7	2.0	
	TDJ3	0.04 - 0.16					○	○					●	●	20	0.20	19	2.4	3.0	
	TDJ4	0.05 - 0.18						○					●	●	20	0.30	19	3.0	4.0	
	TDT3.00E-0.40	0.07 - 0.15											●	●	20	0.40		2.25	3.0	
	TDT4.00E-0.40	0.09 - 0.18											●	●	20	0.40		3.05	4.0	
	TDT2E-1.0-RU	0.05 - 0.12											●	●	20	1.0		1.70	2.0	
	TDT3E-1.5-RU	0.03 - 0.10					○	○					●	●	20	1.50		2.40	3.0	
	TDT4E-2.0-RU	0.09 - 0.18					○	○					●	●	20	2.0		3.0	4.0	
	TDXU 2E-0.3	0.03 - 0.20											●	●	20	0.30		1.7	2.0	
	TDXU 3E-0.3	0.07 - 0.22						○					●	●	20	0.30		2.2	3.0	
	TDXU 4E-0.4	0.08 - 0.27						○					●	●	20	0.40		3.0	4.0	
	TDXU 4E-0.8	0.08 - 0.27											●	●	20	0.80		3.0	4.0	

● Stock item




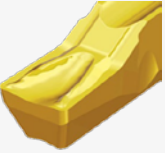
○ Non Stock item

△ Special order

## Parting &amp; Grooving

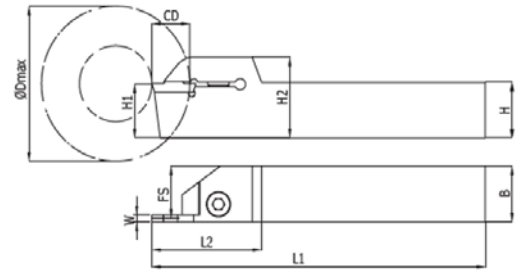
## TD...

---

Chipbreaker Form	Chipbreaker Features
 <p data-bbox="284 629 325 654">TDC</p>	<p data-bbox="517 499 1469 577">Double-ended inserts featuring a C-type chip breaker, designed for parting and grooving operations in hard materials and demanding applications, ensuring stable performance at medium to high feed rates when machining steel, alloy steel, and stainless steel.</p>
 <p data-bbox="284 891 325 913">TDJ</p>	<p data-bbox="517 745 1469 824">TDJ (Double-ended) inserts with a J-type chip breaker are designed for parting and grooving of soft materials, tubes, small-diameter and thin-walled components, providing smooth cutting at low to medium feed rates with reduced cutting forces and minimal burr formation.</p>
 <p data-bbox="284 1104 325 1126">TDT</p>	<p data-bbox="517 987 1422 1037">Precision double-ended inserts specifically designed for external grooving operations, ensuring accurate machining and stable performance.</p>
 <p data-bbox="276 1335 333 1355">TDXU</p>	<p data-bbox="517 1223 1417 1272">Double-ended, pressed-type multifunctional inserts, ideal as a first-choice solution for general-purpose external, internal, and face groove-turning applications.</p>

**TD..**

External Grooving Toolholders



Parting & Grooving

Order Code	Stock Availability		Tool Dimensions (mm)										Insert Type	Spare Parts	
	L	R	Dmax	W	H	B	FS	L1	L2	H1	H2	Tmax		Screw	Allen Key
GETR-1212-T14TD-02		●	62	2	12	12	11	90	31	12	24	14	TD.2	M5X16	A4
GETR-1212-T14TD-03		●	62	3	12	12	10.5	90	31	12	24	14	TD.3		
GETR-1616-T18TD-02		●	62	2	16	16	15	125	41	16	28.5	18	TD.2	M8X27	
GETR-1616-T18TD-03		●	62	3	16	16	14.5	125	41	18	28.5	18	TD.3		
GETR-1616-T18TD-04		●	62	4	16	16	14	125	41	16	28.5	18	TD.4	M8X27	
GETR-2020-T18TD-02		●	62	2	20	20	19	125	41	20	28.5	18	TD.2		
GETR-2020-T18TD-03		●	62	3	20	20	18.5	125	41	20	28.5	18	TD.3	M8X27	
GETR-2020-T18TD-04		●	62	4	20	20	18	125	41	20	28.5	18	TD.4		
GETR-2525-T21TD-02		●	62	2	25	25	24	150	45	25	35	21	TD.2	M8X27	
GETR-2525-T21TD-03		●	62	3	25	25	23.5	150	45	25	35	21	TD.3		
GETR-2525-T21TD-04		●	62	4	25	25	23	150	45	25	35	21	TD.4	M8X27	
GETR-2525-T21TD-05		●	62	5	25	25	22.5	150	45	25	35	21	TD.5		
GETR-3232-T23TD-03		●	62	3	32	32	30.5	170	45	32	42	23	TD.3	M8X27	
GETR-3232-T23TD-04		●	62	4	32	32	30	170	45	32	42	23	TD.4		

● Stock item

○ Non Stock item


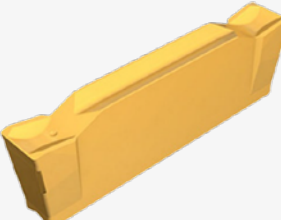
△ Special order

## Parting & Grooving

### DGN/DGR..

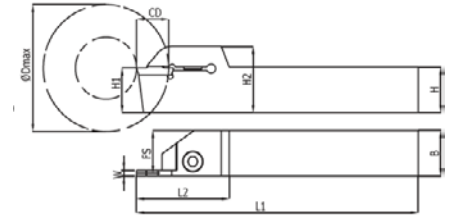
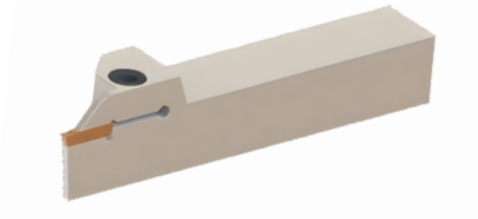
Product Image	ISO	Vc (m/min)	P				M			K	N	S	U	Dimensions (mm)			Technical Drawing	
			(120-240)	(120-240)	(90-210)	(90-210)	(80-200)	(80-200)	(70-160)	(140-260)	(120-220)	(80-300)	(120-250)					
			TC1115	TC2115	TC1125	TC2125	TP4320	TP3320	TP4330	TC2210	TC2215	TN7501	TP2410	TP2625	TP4630	INSL		CW
	DGN2002C	0.05 - 0.16												•	19.9	2.0	0.2	
	DGN2202C	0.05 - 0.16												•	19.8	2.2	0.2	
	DGN2202J	0.04 - 0.12												•	19.8	2.2	0.2	
	DGN3102C	0.1 - 0.25												•	20.1	3.1	0.2	
	DGN4003C	0.1 - 0.3												•	18.8	4.0	0.3	
	DGR2202C-6D	0.04 - 0.12												•	20.8	2.2	0.2	
	DGR3102C-6D	0.08 - 0.18												•	21	3.1	0.2	

Parting & Grooving

Chipbreaker Form	Chipbreaker Features
 <p>J-FORM</p>	<p>The J chipformer combines the positive geometry of the J-type with a strengthened negative front edge. It is optimized for machining soft materials, delivering stable performance at low to medium feed rates.</p>
 <p>C-FORM</p>	<p>Designed for parting bars, hard materials, and demanding applications. Features a positive rake geometry with a single pocket, combined with a negative land and reinforced shoulders. Suitable for medium to high feed rates and stable cutting performance under tough conditions.</p>

**DGN..**

External Grooving Toolholders

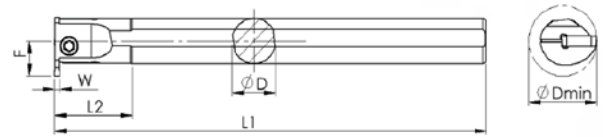
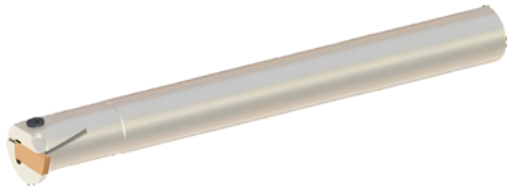


Parting & Grooving

Order Code	Stock Availability		Tool Dimensions (mm)											Insert Type	Spare Parts	
	L	R	Dmax	W	H	B	FS	L1	L2	H1	H2	CD / Tmax	Screw		Allen Key	
GEIR/L-1212-T14DG-02	●	●	62	2	12	12	11	90	31	12	24	14	DGN-2	M5X16	A4	
GEIR/L-1212-T14DG-03	●	●	62	3	12	12	10.5	90	31	12	24	14	DGN-3			
GEIR/L-1616-T18DG-02	●	●	62	2	16	16	15	125	43	16	28.5	18	DGN-2	M8X27		
GEIR/L-1616-T18DG-03	●	●	62	3	16	16	14.5	125	43	16	28.5	18	DGN-3			
GEIR/L-1616-T18DG-04	●	●	62	4	16	16	14	125	43	16	28.5	18	DGN-4			
GEIR/L-2020-T18DG-02	●	●	62	2	20	20	19	125	43	20	28.5	18	DGN-2			
GEIR/L-2020-T18DG-03	●	●	62	3	20	20	18.5	125	43	20	28.5	18	DGN-3			
GEIR/L-2020-T18DG-04	●	●	62	4	20	20	18	125	43	20	28.5	18	DGN-4			
GEIR/L-2020-T22DG-05		●	62	5	20	20	17.5	125	43	20	28.5	22	DGN-5			
GEIR/L-2525-T22DG-02	●	●	62	2	25	25	24	150	47	25	35	22	DGN-2			
GEIR/L-2525-T22DG-03	●	●	62	3	25	25	23.5	150	47	25	35	22	DGN-3			
GEIR/L-2525-T22DG-04	●	●	62	4	25	25	23	150	47	25	35	22	DGN-4			
GEIR/L-2525-T22DG-05	●	●	62	5	25	25	22.5	150	47	25	35	22	DGN-5			
GEIR/L-2525-T22DG-06		●	62	6	25	25	22.5	150	47	25	35	22	DGN-6			
GEIR/L-3232-T22DG-03		●	62	3	32	32	30.5	170	47	32	42	22	DGN-3			
GEIR/L-3232-T22DG-04		●	62	4	32	32	30	170	47	32	42	22	DGN-4			
GEIR/L-3232-T22DG-05		●	62	5	32	32	29.5	170	47	32	42	22	DGN-5			
GEIR/L-3232-T22DG-06		●	62	6	32	32	29.5	170	47	32	42	22	DGN-6			
GEIR/L-2525-T40DG-03		●	62	3	25	25	23.5	150	47	25	35	40	DGN-3			
GEIR/L-2525-T40DG-04		●	62	4	25	25	23	150	47	25	35	40	DGN-4			

## DGN..

### Internal Grooving Toolholders


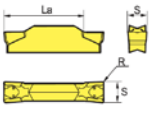



Order Code	Stock Availability		Tool Dimensions (mm)							Insert Type	Spare Parts	
	L	R	D	D min	F	L1	L2	W	Tmax		Screw	Allen Key
GIIR/L 2025-T4.5DG-02		●	20	25	14	200	30	2	4.5	DGN-2	M4X12	A3
GIIR/L 2025-T4.5DG-03		●	20	25	14	200	30	3	4.5	DGN-3		
GIIR/L 2025-T4.5DG-04		●	20	25	14	200	30	4	4.5	DGN-4		
GIIR/L 2525-T06DG-02		●	25	32	18.5	250	40	2	6	DGN-2	M6X16	A5
GIIR/L 2532-T06DG-03		●	25	32	18.5	250	40	3	6	DGN-3		
GIIR/L 2532-T06DG-04		●	25	32	18.5	250	40	4	6	DGN-4		
GIIR/L 4132-T8.5DG-02		●	32	41	24.5	250	45	2	8.5	DGN-2	M8X27	A4
GIIR/L 4132-T8.5DG-03		●	32	41	24.5	250	45	3	8.5	DGN-3		
GIIR/L 4132-T8.5DG-04		●	32	41	24.5	350	45	4	8.5	DGN-4		

Parting & Grooving

**ZT...**

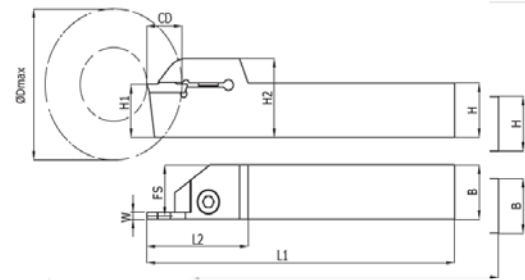
Parting & Grooving

Product Image	ISO	Vc (m/min)	P				M			K	N	S	U		Dimensions (mm)	Technical Drawing		
			(120-240)	(120-240)	(90-210)	(90-210)	(80-200)	(80-200)	(70-160)	(140-260)	(120-220)	(80-300)	(120-250)					
	Insert Code	Fn (mm/rev)	TC1115	TC2115	TC1125	TC2115	TP4320	TP3320	TP4330	TC2210	TC2215	TN7501	TP2410	TP2620	TP4630		La	S
	ZTED02503-MG	0.05 - 0.2											○	○	17	2.5	0.3	
	ZTFD0303-MG	0.05 - 0.2											○	△	17	3.0	0.3	
	ZTGD0404-MG	0.20 - 0.6											○	△	22	4.0	0.4	
	ZTHD0504-MG	0.05 - 0.2											△	△	22	5.0	0.4	
	ZTKD0608-MG	0.05 - 0.7											△	△	22	6.0	0.8	

Chipbreaker Form	Chipbreaker Features
 MG	The MG chipformer is designed for both parting, grooving and turning operations. Its versatile geometry ensures stable chip control at medium feed rates, making it suitable for a wide range of applications. The positive cutting geometry provides smooth cutting action and reliable performance.

## ZT..

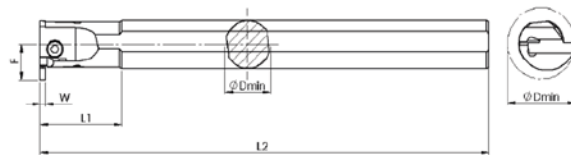
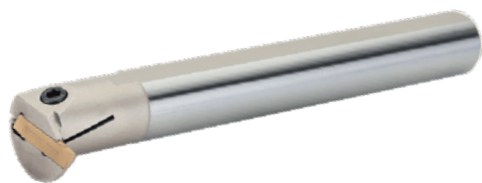
### External Grooving Toolholders



Order Code	Stock Availability		Tool Dimensions (mm)										Insert Type	Spare Parts	
	L	R	Dmax	W	H	B	FS	L1	L2	H1	H2	CD / Tmax		Screw	Allen Key
GEZR/L-1616-T17ZT-02	●	●	62	2	16	16	15	125	41	16	24.50	17	ZT.D-2	M8X27	A4
GEZR/L-1616-T18ZT-03	●	●	62	3	16	16	14.50	125	41	16	24.50	18	ZT.D-3		
GEZR/L-1616-T18ZT-04	●	●	62	4	16	16	14	125	41	16	24.50	18	ZT.D-4		
GEZR/L-1616-T18ZT-05	●	●	62	5	16	16	13.50	125	41	16	24.50	18	ZT.D-5		
GEZR/L-2020-T17ZT-2.5	●	●	62	2.5	20	20	18.75	125	41	20	28.50	17	ZT.D-2.5		
GEZR/L-2020-T22ZT-2.5		●	62	2.5	20	20	18.75	125	41	20	28.50	22	ZT.D-2.5		
GEZR/L-2020-T17ZT-02	●	●	62	2	20	20	19	125	41	20	28.50	17	ZT.D-2		
GEZR/L-2020-T18ZT-03	●	●	62	3	20	20	18.50	125	41	20	28.50	18	ZT.D-3		
GEZR/L-2020-T18ZT-04	●	●	62	4	20	20	18	125	41	20	28.50	18	ZT.D-4		
GEZR/L-2020-T21ZT-05	●	●	62	5	20	20	17.50	125	41	20	28.50	21	ZT.D-5		
GEZR/L-2020-T21ZT-06		●	62	6	20	20	17	125	41	20	28.50	21	ZT.D-6		
GEZR/L-2525-T21ZT-2.5	●	●	62	2.5	25	25	23.75	150	45	25	35	21	ZT.D-2.5		
GEZR/L-2525-T21ZT-02	●	●	62	2	25	25	24	150	45	25	35	21	ZT.D-2		
GEZR/L-2525-T21ZT-03	●	●	62	3	25	25	23.50	150	45	25	35	21	ZT.D-3		
GEZR/L-2525-T21ZT-04	●	●	62	4	25	25	23	150	45	25	35	21	ZT.D-4		
GEZR/L-2525-T22ZT-05	●	●	62	5	25	25	22.50	150	45	25	35	22	ZT.D-5		
GEZR/L-2525-T22ZT-06		●	62	6	25	25	22	150	45	25	35	22	ZT.D-6		
GEZR/L-3232-T25ZT-04		●	62	4	32	32	30	170	45	32	42	25	ZT.D-4		
GEZR/L-3232-T25ZT-05		●	62	5	32	32	29.50	170	45	32	42	25	ZT.D-5		
GEZR/L-3232-T25ZT-06		●	62	6	32	32	29	170	45	32	42	25	ZT.D-6		

## ZT..

### Internal Grooving Toolholders




Parting & Grooving

Order Code	Stock Availability		Tool Dimensions (mm)							Insert Type	Spare Parts	
	L	R	D	D min	F	L1	L2	W	Tmax		Screw	Allen Key
GIZR/L-2016-T04ZT-02		●	16	20	12	180	2	4	4	ZT.D-2	M4X10	A3
GIZR/L-2520-T4.5ZT-02		●	20	25	14.5	200	2	4	4,5	ZT.D-2	M4X12	
GIZR/L-2520-T4.5ZT-03		●	20	25	14.5	200	3	1.5	4.5	ZT.D-3		
GIZR/L-3225-T06ZT-02		●	25	32	18.5	250	2	4	6	ZT.D-2		
GIZR/L-3225-T06ZT-03		●	25	32	18.5	250	3	2	6	ZT.D-3	M6X16	A5
GIZR/L-3225-T06ZT-04		●	25	32	18.5	250	4	2	6	ZT.D-4		
GIZR/L-4232-T08ZT-03		●	32	42	25	250	3	2	8	ZT.D-3		
GIZR/L-4232-T09ZT-04		●	32	42	25	250	4	3	9	ZT.D-4	M8X27	A4
GIZR/L-5240-T10ZT-05		●	40	52	30	350	5	3	10	ZT.D-5		

## Parting & Grooving

### GDM...

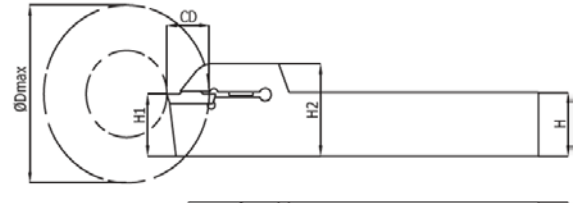
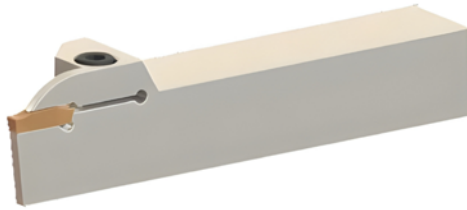
Product Image	ISO	Vc (m/min)	P				M			K	N	S	U		Dimensions (mm)				Technical Drawing
			(120-240)	(120-240)	(90-210)	(90-120)	(80-200)	(80-200)	(70-160)	(140-260)	(120-220)	(80-300)	(120-250)			L	RE	M	
	Insert Code	Fn (mm/rev)	TC1115	TC2115	TC1125	TC2125	TP4320	TP3320	TP4330	TC2210	TC2215	TN7501	TP2410	TP2625	TP4630				
	GDM2020N-020PM	0.06 - 0.12												Δ	Δ	20	0.20	1.50	2.0
	GDM2520N-020PM	0.06 - 0.12												Δ	Δ	20	0.20	1.94	2.5
	GDM3020N-025PM	0.08 - 0.16												Δ	Δ	20	0.25	2.28	3.0
	GDM4020N-040PM	0.10 - 0.22												○	○	20	0.40	3.30	4.0
	GDM5020N-080PM	0.15 - 0.30												○	○	20	0.80	4.19	5.0

Chipbreaker Form	Chipbreaker Features
 <p>PM</p>	<p>The PM chipbreaker is a general-purpose geometry designed for parting-off operations. It provides stable cutting performance at medium feed rates and ensures reliable chip control across wide range of materials. Balanced cutting forces make it suitable for a wide range of applications.</p>

Parting & Grooving

**GDM..**

External Grooving Toolholders



Parting & Grooving

Order Code	Stock Availability		Tool Dimensions (mm)											Insert Type	Spare Parts	
	L	R	Dmax	W	H	B	FS	L1	L2	H1	H2	CD / Tmax	Screw		Allen Key	
GEYR/L-1212-T12GD-02		●	62	2	12	12	11	125	41	12	20.5	12	GDM-2	M5X16	A4	
GEYR/L-1212-T12GD-03		●	62	3	12	12	10.5	125	41	12	20.5	12	GDM-3			
GEYR/L-1616-T17GD-02	●	●	62	2	16	16	15	125	41	16	24.5	17	GDM-2	M8X27		
GEYR/L-1616-T20GD-03	●	●	62	3	16	16	14.5	125	41	16	24.5	20	GDM-3			
GEYR/L-2020-T17GD-02	●	●	62	2	20	20	19	125	41	20	28.5	17	GDM-2	M8X27		
GEYR/L-2020-T20GD-03	●	●	62	3	20	20	18.5	125	43	20	28.5	20	GDM-3			
GEYR/L-2525-T10GD-02		●	62	2	25	25	24	150	45	25	35	10	GDM-2	M8X27		
GEYR/L-2525-T21GD-02	●	●	62	2	25	25	24	150	45	25	35	21	GDM-2			
GEYR/L-2525-T21GD-03	●	●	62	3	25	25	23.5	150	45	25	35	21	GDM-3	M8X27		
GEYR/L-2525-T25GD-03		●	62	3	25	25	23.5	150	45	25	35	25	GDM-3			
GEYR/L-2525-T25GD-04		●	62	4	25	25	23	150	45	25	35	25	GDM-4	M8X27		

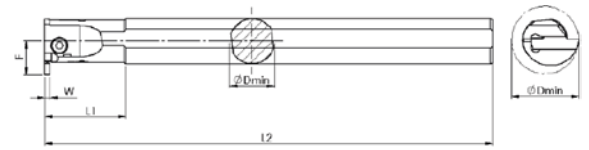
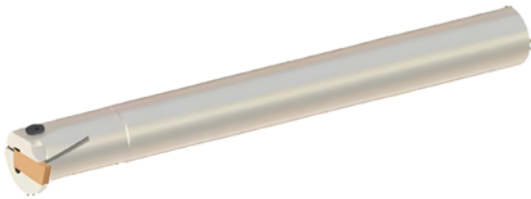
● Stock item

○ Non Stock item

△ Special order

## GDM..

### Internal Grooving Toolholders



Order Code	Stock Availability		Tool Dimensions (mm)							Insert Type	Spare Parts	
	L	R	D	D min	F	L1	L2	W	Tmax		Screw	Allen Key
GIYR/L-1816-T4.5GD-02		●	16	18	9.5	180	25	2	4.5	GDM-2	M4X12	A3
GIYR/L-1816-T4.5GD-03		●	16	18	9.5	180	25	3	4.5	GDM-3		
GIYR/L-2520-T4GD-02		●	20	25	14	200	30	2	4	GDM-2		
GIYR/L-2520-T4GD-03		●	20	25	14	200	30	3	4	GDM-3		
GIYR/L-2520-T5.5GD-04		●	20	25	14	200	30	4	5.5	GDM-4		
GIYR/L-2520-T4GD-02		●	20	25	14	200	30	2	4	GDM-2		
GIYR/L-2520-T4GD-03		●	20	25	14	200	30	3	4	GDM-3		
GIYR/L-3125-T5GD-02		●	25	31	18	250	35	2	5	GDM-2		
GIYR/L-3125-T5.5GD-03		●	25	31	18	250	35	3	5.5	GDM-3		
GIYR/L-3125-T12GD-04		●	25	31	24.5	250	35	4	12	GDM-4		
GIYR/L-3125-T6GD-04		●	25	31	18	250	35	4	6	GDM-4		
GIYR/L-4232-T9GD-03		●	32	42	25	250	35	3	9	GDM-3	M8X27	A4
GIYR/L-4232-T9GD-04		●	32	42	25	250	35	4	9	GDM-4		
GIYR/L-4232-T12GD-04		●	32	42	28	350	60	4	12	GDM-4		
GIYR/L-5240-T10GD-04		●	40	52	30	350	60	4	10	GDM-4		

## GER/GIR...

### GER-GIL Coding System

1	2	3	4	5	6	7
16	G	E	R	0.50	-	005 TP4625
Size 16mm 11mm	Grooving	Type E:External I:Internal	Direction R: Right L: Left	Cutting Edge Width 0.05 - 1.0mm	Corner Radius 005 : R0.05 010 : R0.10	Grade

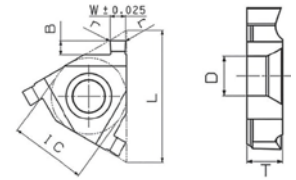
● Stock item

○ Non Stock item


△ Special order

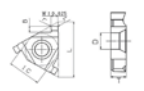
Parting & Grooving

**GER/GIR...**



Parting & Grooving

Product Image	ISO	Vc (m/min)	P				M		K		N	S	U				Dimensions (mm)							Technical Drawing
			(120-240)	(120-240)	(90-210)	(90-210)	(80-200)	(80-200)	(70-160)	(140-260)	(120-220)	(80-300)	(120-250)											
	Insert Code	Fn (mm/rev)	TC1115	TC2115	TC1125	TC2125	TP4320	TP3320	TP4330	TC2210	TC2215	TN7501	TP2410	TP2625	TP4625	TP4630	L	IC	T	D	W	B	r	
	11GER/GIR050-005	0.03 - 0.06													○	11	6.35	3.18	3.1	0.5	1.0	0.05		
	11GER/GIR060-005	0.03 - 0.07													○	11	6.35	3.18	3.1	0.6	1.0	0.05		
	11GER/GIR070-005	0.04 - 0.08													○	11	6.35	3.18	3.1	0.7	1.2	0.05		
	11GER/GIR080-005	0.04 - 0.09													○	11	6.35	3.18	3.1	0.8	1.2	0.05		
	11GER/GIR090-005	0.05 - 0.10													○	11	6.35	3.18	3.1	0.9	1.2	0.05		
	11GER/GIR100-010	0.05 - 0.10													○	11	6.35	3.18	3.1	1.0	1.5	0.1		
	11GER/GIR110-010	0.05 - 0.10													○	11	6.35	3.18	3.1	1.1	1.5	0.1		
	11GER/GIR120-010	0.06 - 0.12													○	11	6.35	3.18	3.1	1.2	1.5	0.1		
	11GER/GIR130-010	0.06 - 0.12													○	11	6.35	3.18	3.1	1.3	1.5	0.1		
	11GER/GIR140-010	0.07 - 0.14													○	11	6.35	3.18	3.1	1.4	1.5	0.1		
	11GER/GIR150-010	0.07 - 0.15													○	11	6.35	3.18	3.1	1.5	1.5	0.1		
	11GER/GIR160-010	0.08 - 0.16													○	11	6.35	3.18	3.1	1.6	1.4	0.1		
	11GER/GIR170-010	0.08 - 0.16													○	11	6.35	3.18	3.1	1.7	1.4	0.1		
	11GER/GIR180-010	0.08 - 0.18													○	11	6.35	3.18	3.1	1.8	1.3	0.1		
	11GER/GIR200-010	0.09 - 0.20													○	11	6.35	3.18	3.1	2.0	1.2	0.1		
	16GER/GIR050-005	0.03 - 0.06													●	16	9.525	3.65	4	0.5	1.6	0.05		
	16GER/GIR060-005	0.03 - 0.07													●	16	9.525	3.65	4	0.6	1.6	0.05		
	16GER/GIR070-005	0.04 - 0.08													●	16	9.525	3.65	4	0.7	1.6	0.05		
	16GER/GIR075-005	0.04 - 0.08													●	16	9.525	3.65	4	0.75	1.6	0.05		
	16GER/GIR080-005	0.04 - 0.09													●	16	9.525	3.65	4	0.8	1.6	0.05		
	16GER/GIR095-005	0.05 - 0.10													●	16	9.525	3.65	4	0.95	1.6	0.05		
	16GER/GIR100-010	0.05 - 0.10													○	16	9.525	3.65	4	1.0	1.8	0.1		
	16GER/GIR110-010	0.05 - 0.11													●	16	9.525	3.65	4	1.1	1.8	0.1		
	16GER/GIR115-010	0.05 - 0.11													●	16	9.525	3.65	4	1.15	1.8	0.1		
	16GER/GIR120-010	0.06 - 0.12													●	16	9.525	3.65	4	1.2	1.8	0.1		
	16GER/GIR130-010	0.06 - 0.12													●	16	9.525	3.65	4	1.3	1.8	0.1		
	16GER/GIR140-010	0.07 - 0.15													○	16	9.525	3.65	4	1.4	1.8	0.1		
	16GER/GIR145-010	0.07 - 0.15													○	16	9.525	3.65	4	1.45	1.8	0.1		
	16GER/GIR150-010	0.07 - 0.15													○	16	9.525	3.65	4	1.5	1.8	0.1		
	16GER/GIR160-010	0.08 - 0.16													○	16	9.525	3.65	4	1.6	1.8	0.1		
	16GER/GIR175-010	0.08 - 0.18													○	16	9.525	3.65	4	1.75	1.8	0.1		
	16GER/GIR180-010	0.08 - 0.18													○	16	9.525	3.65	4	1.8	1.8	0.1		
	16GER/GIR200-010	0.09 - 0.20													●	16	9.525	3.65	4	2.0	1.8	0.1		
	16GER/GIR215-010	0.10 - 0.22													○	16	9.525	3.65	4	2.15	2.0	0.2		
	16GER/GIR225-020	0.10 - 0.22													○	16	9.525	3.65	4	2.25	2.0	0.2		
	16GER/GIR230-020	0.10 - 0.23													○	16	9.525	3.65	4	2.3	2.0	0.2		
	16GER/GIR250-020	0.12 - 0.26													○	16	9.525	3.65	4	2.5	2.0	0.2		
	16GER/GIR265-020	0.12 - 0.28													○	16	9.525	3.65	4	2.65	2.0	0.2		
	16GER/GIR300-020	0.15 - 0.32													○	16	9.525	3.65	4	3.0	2.0	0.2		



## Parting & Grooving

### GRIP...

Product Image	ISO	Vc(m/min)	P				M			K	N	S	U		Dimensions (mm)			Technical Drawing
			(120-240)	(120-240)	(90-210)	(90-210)	(80-200)	(80-200)	(70-160)	(140-260)	(120-220)	(80-300)	(120-250)	INSL	CW	RE		
			TC1115	TC2115	TC1125	TC2125	TP4320	TP3320	TP4330	TC2210	TC2215	TN7501	TP2410				TP2625	
	GRIP3003Y	0.07 - 0.19												Δ	15.8	3.0	0.3	
	GRIP4004Y	0.09 - 0.24												Δ	19	4.0	0.4	
	GRIP5005Y	0.11 - 0.30												Δ	19	5.0	0.5	

### SPB...

Product Image	ISO	Vc(m/min)	P				M			K	N	S	U		Dimensions (mm)			Technical Drawing
			(120-240)	(120-240)	(90-210)	(90-210)	(80-200)	(80-200)	(70-160)	(140-260)	(120-220)	(80-300)	(120-250)	W	l	r		
			TC1115	TC2115	TC1125	TC2125	TP4320	TP3320	TP4330	TC2210	TC2215	TN7501	TP2410				TP2625	
	SPB 200	0.05 - 0.15	●											●	2.2	9.3	0.2	
	SPB 300	0.05 - 0.15	●											●	3.1	11.3	0.2	
	SPB 400	0.05 - 0.15	●											●	4.1	11.3	0.25	
	SPB 500	0.10 - 0.40	●											●	5.1	11.4	0.3	
	SPB 600	0.12 - 0.50	●											○	6.4	11.4	0.35	

● Stock item

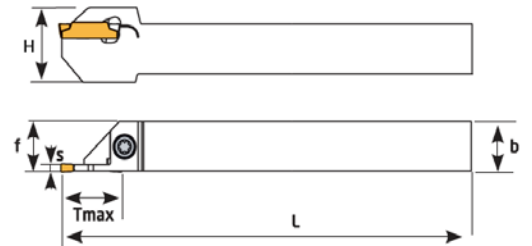
○ Non Stock item

△ Special order

**MGMN..**

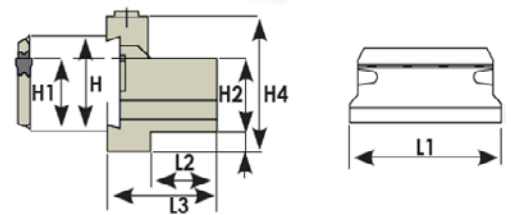
Cutting Blades

Order Code	Dimensions (mm)				Insert
	H	b	s	L	
EMB-232	32	25	2	150	MGMN 200
EMB-332	32	25	2,45	150	MGMN 300
EMB-432	32	25	3,45	150	MGMN 400



Block for Blades

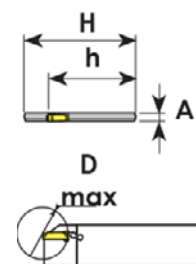
Order Code	Dimensions (mm)					
	H	H1	H2	L1	L2	L3
ETB-2026	26	21,4	20	87	19	33
ETB-2526	26	24,4	25	110	20	34
ETB-2032	32	25	20	110	19	35
ETB-2532	32	25	25	110	20	36
ETB-3232	32	25	32	110	28	44



**SPB..**

Cutting Blades

Order Code	H	A	L	Insert Size	h	Insert	Key
ESB 226	26	1.6	110	2	21	SPB 200	ESW 50L
ESB 326	26	2.45	110	3	21.40	SPB 300	
ESB 332	32	2.45	150	3	25	SPB 300	
ESB 426	26	3.45	110	4	21.40	SPB 400	
ESB 432	32	3.45	150	4	25	SPB 400	
ESB 532	32	4	150	5	25	SPB 500	



● Stock item

○ Non Stock item

△ Special order

Engineered for Excellence.

#EuroloyExcellence



### Italy Office



Via Leonardo Da Vinci, 4 – 20054  
Milano MI ITALIA



(+39) 0282398309



info@euroloy.com

### Turkey Office



Üsküdar Cad. YEDPA No:1  
Ataşehir -İstanbul -TÜRKİYE



(+90) 850 933 3408



euroloytr@euroloy.com



euroloytools



Euroloy Cutting Tools